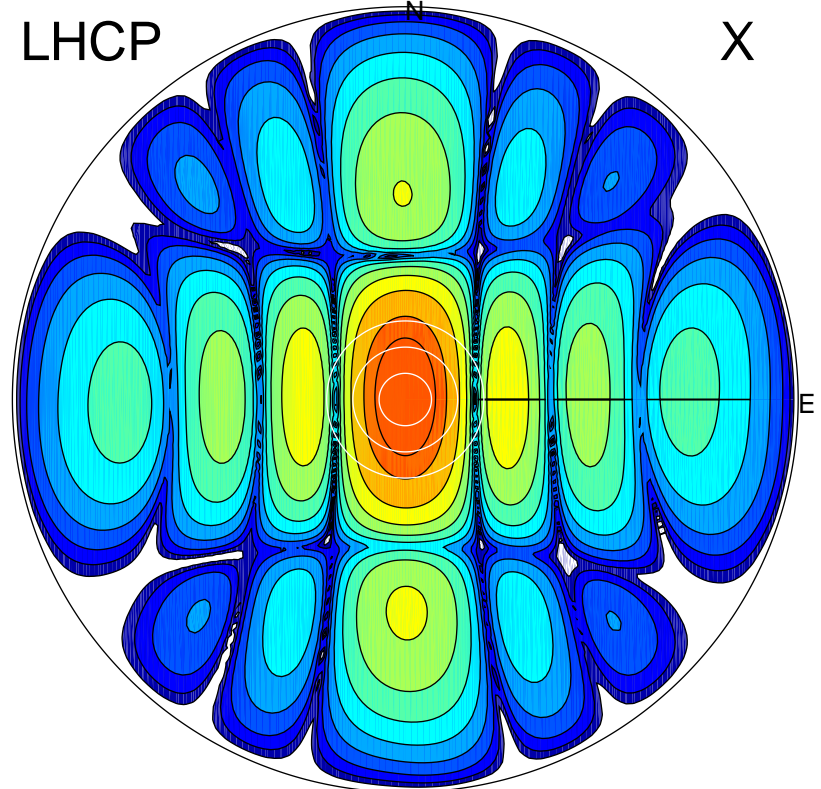


2018-11-27 09:10:00 A2 4.04000000 MHz 421.0 kW

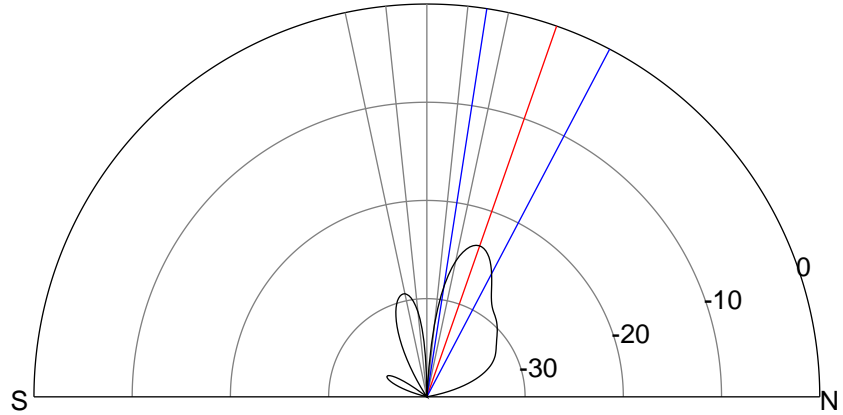
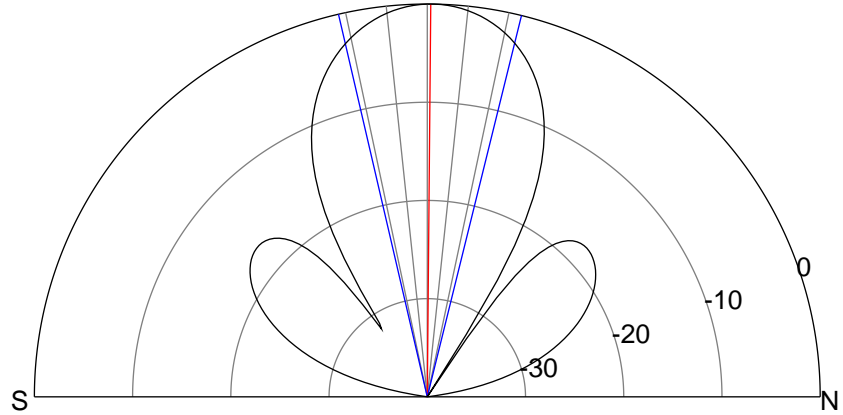
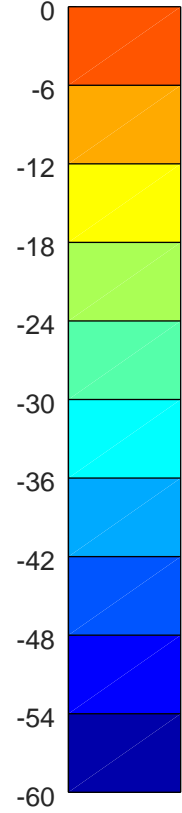
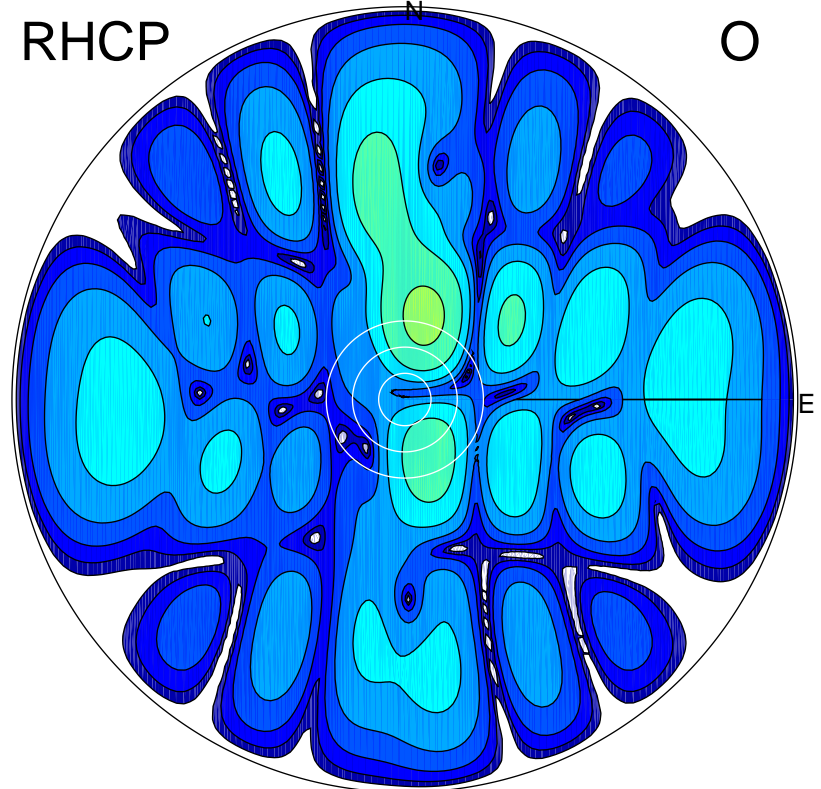
LHCP

X



RHCP

O



ERP 39.6 MW

Peak gain 19.7 dBi at Az 14 Zen 1
RHCP gain -23.1 dBi
N-S peak 19.7 dBi at Zen 0.5
N-S -3 dB beamwidth 26.9 deg.

ERP 0.2 MW

Peak gain -2.5 dBi at Az 14 Zen 19
LHCP gain 13.0 dBi
N-S peak -4.0 dBi at Zen 19.3
N-S -3 dB beamwidth 18.9 deg.