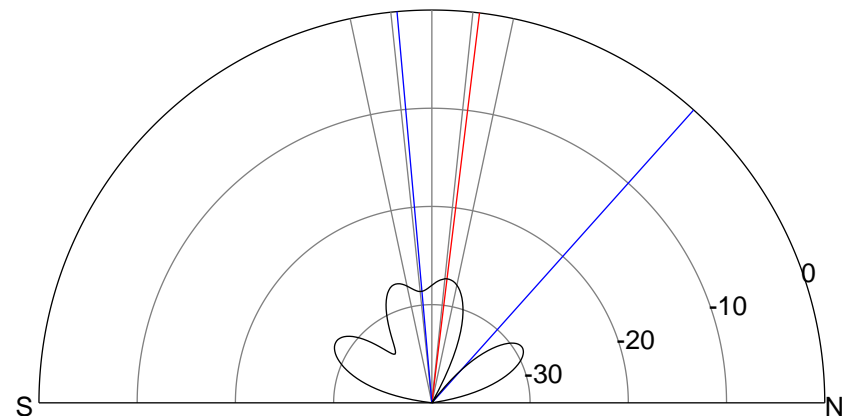
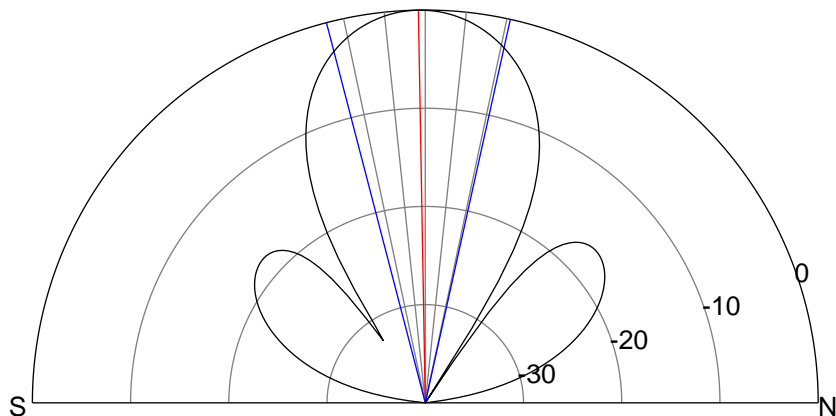
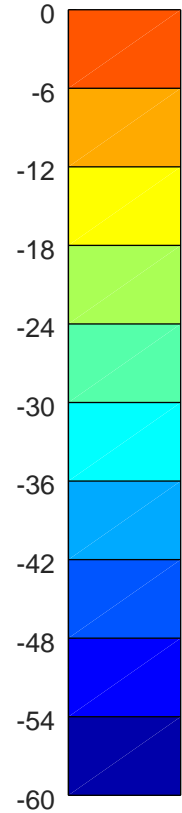
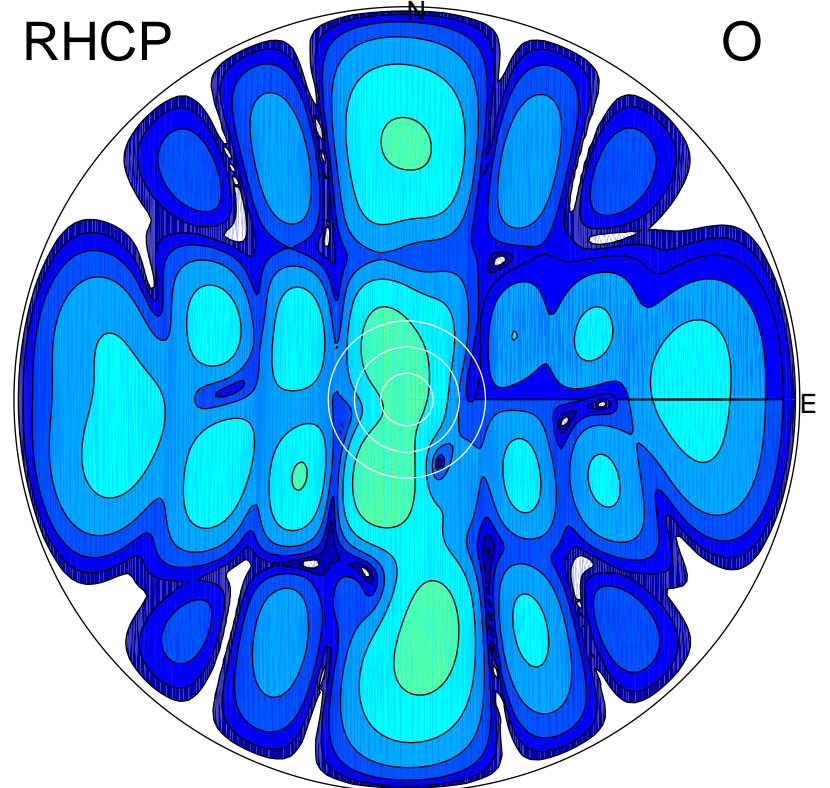
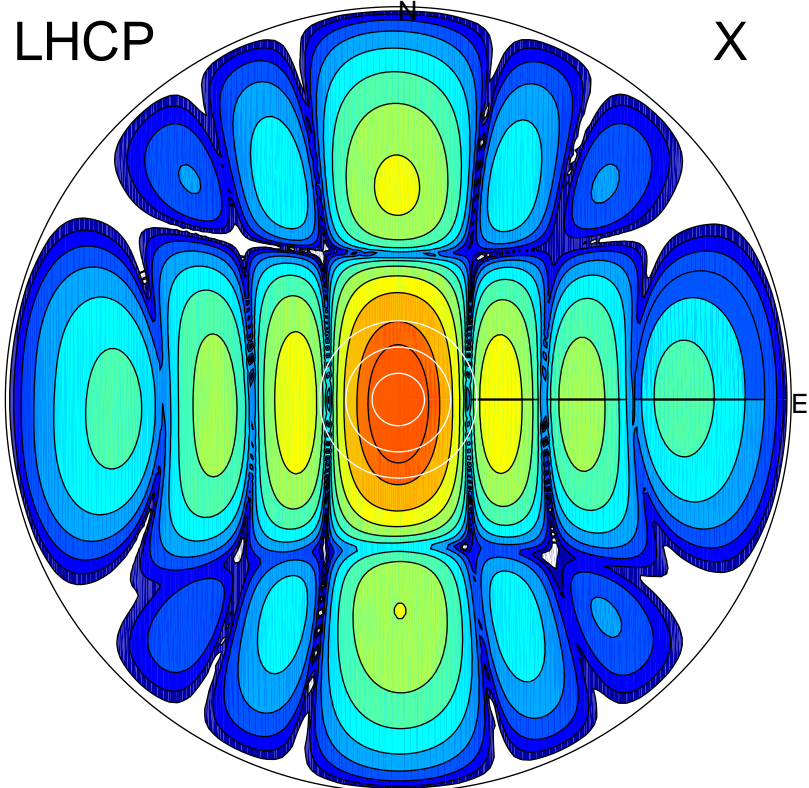


2018-11-27 09:10:00 A2 4.03198300 MHz 422.0 kW



ERP 39.4 MW

Peak gain 19.7 dBi at Az 167 Zen 1
RHCP gain -8.5 dBi
N-S peak 19.7 dBi at Zen -1.0
N-S -3 dB beamwidth 27.1 deg.

ERP 0.1 MW

Peak gain -4.8 dBi at Az 197 Zen 18
LHCP gain 13.7 dBi
N-S peak -7.6 dBi at Zen 7.0
N-S -3 dB beamwidth 46.9 deg.