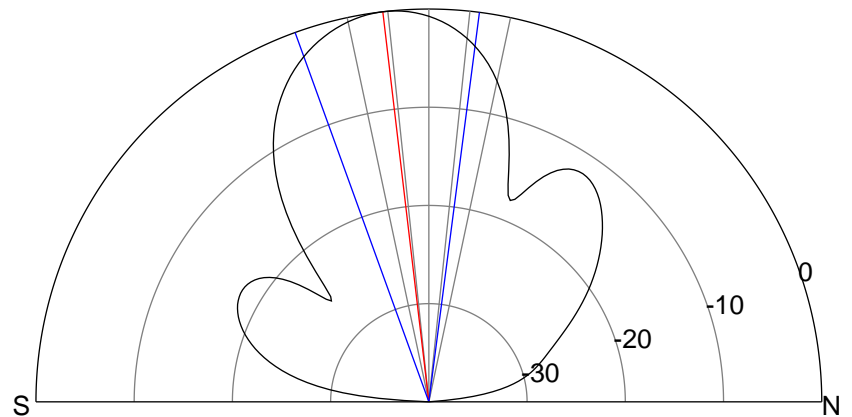
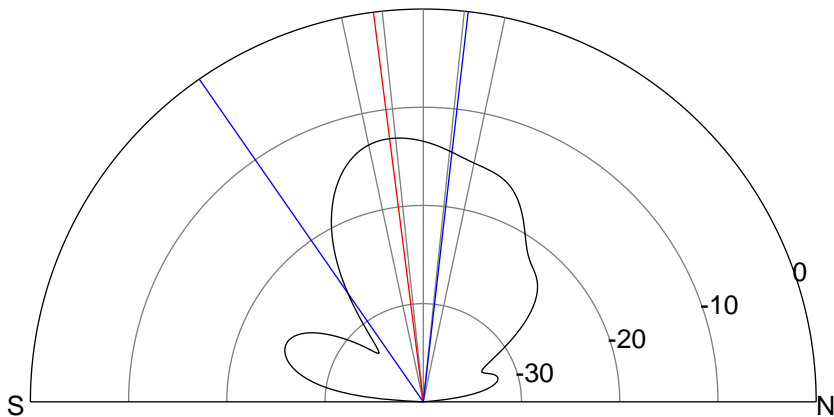
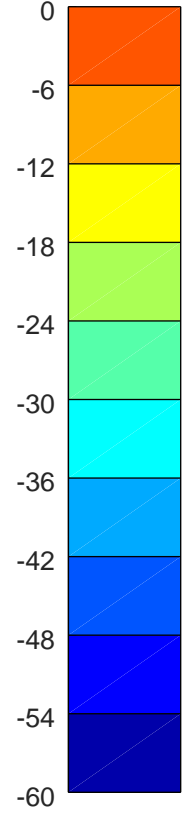
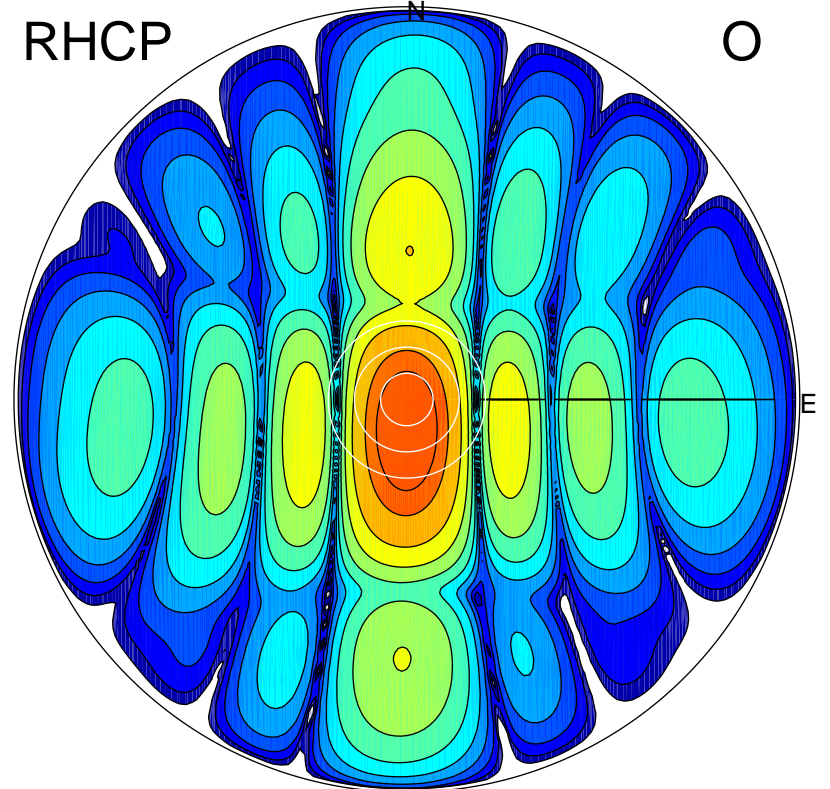
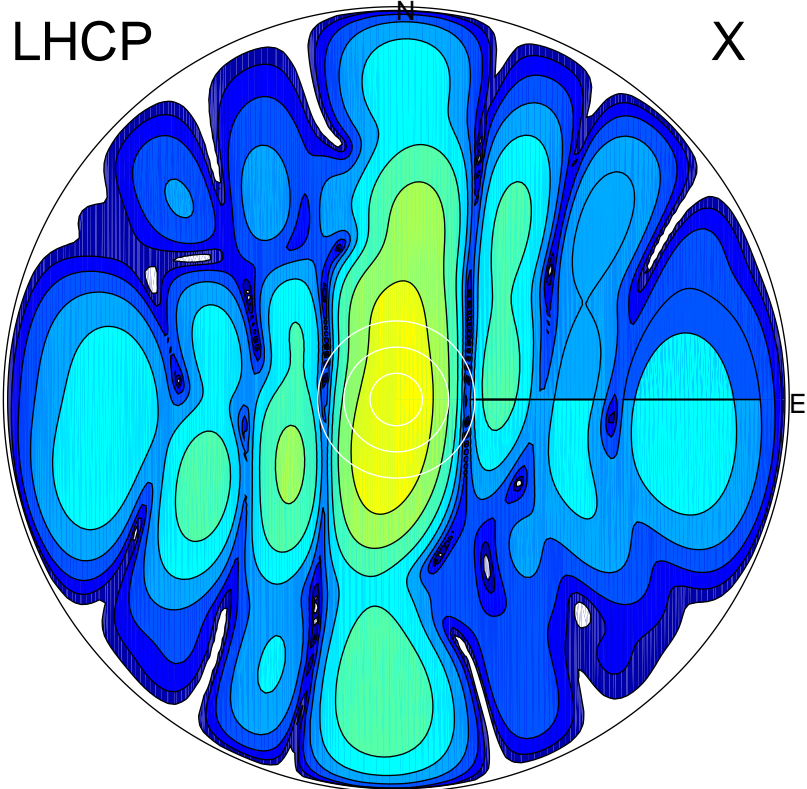


2018-11-26 09:30:00 A2 4.04000000 MHz 310.0 kW



ERP 1.3 MW

Peak gain 6.4 dBi at Az 190 Zen 9
RHCP gain 19.0 dBi
N-S peak 6.3 dBi at Zen -7.3
N-S -3 dB beamwidth 41.3 deg.

ERP 26.0 MW

Peak gain 19.2 dBi at Az 179 Zen 7
LHCP gain 6.2 dBi
N-S peak 19.2 dBi at Zen -6.7
N-S -3 dB beamwidth 27.3 deg.