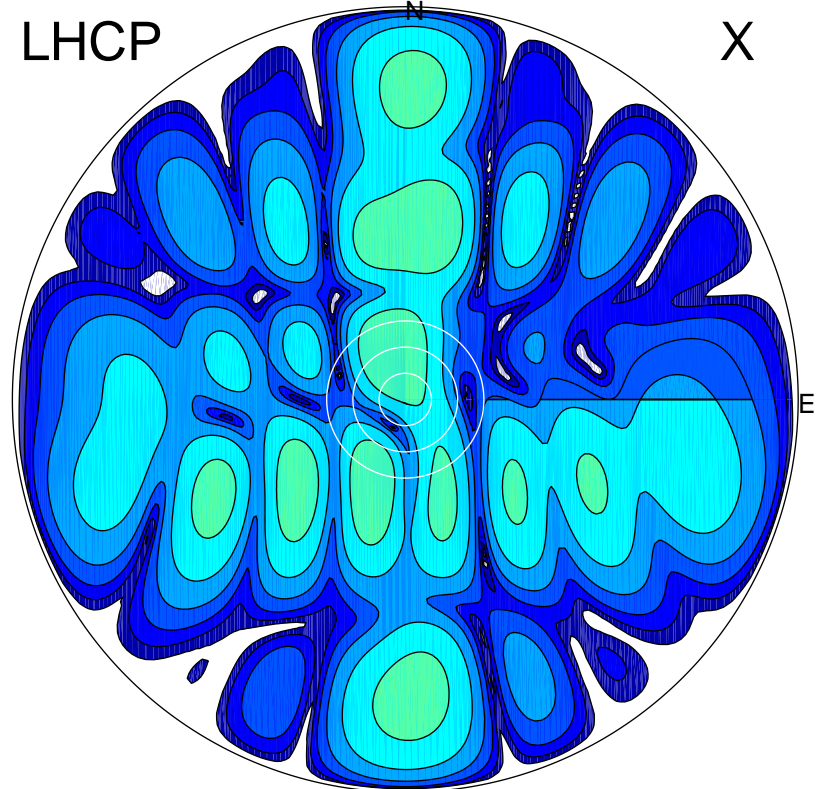


2018-11-23 13:05:29 A2 4.10000000 MHz 463.0 kW

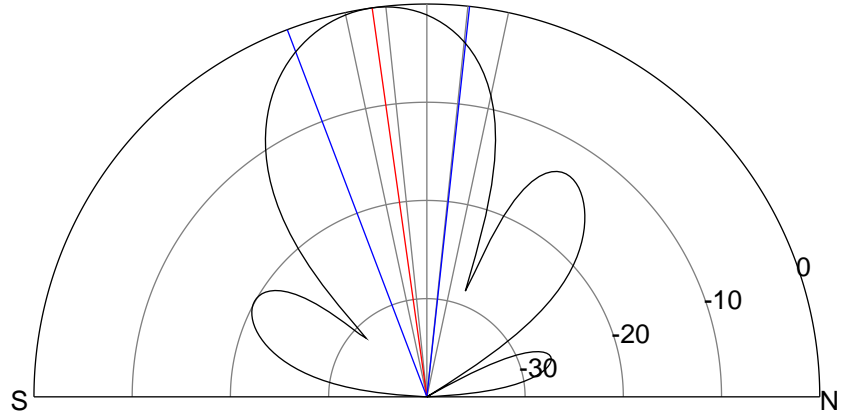
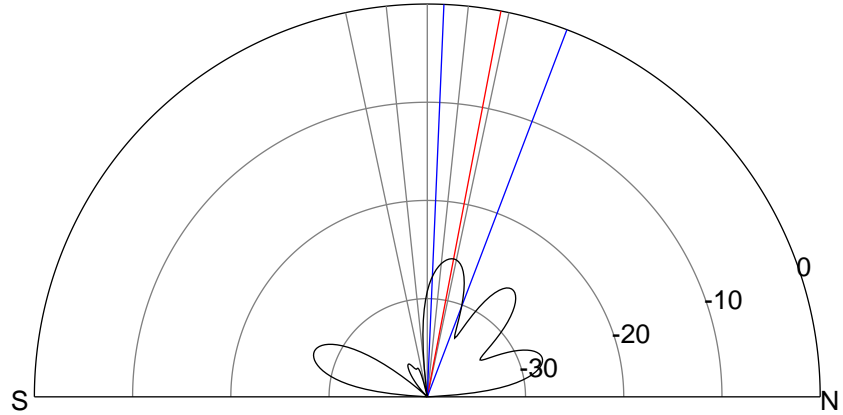
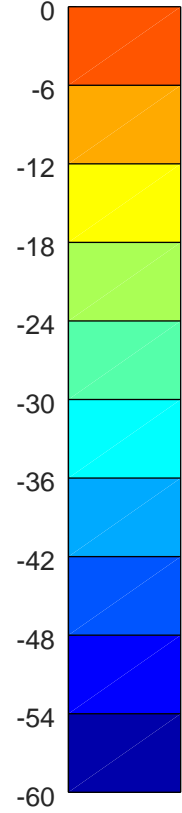
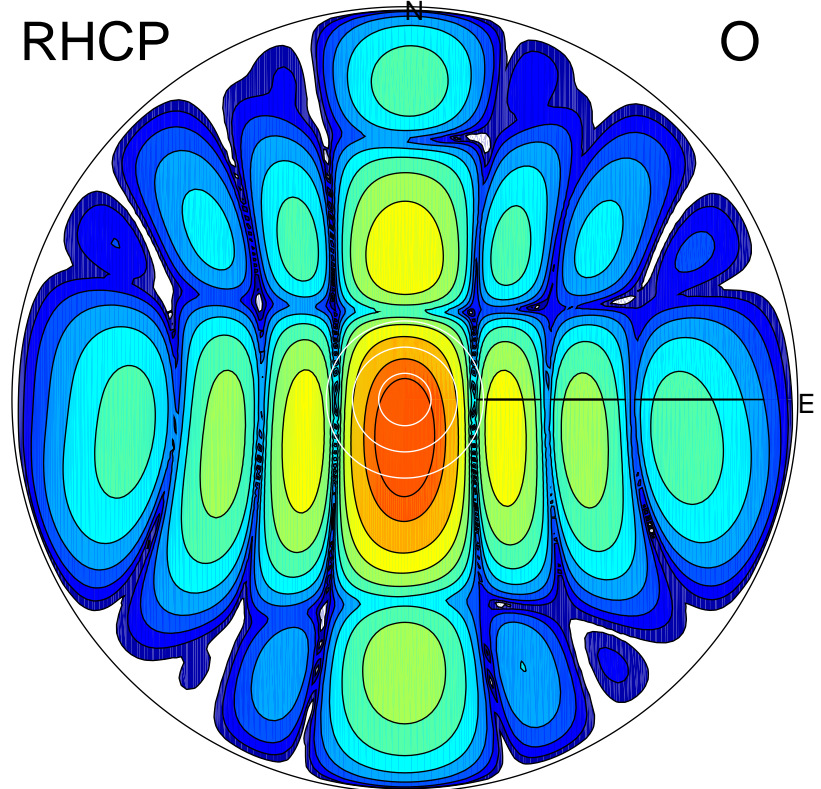
LHCP

X



RHCP

O



### ERP 0.1 MW

Peak gain -5.2 dBi at Az 345 Zen 12  
RHCP gain 11.0 dBi  
N-S peak -6.0 dBi at Zen 10.8  
N-S -3 dB beamwidth 18.4 deg.

### ERP 43.5 MW

Peak gain 19.7 dBi at Az 180 Zen 8  
LHCP gain -22.1 dBi  
N-S peak 19.7 dBi at Zen -8.0  
N-S -3 dB beamwidth 27.1 deg.