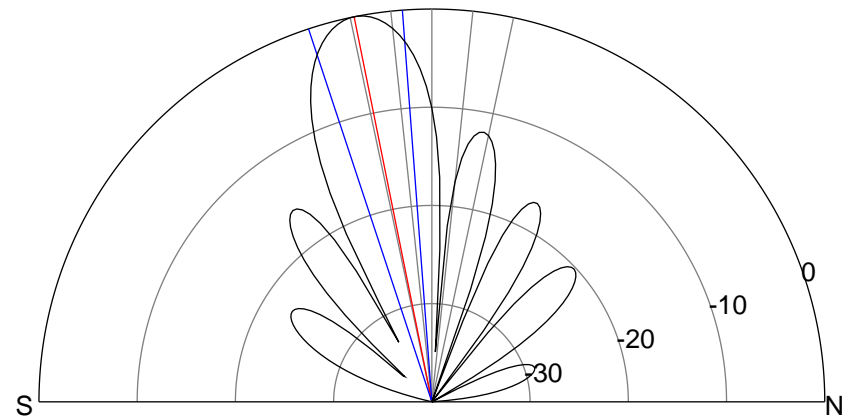
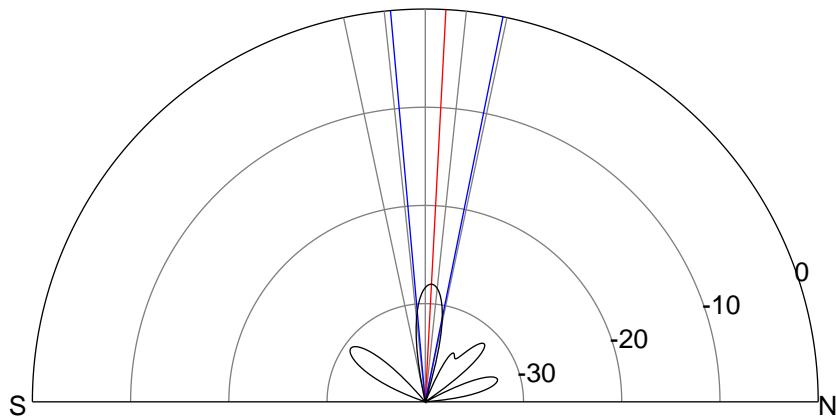
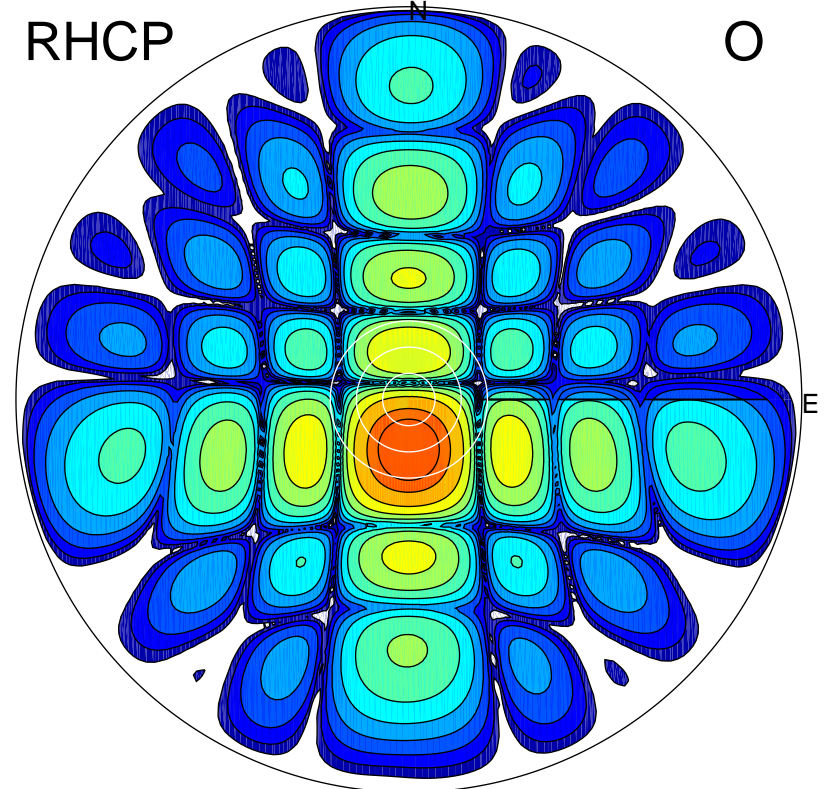
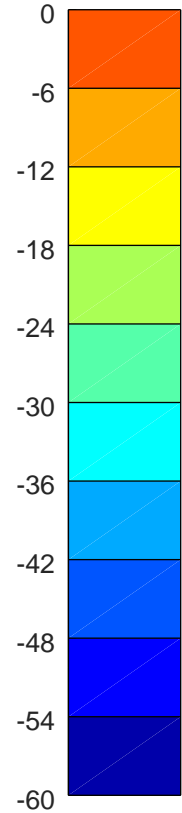
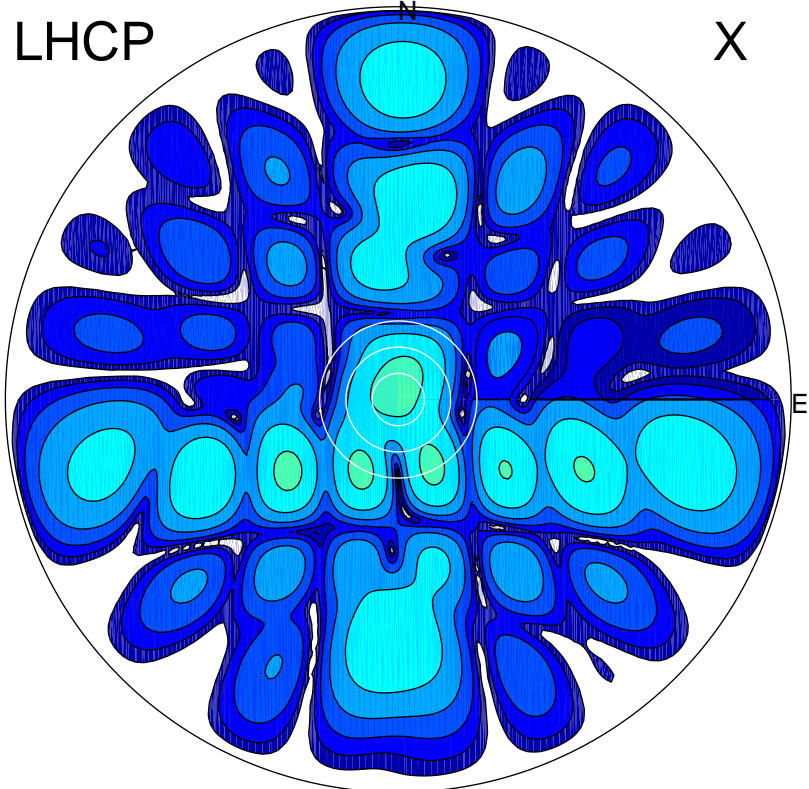


2018-11-23 10:25:57 A2 4.04000000 MHz 878.0 kW



ERP 0.2 MW

Peak gain -5.6 dBi at Az 352 Zen 3
RHCP gain -1.7 dBi
N-S peak -5.6 dBi at Zen 3.0
N-S -3 dB beamwidth 16.5 deg.

ERP 152.7 MW

Peak gain 22.4 dBi at Az 181 Zen 11
LHCP gain -15.4 dBi
N-S peak 22.4 dBi at Zen -11.4
N-S -3 dB beamwidth 14.0 deg.