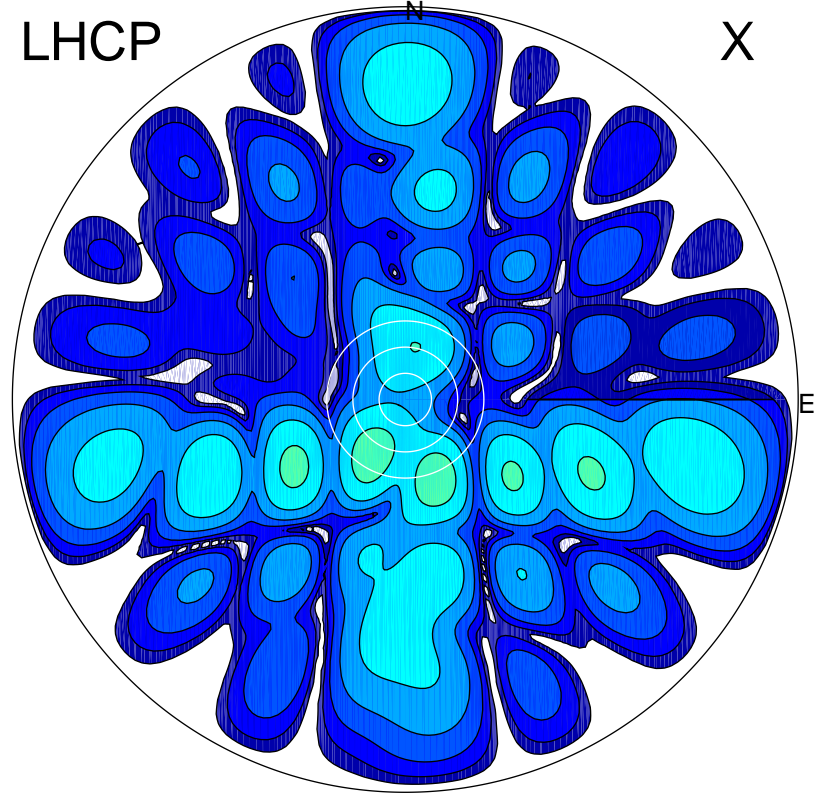


2018-11-23 09:52:02 A2 4.04000000 MHz 888.0 kW

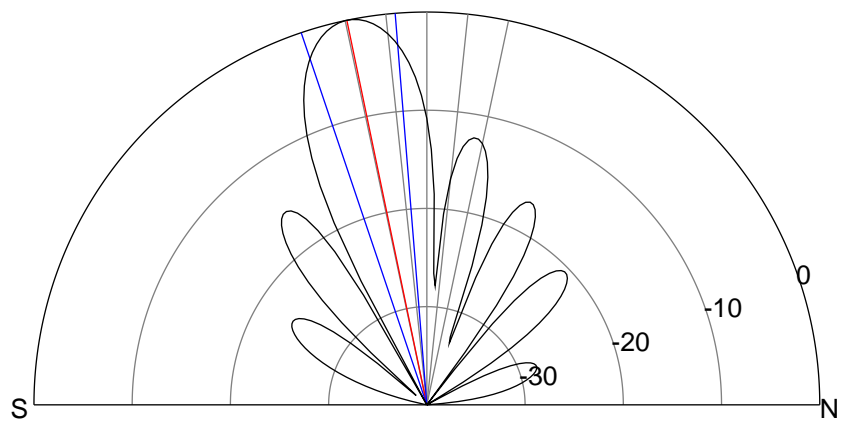
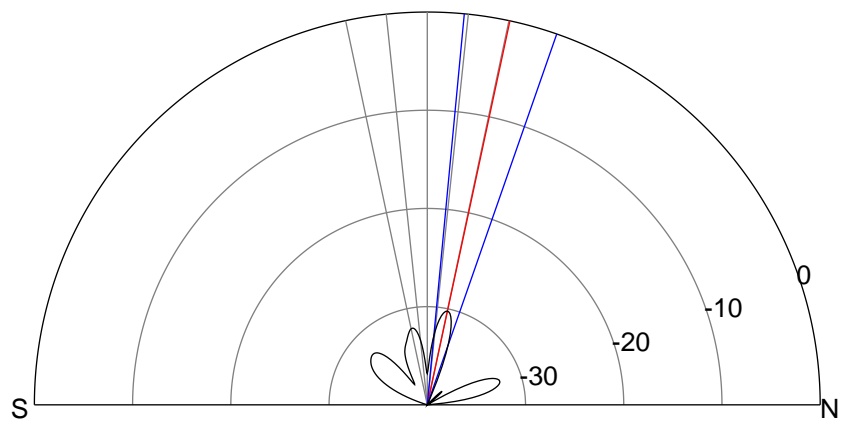
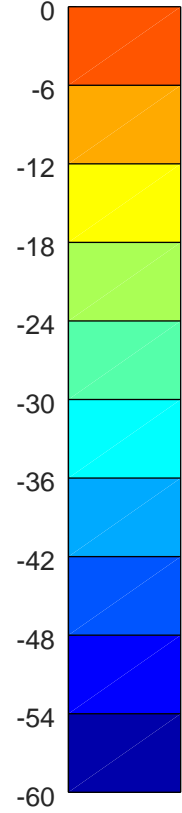
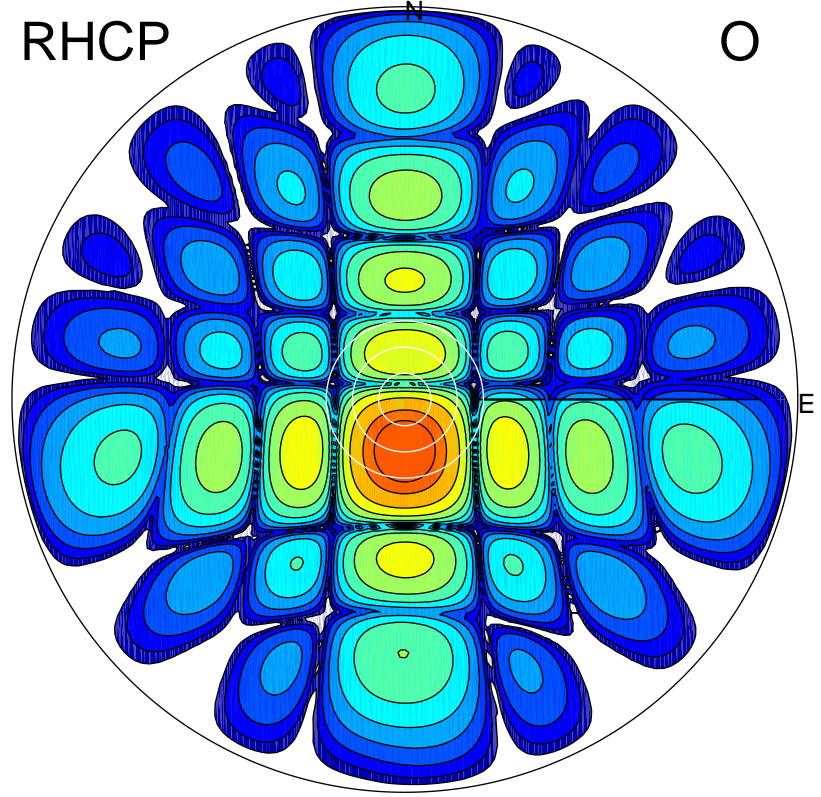
LHCP

X



RHCP

O



ERP 0.3 MW

Peak gain -4.7 dBi at Az 159 Zen 20
RHCP gain 16.5 dBi
N-S peak -7.8 dBi at Zen 12.1
N-S -3 dB beamwidth 13.8 deg.

ERP 154.7 MW

Peak gain 22.4 dBi at Az 180 Zen 12
LHCP gain -9.7 dBi
N-S peak 22.4 dBi at Zen -11.8
N-S -3 dB beamwidth 14.0 deg.