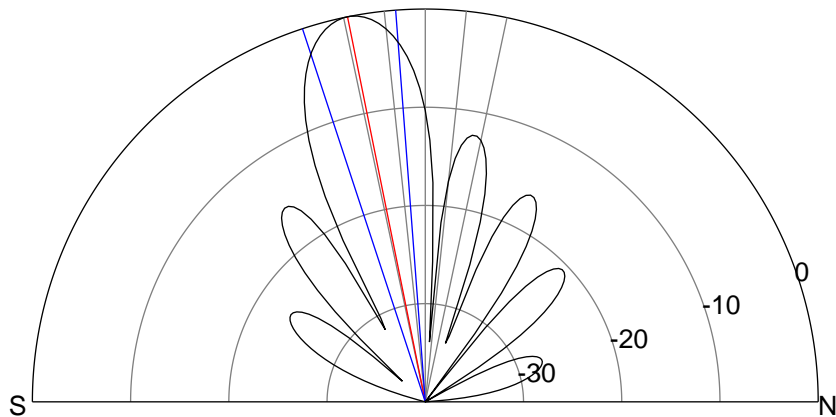
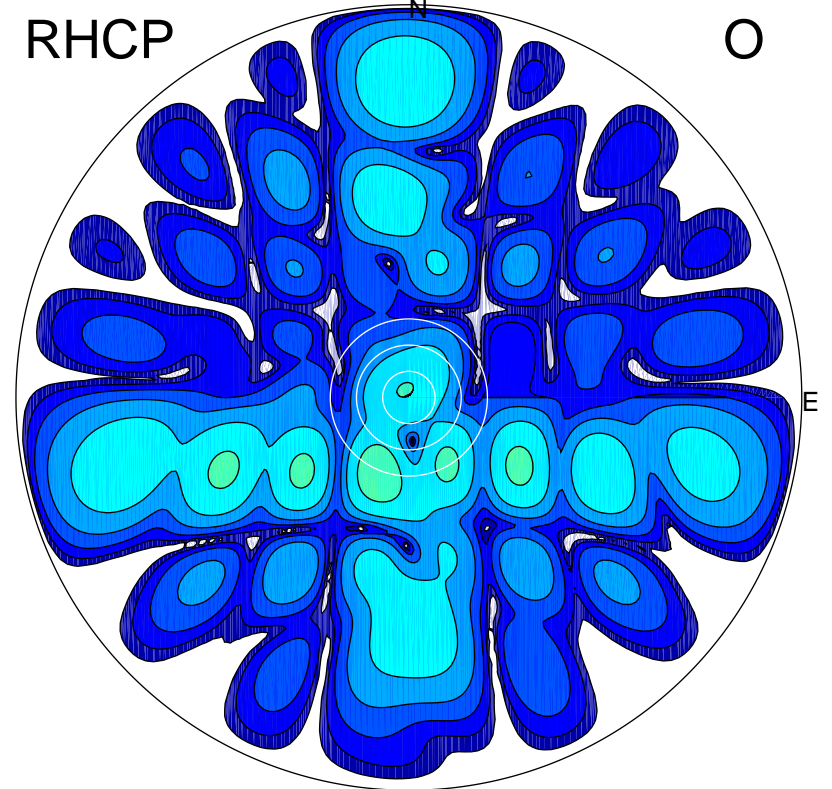
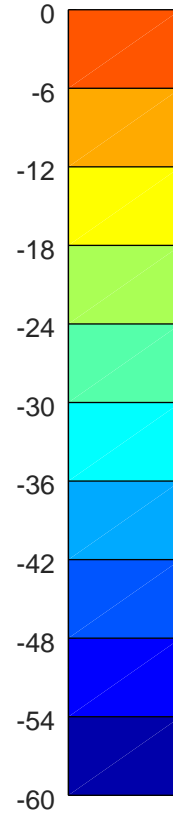
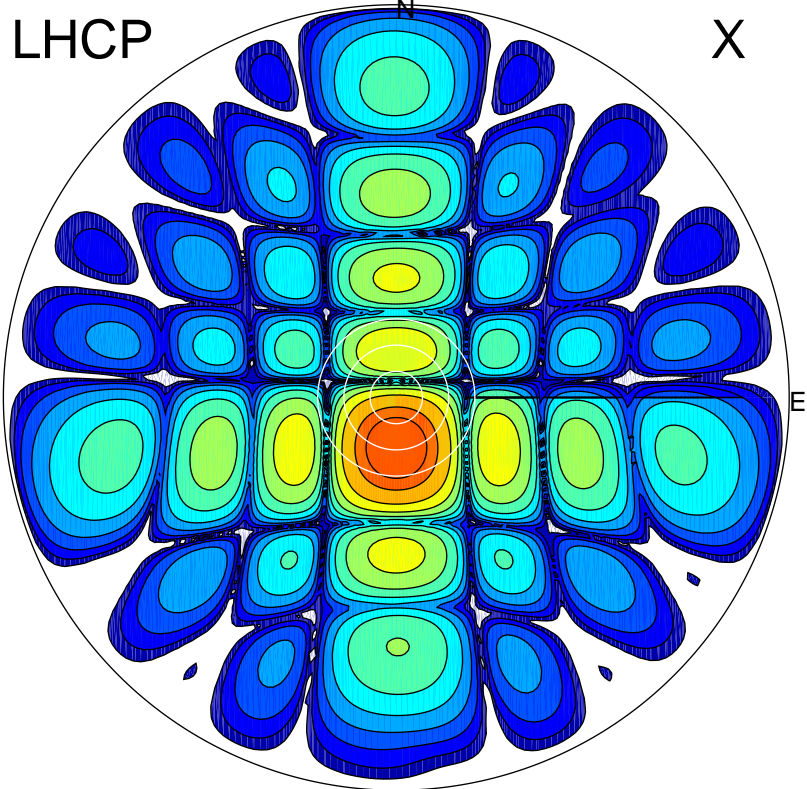
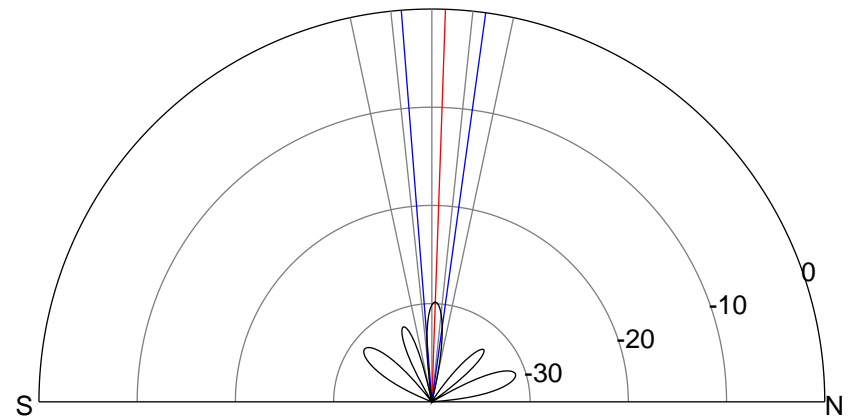


2018-11-23 09:11:02 A2 4.06700000 MHz 905.0 kW



ERP 159.6 MW

Peak gain 22.5 dBi at Az 179 Zen 11
RHCP gain -22.7 dBi
N-S peak 22.5 dBi at Zen -11.4
N-S -3 dB beamwidth 13.9 deg.



ERP 0.3 MW

Peak gain -4.2 dBi at Az 201 Zen 19
LHCP gain 17.3 dBi
N-S peak -7.4 dBi at Zen 2.0
N-S -3 dB beamwidth 12.3 deg.