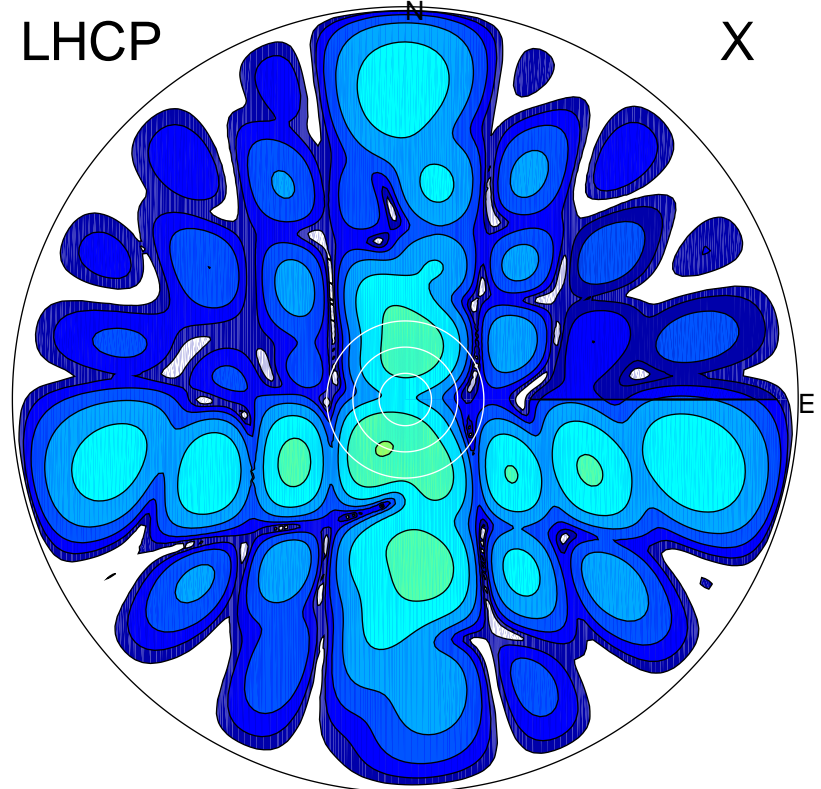


2018-11-22 10:46:57 A2 4.04000000 MHz 866.0 kW

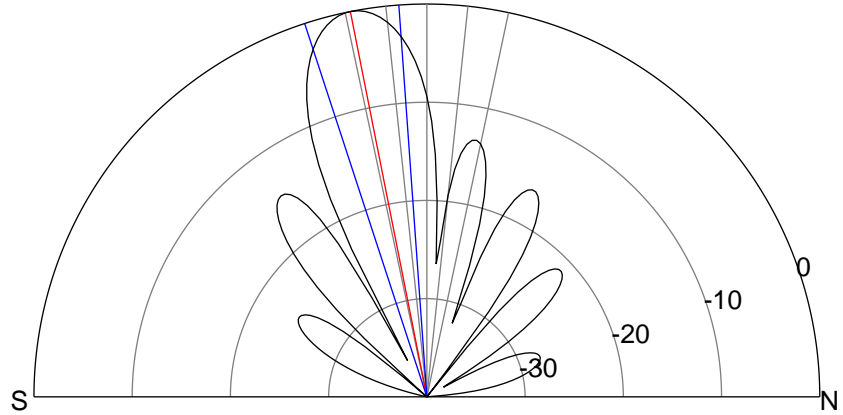
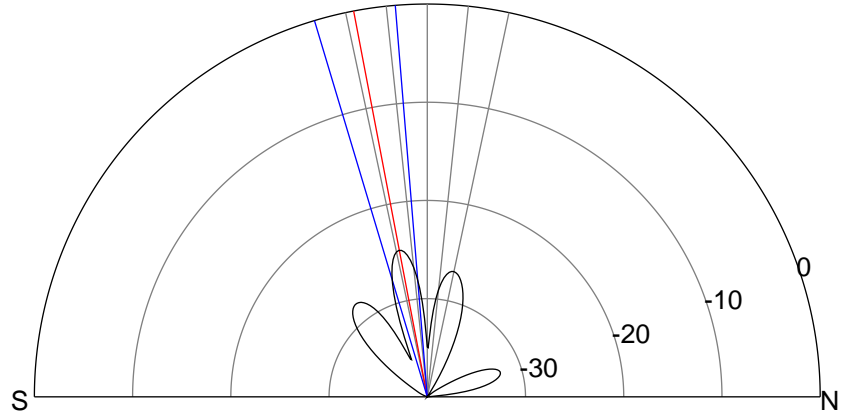
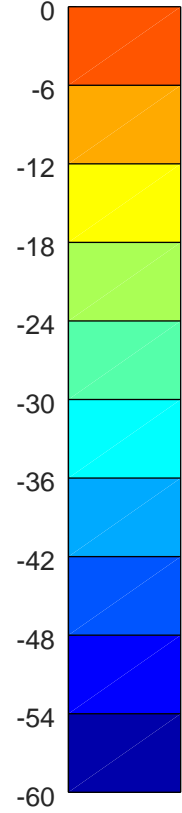
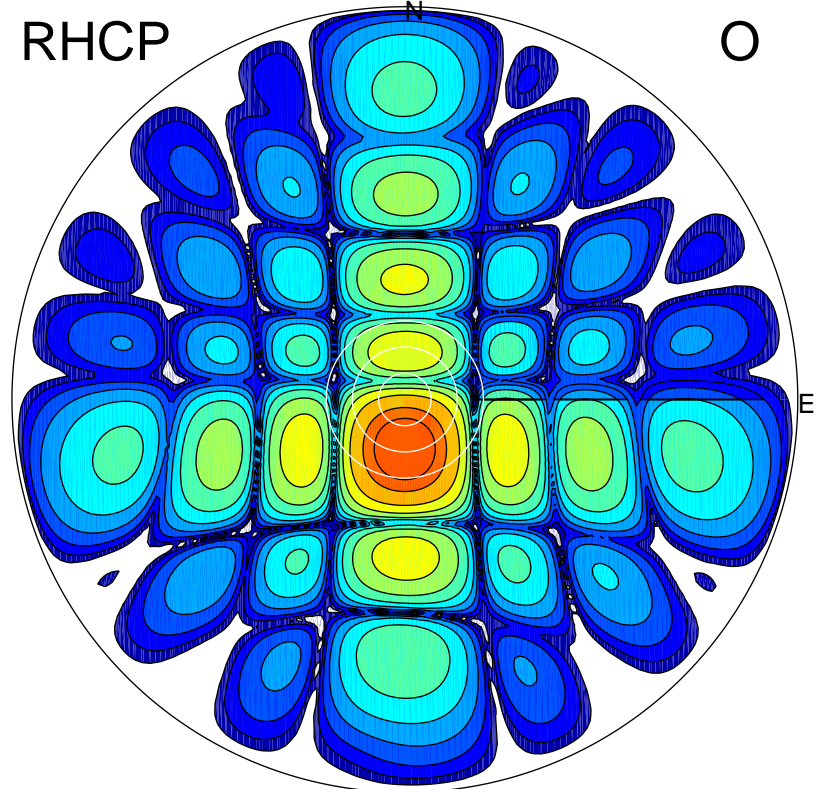
LHCP

X



RHCP

O



### ERP 0.6 MW

Peak gain -1.4 dBi at Az 202 Zen 12  
RHCP gain 21.2 dBi  
N-S peak -2.4 dBi at Zen -10.8  
N-S -3 dB beamwidth 12.0 deg.

### ERP 150.1 MW

Peak gain 22.4 dBi at Az 179 Zen 11  
LHCP gain -2.5 dBi  
N-S peak 22.4 dBi at Zen -11.2  
N-S -3 dB beamwidth 14.0 deg.