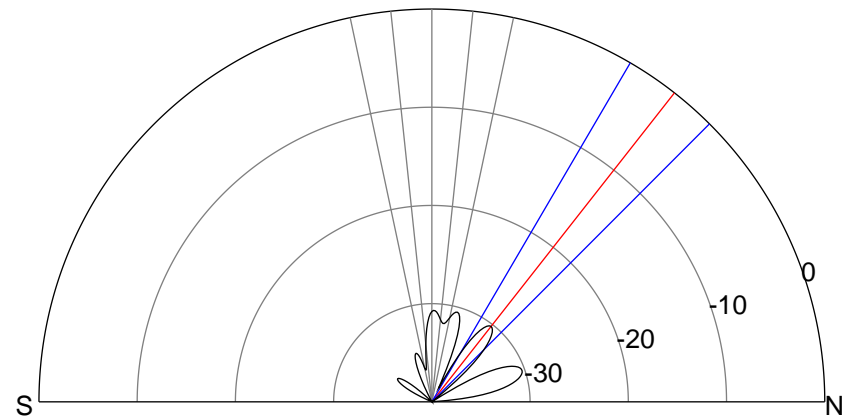
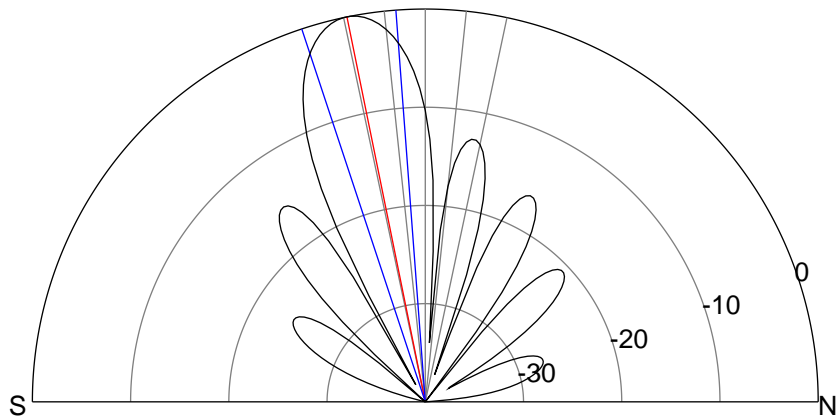
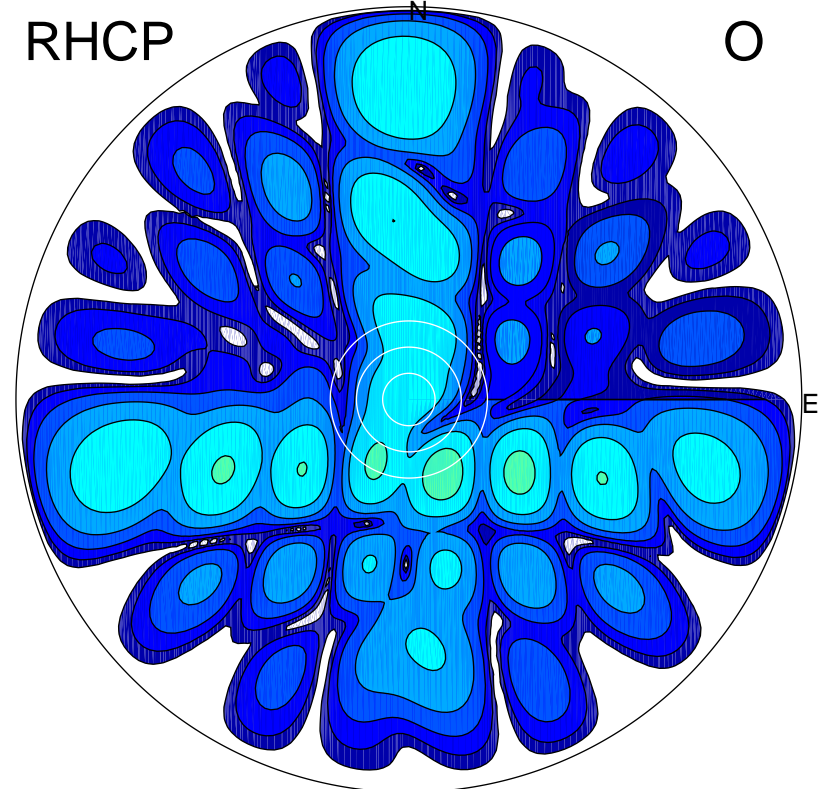
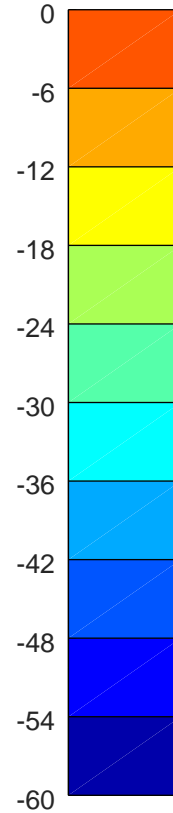
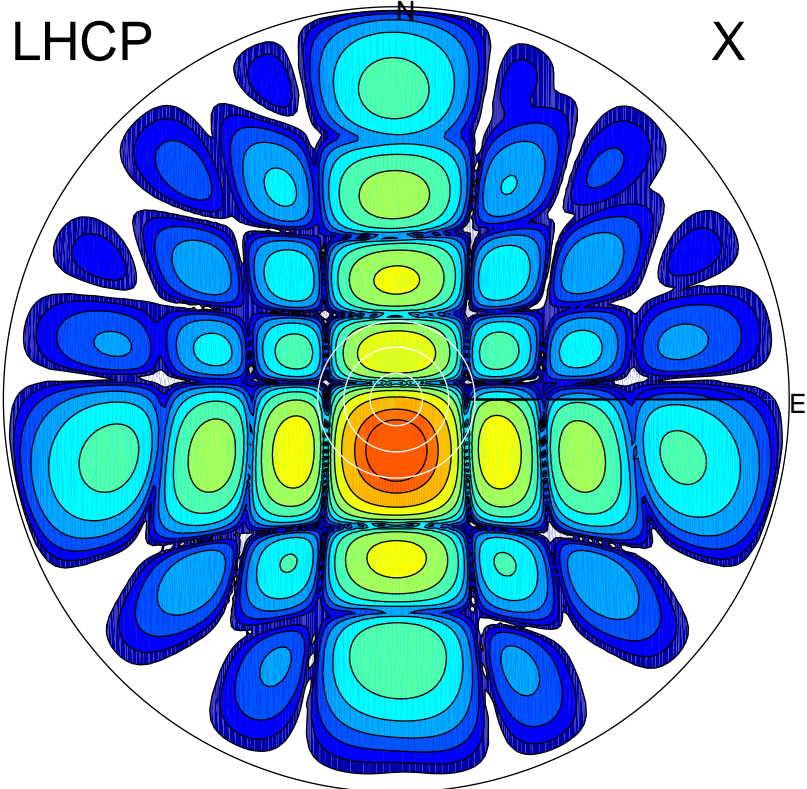


2018-11-22 10:30:57 A2 4.04000000 MHz 867.0 kW



ERP 150.7 MW

Peak gain 22.4 dBi at Az 179 Zen 11
RHCP gain -14.6 dBi
N-S peak 22.4 dBi at Zen -11.5
N-S -3 dB beamwidth 14.0 deg.

ERP 0.3 MW

Peak gain -4.7 dBi at Az 155 Zen 19
LHCP gain 16.7 dBi
N-S peak -7.8 dBi at Zen 38.1
N-S -3 dB beamwidth 14.6 deg.