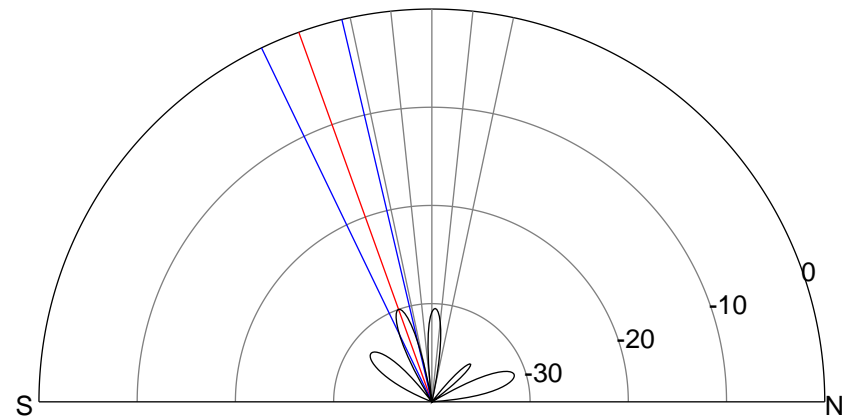
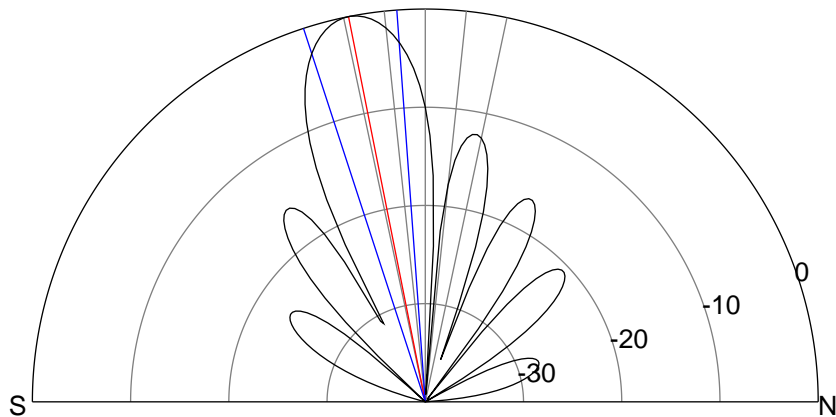
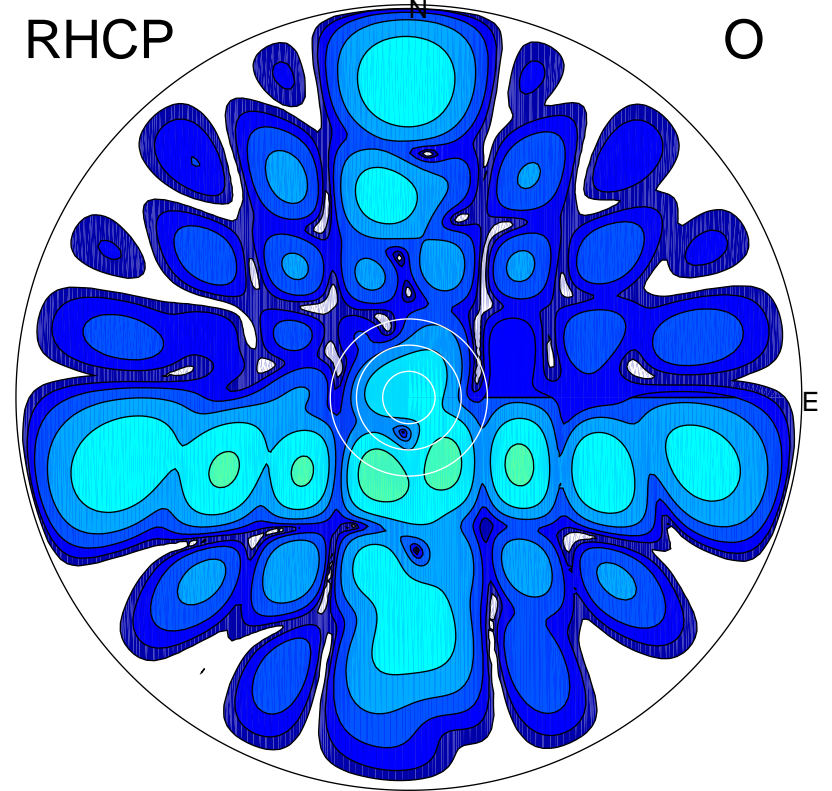
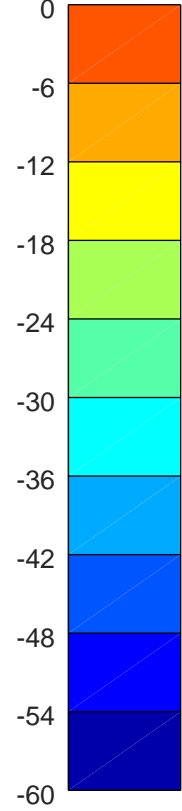
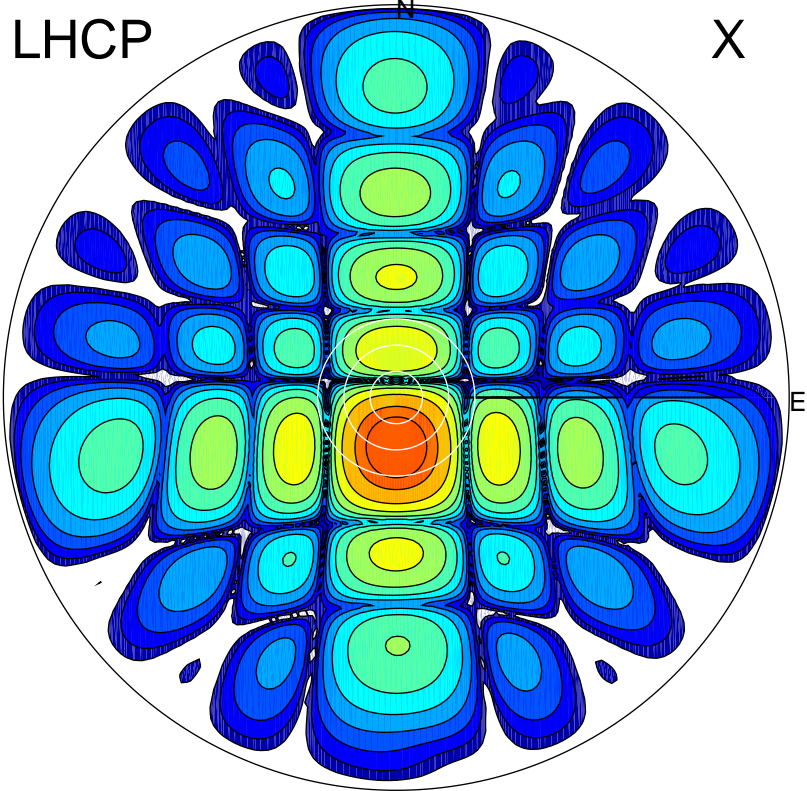


2018-11-22 09:19:57 A2 4.06700000 MHz 879.0 kW



ERP 155.3 MW

Peak gain 22.5 dBi at Az 180 Zen 11
RHCP gain -15.6 dBi
N-S peak 22.5 dBi at Zen -11.3
N-S -3 dB beamwidth 13.9 deg.

ERP 0.3 MW

Peak gain -4.3 dBi at Az 200 Zen 19
LHCP gain 17.4 dBi
N-S peak -7.5 dBi at Zen -19.8
N-S -3 dB beamwidth 12.5 deg.