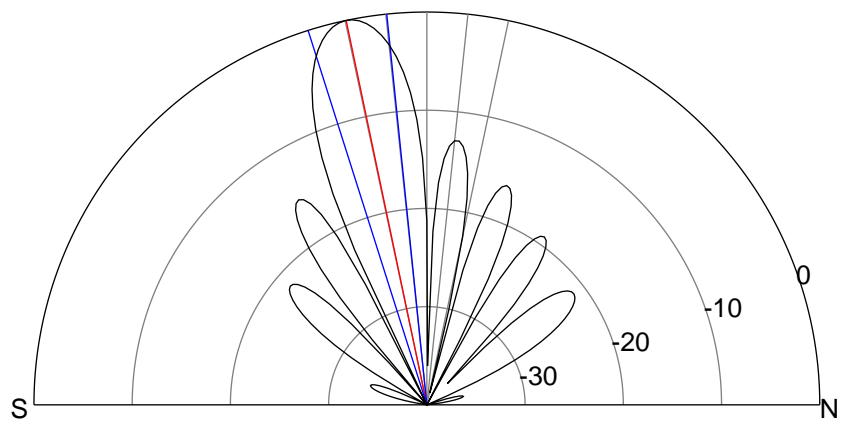
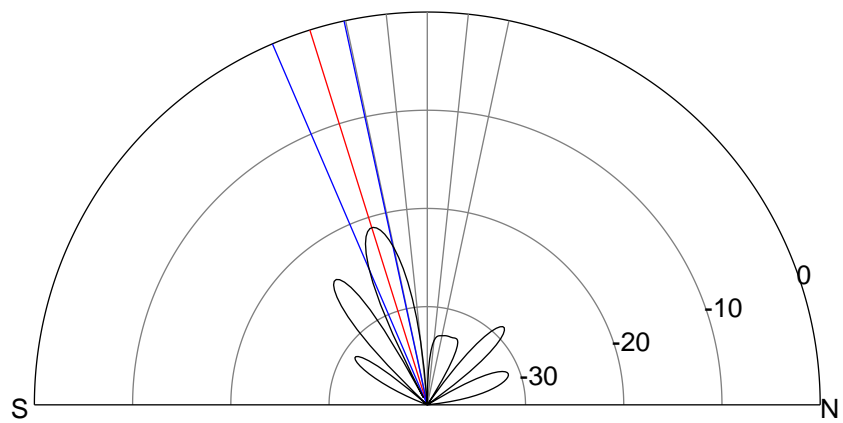
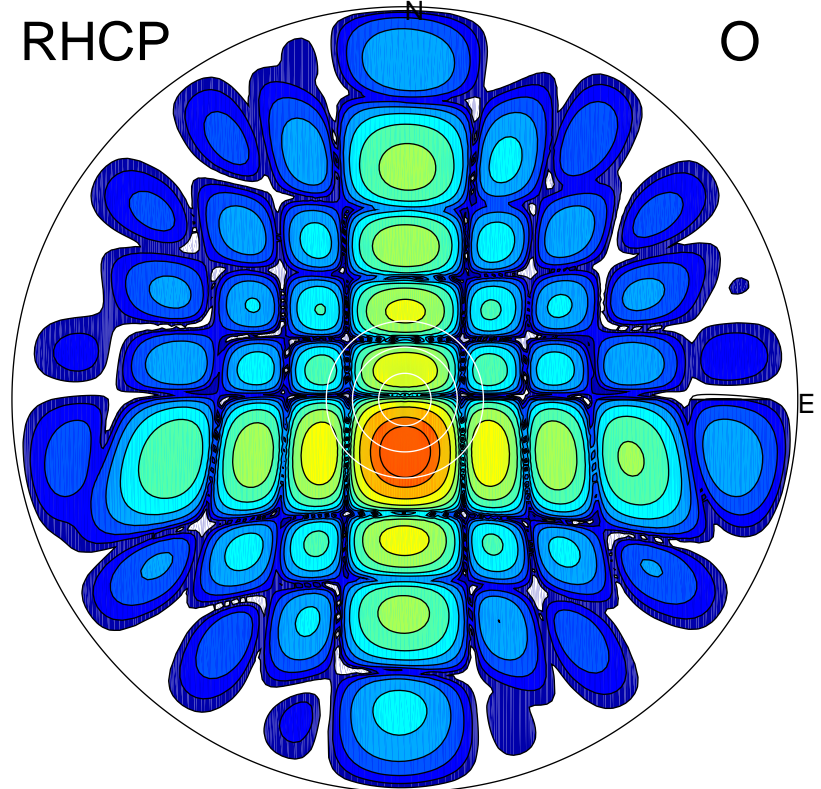
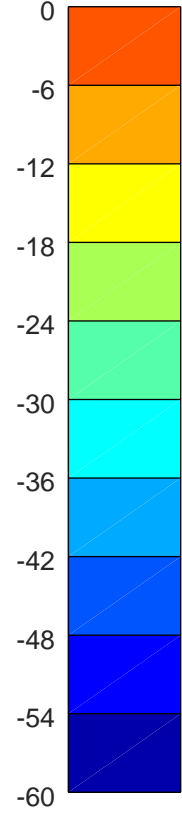
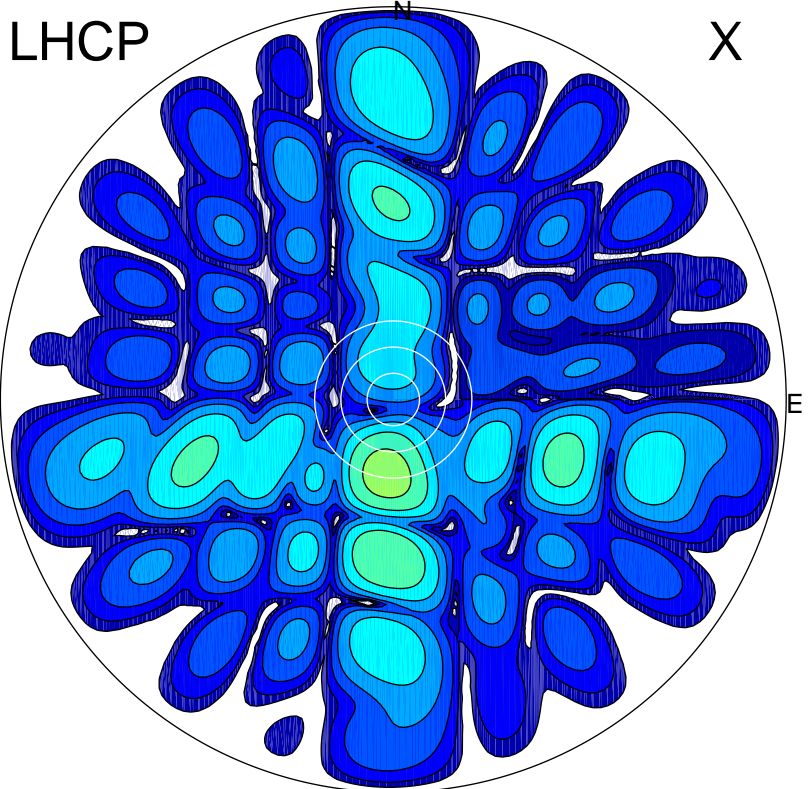


2018-10-18 12:36:00 A2 4.91280000 MHz 877.0 kW



### ERP 1.8 MW

Peak gain 3.0 dBi at Az 185 Zen 17  
RHCP gain 21.6 dBi  
N-S peak 2.8 dBi at Zen -17.4  
N-S -3 dB beamwidth 11.0 deg.

### ERP 214.0 MW

Peak gain 23.9 dBi at Az 179 Zen 12  
LHCP gain 0.1 dBi  
N-S peak 23.9 dBi at Zen -11.8  
N-S -3 dB beamwidth 11.7 deg.