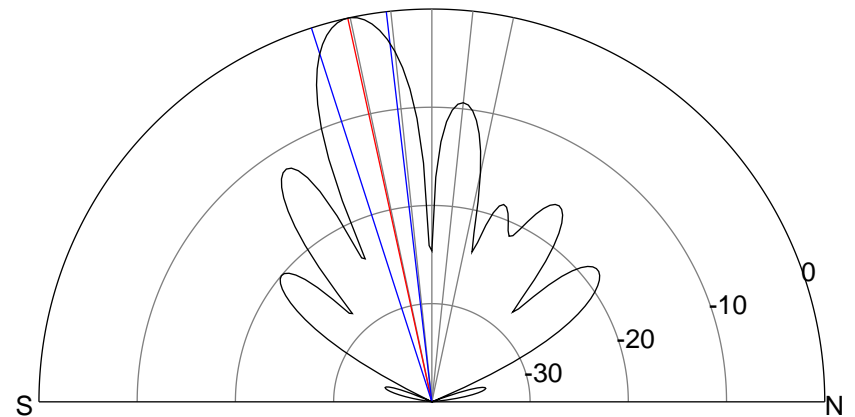
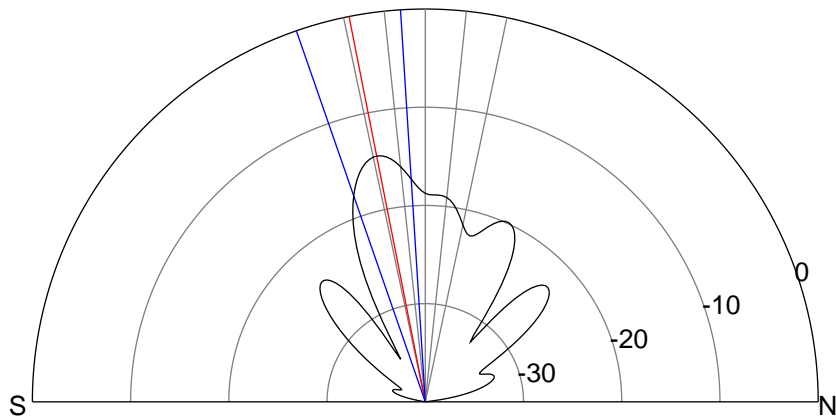
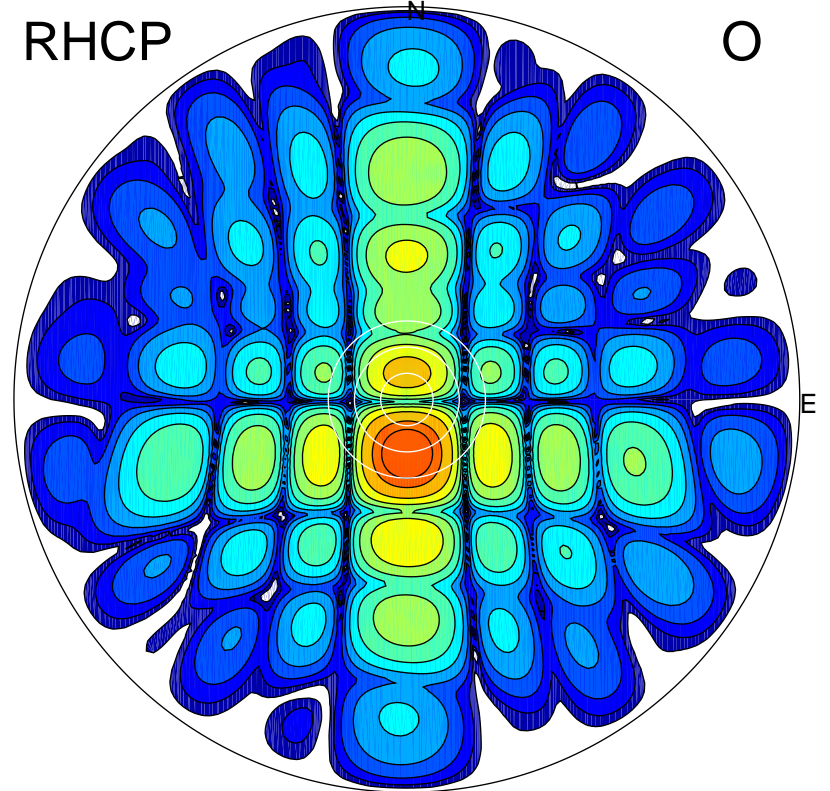
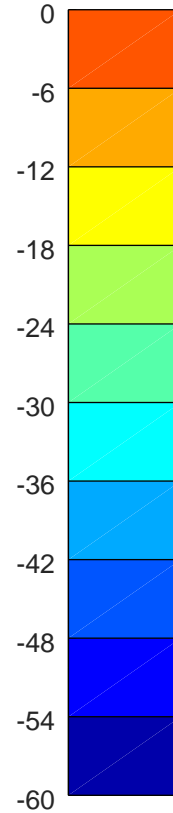
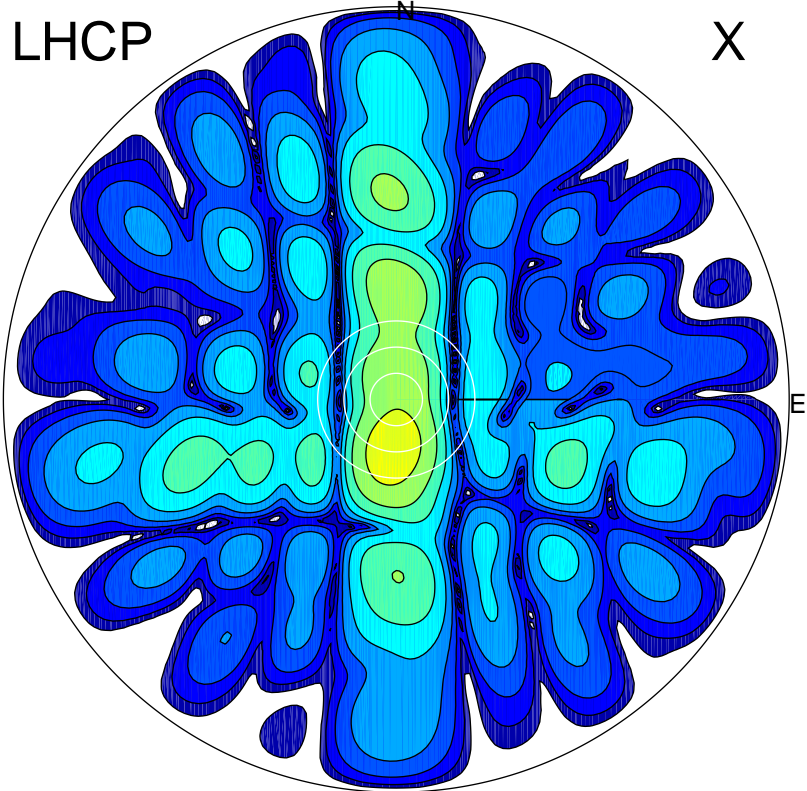


2018-10-18 12:26:00 A2 4.91280000 MHz 746.0 kW



ERP 5.9 MW

Peak gain 9.0 dBi at Az 183 Zen 11
RHCP gain 23.3 dBi
N-S peak 9.0 dBi at Zen -11.2
N-S -3 dB beamwidth 15.5 deg.

ERP 164.8 MW

Peak gain 23.4 dBi at Az 179 Zen 12
LHCP gain 8.9 dBi
N-S peak 23.5 dBi at Zen -12.4
N-S -3 dB beamwidth 11.2 deg.