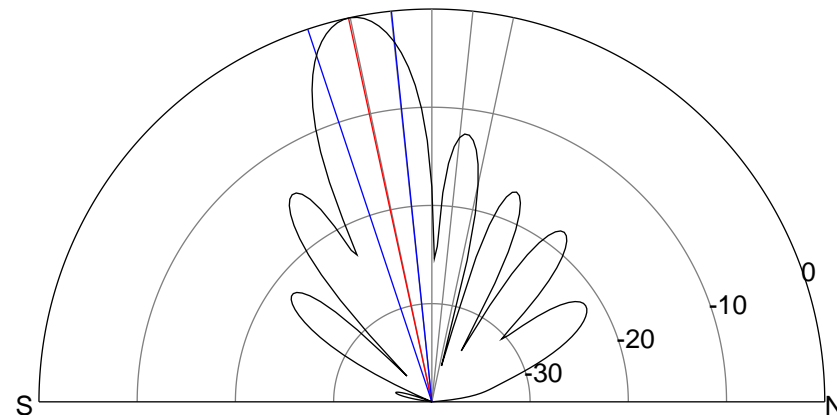
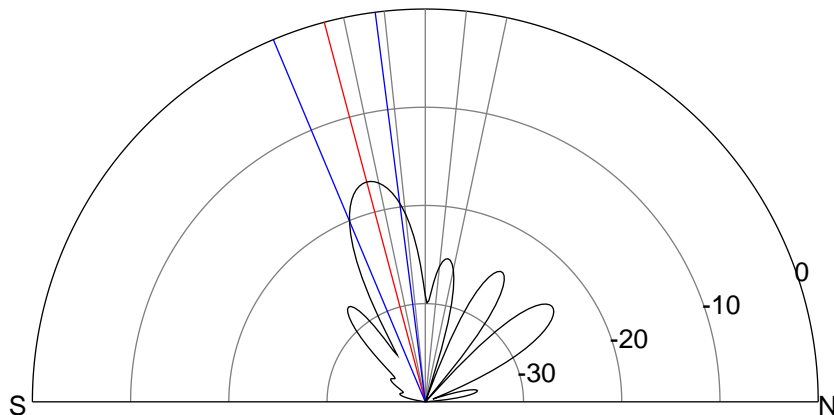
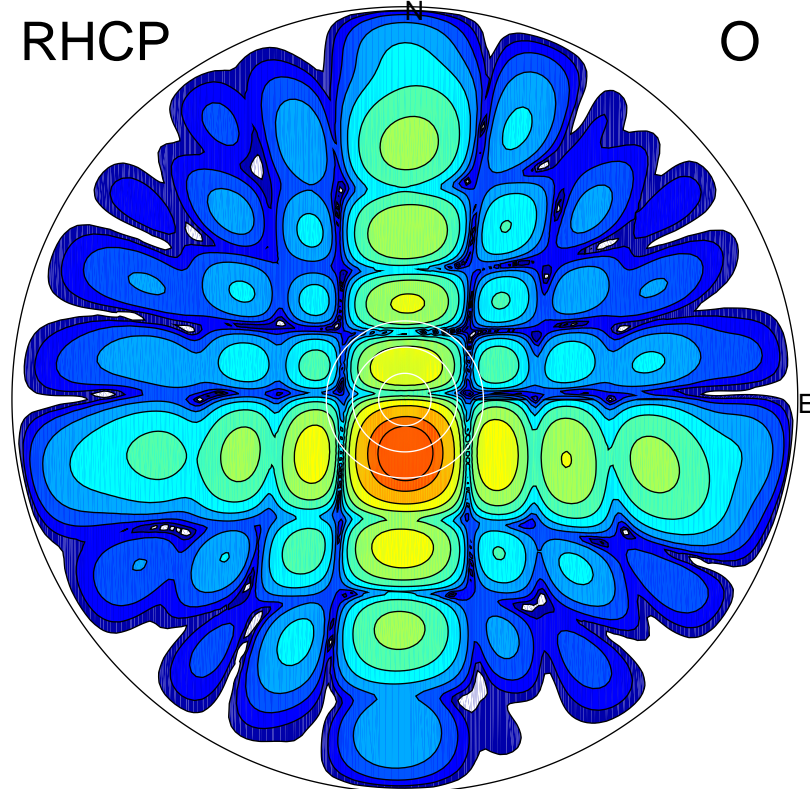
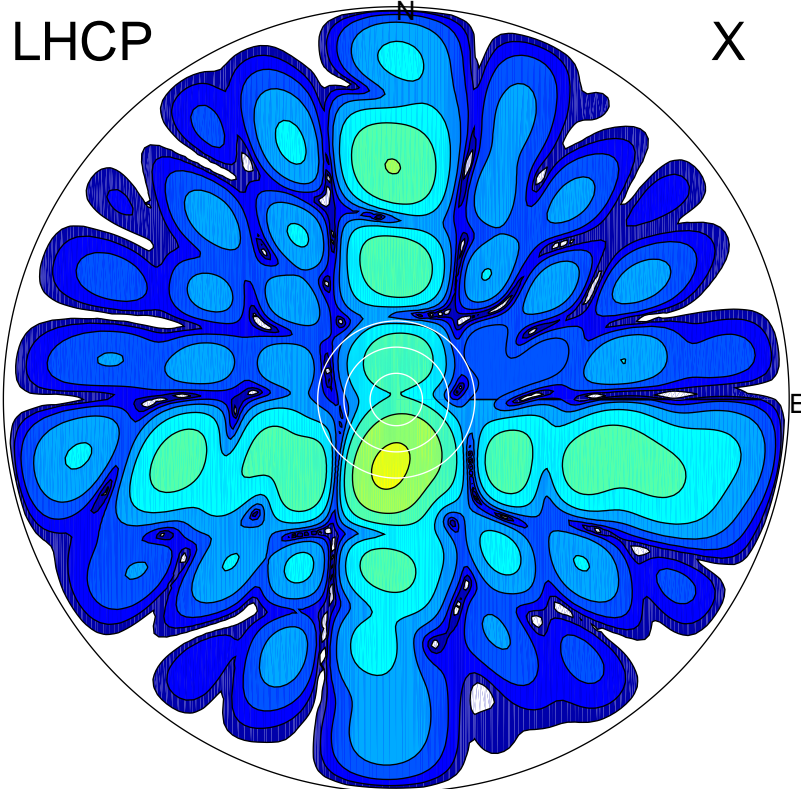


2018-10-17 12:36:00 A2 4.54400000 MHz 889.0 kW



### ERP 3.9 MW

Peak gain 6.4 dBi at Az 186 Zen 16  
RHCP gain 21.9 dBi  
N-S peak 6.3 dBi at Zen -14.9  
N-S -3 dB beamwidth 15.4 deg.

### ERP 181.1 MW

Peak gain 23.1 dBi at Az 179 Zen 12  
LHCP gain 5.9 dBi  
N-S peak 23.1 dBi at Zen -12.3  
N-S -3 dB beamwidth 12.5 deg.