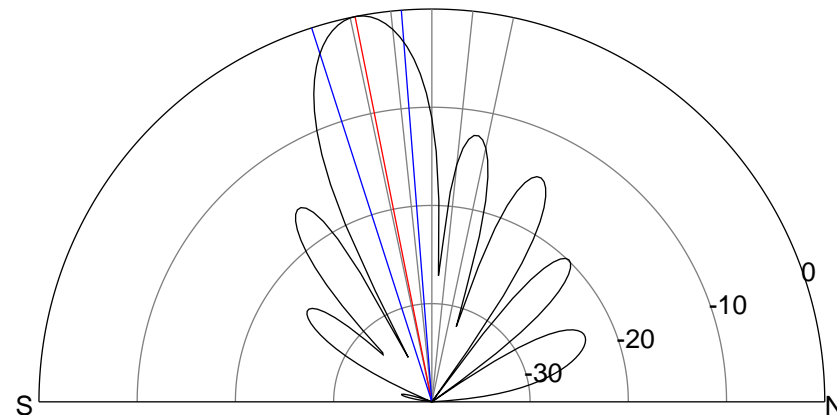
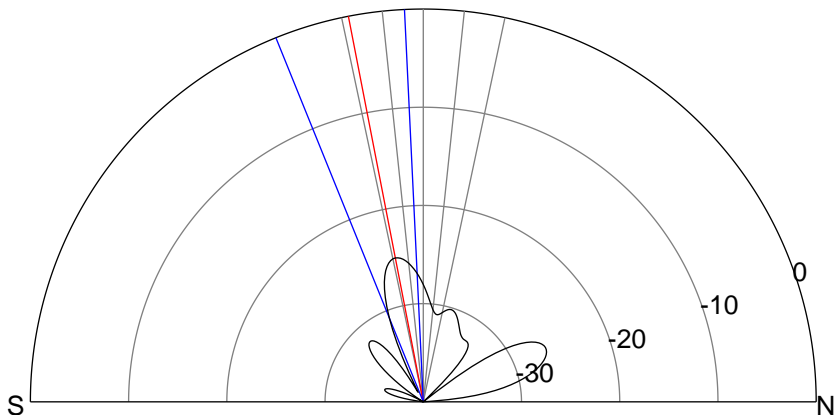
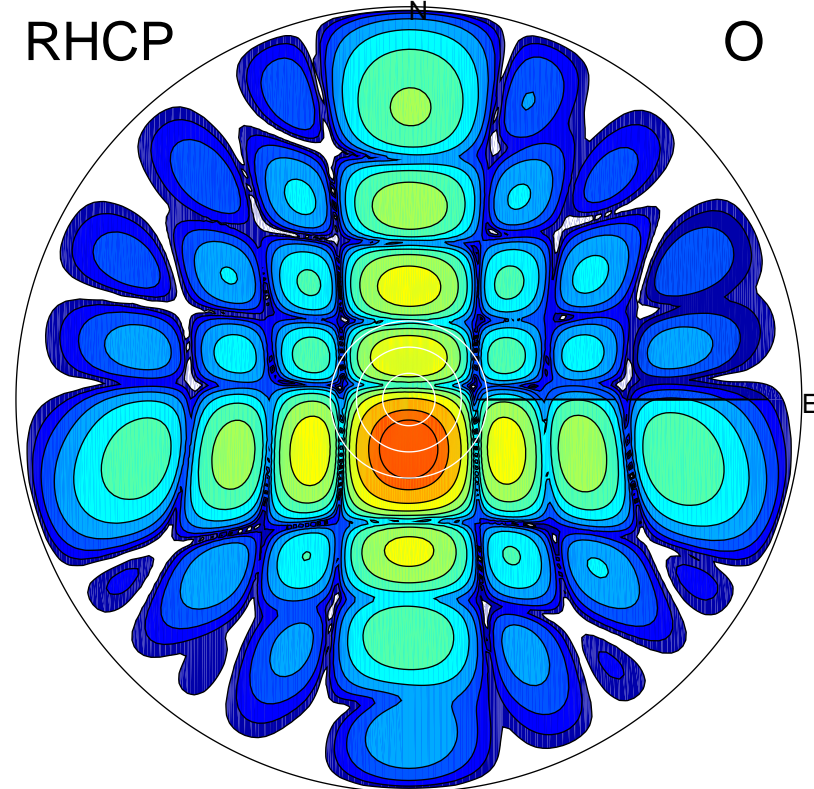
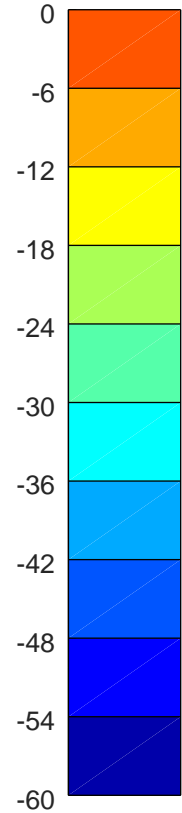
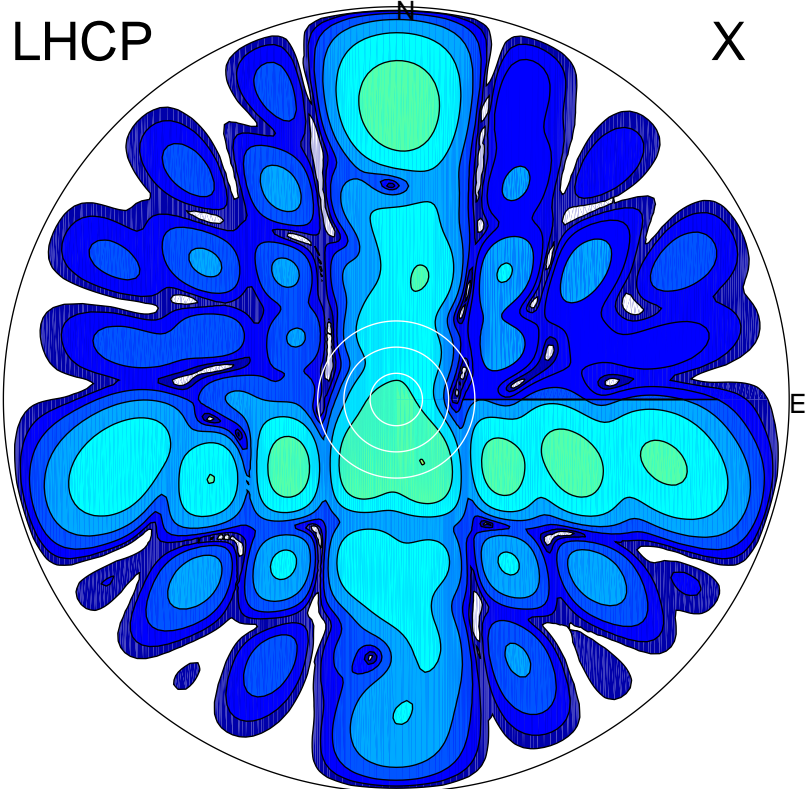


2018-10-16 11:42:16 A2 4.21000000 MHz 909.0 kW



ERP 0.7 MW

Peak gain -1.3 dBi at Az 158 Zen 15
RHCP gain 20.2 dBi
N-S peak -2.4 dBi at Zen -11.0
N-S -3 dB beamwidth 19.3 deg.

ERP 169.6 MW

Peak gain 22.7 dBi at Az 181 Zen 11
LHCP gain -2.4 dBi
N-S peak 22.7 dBi at Zen -11.3
N-S -3 dB beamwidth 13.4 deg.