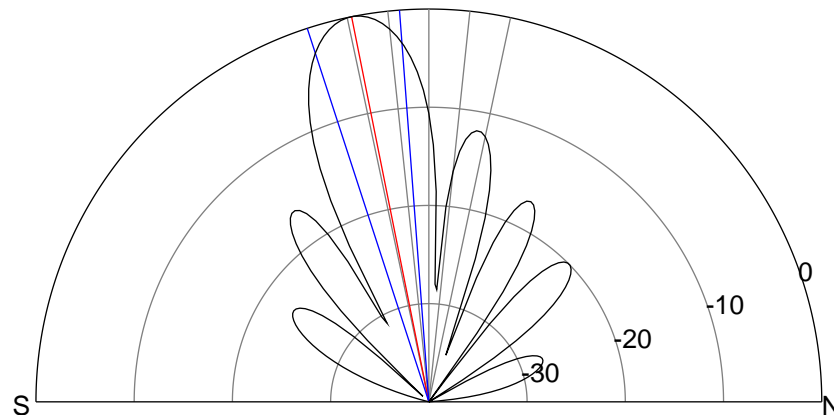
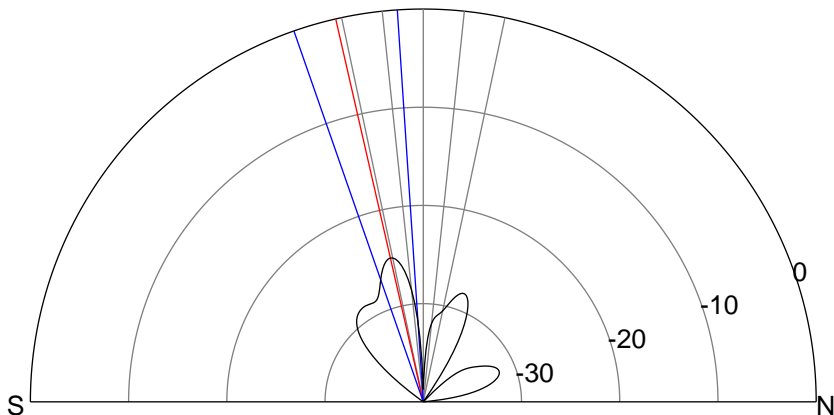
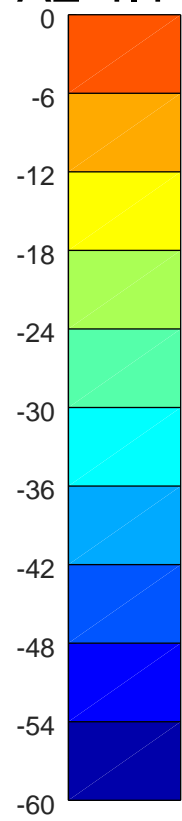
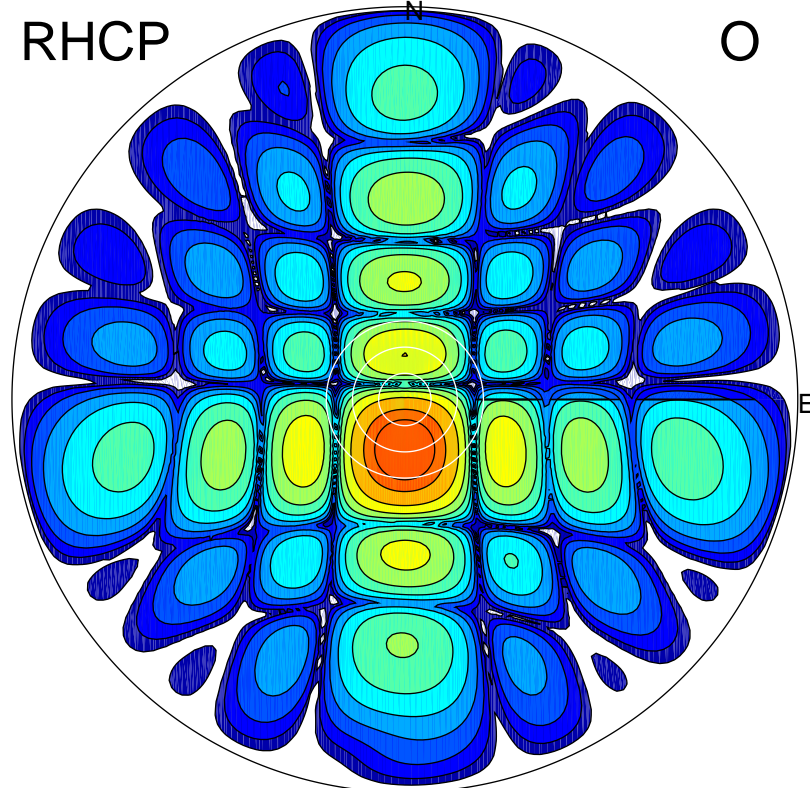
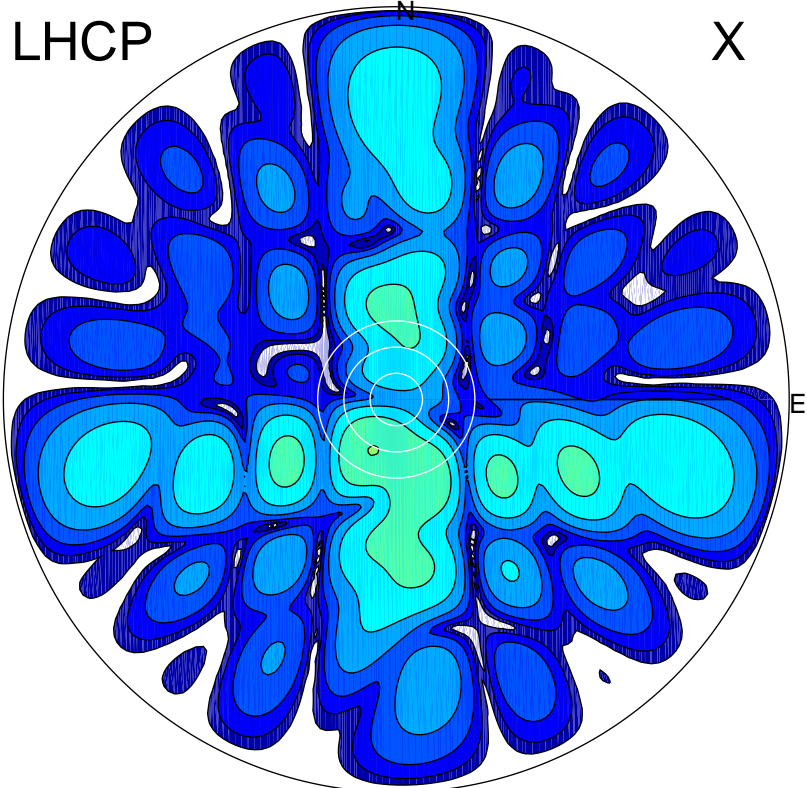


2018-10-16 11:36:16 A2 4.11000000 MHz 897.0 kW



ERP 0.7 MW

Peak gain -1.4 dBi at Az 204 Zen 13
RHCP gain 20.8 dBi
N-S peak -2.4 dBi at Zen -12.9
N-S -3 dB beamwidth 15.4 deg.

ERP 160.6 MW

Peak gain 22.5 dBi at Az 180 Zen 11
LHCP gain -2.7 dBi
N-S peak 22.5 dBi at Zen -11.3
N-S -3 dB beamwidth 13.7 deg.