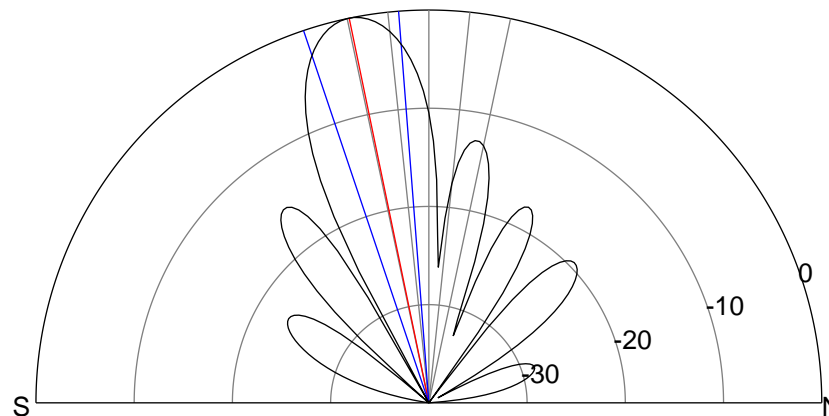
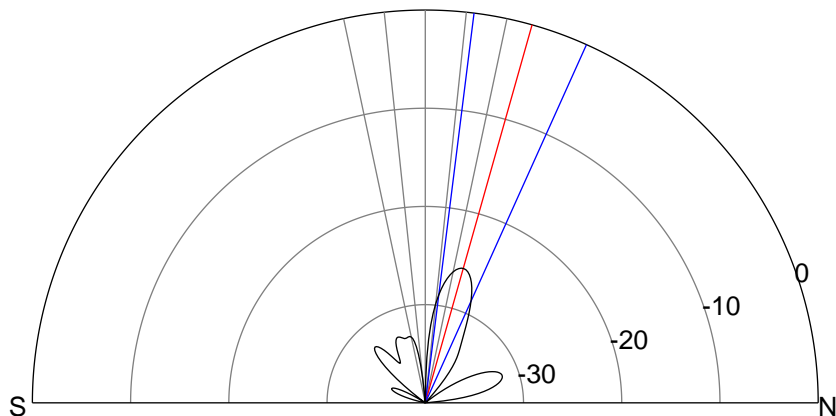
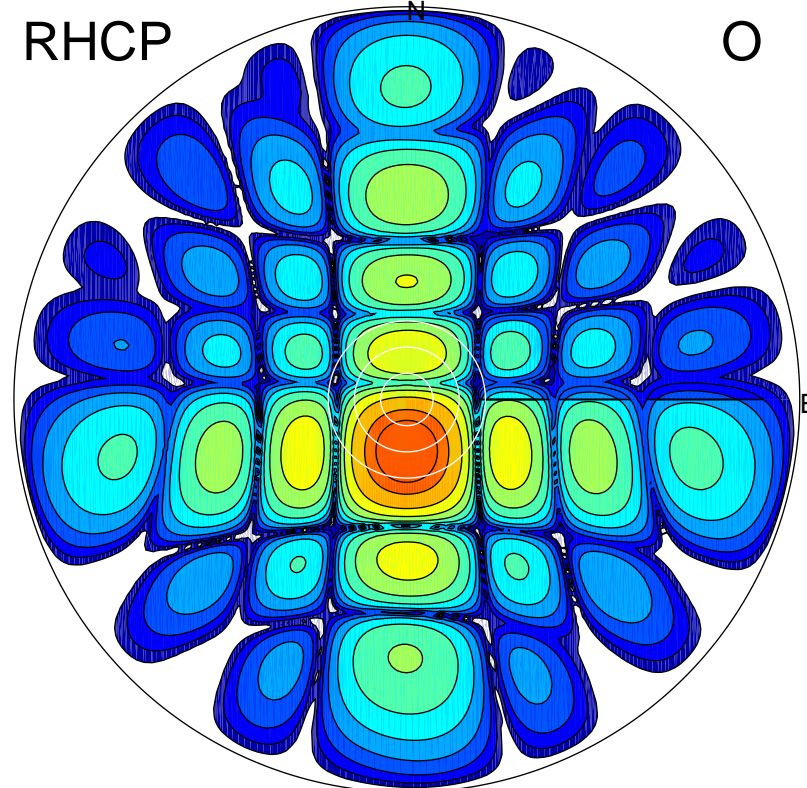
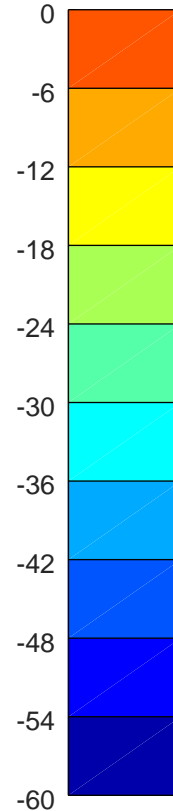
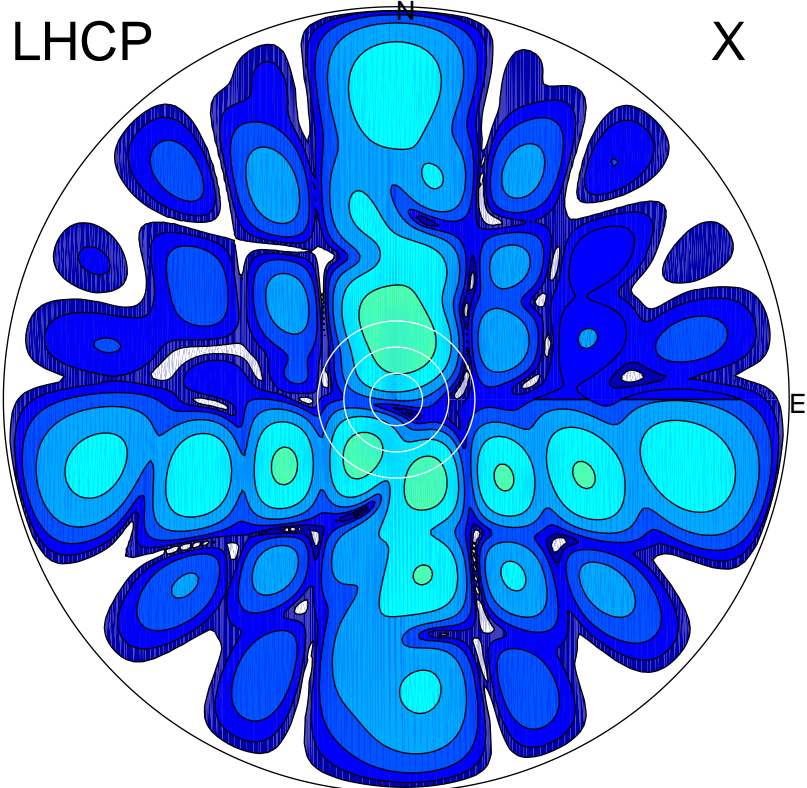


2018-10-16 11:30:16 A2 4.01000000 MHz 890.0 kW



ERP 0.4 MW

Peak gain -3.4 dBi at Az 2 Zen 16
RHCP gain 4.1 dBi
N-S peak -3.4 dBi at Zen 15.8
N-S -3 dB beamwidth 17.1 deg.

ERP 152.2 MW

Peak gain 22.3 dBi at Az 179 Zen 12
LHCP gain -11.0 dBi
N-S peak 22.3 dBi at Zen -11.7
N-S -3 dB beamwidth 14.2 deg.