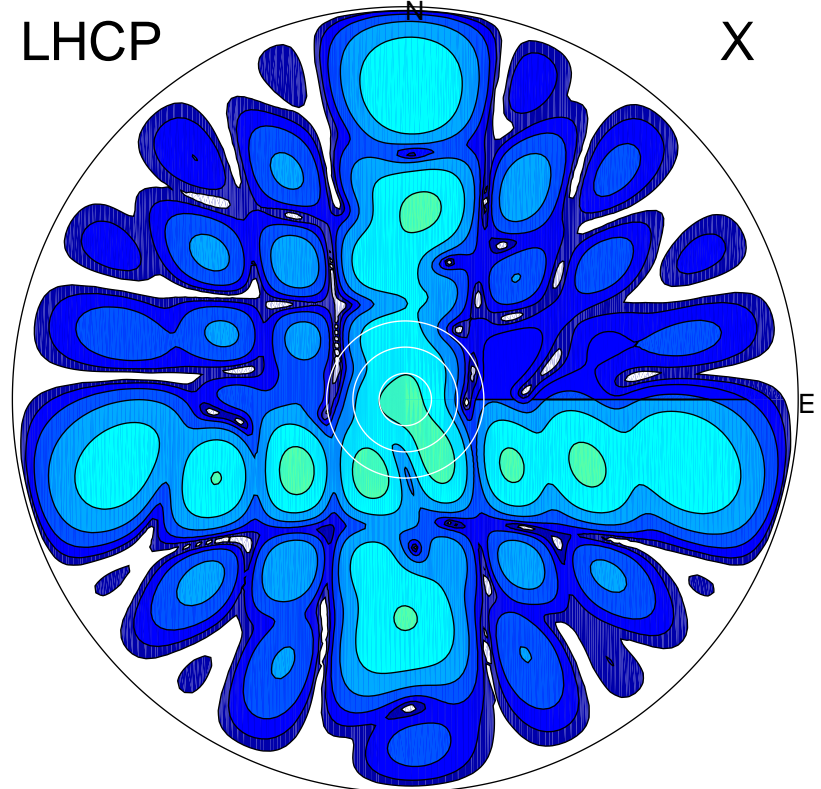


2018-10-16 11:24:16 A2 4.12000000 MHz 899.0 kW

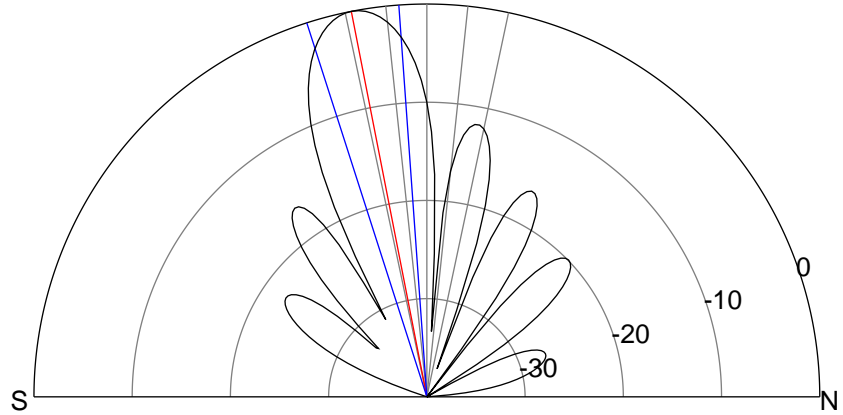
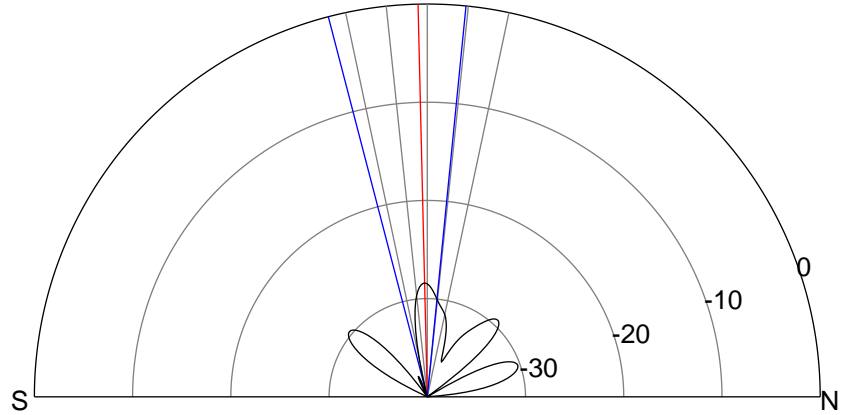
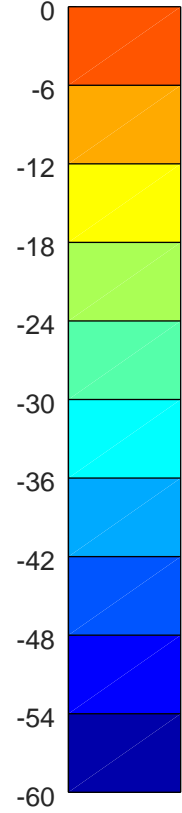
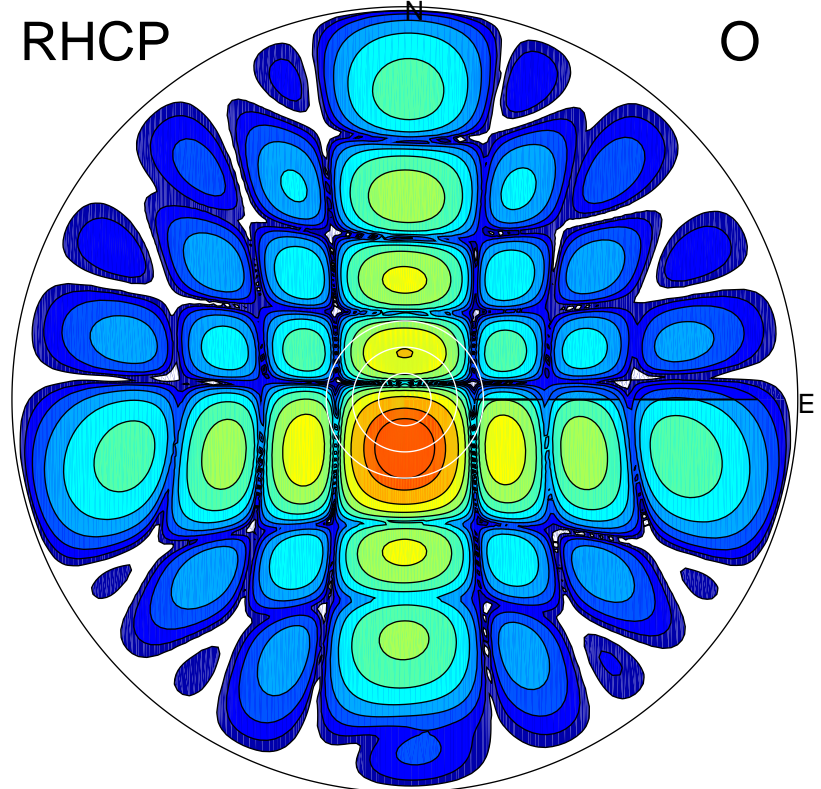
LHCP

X



RHCP

O



### ERP 0.3 MW

Peak gain -4.7 dBi at Az 205 Zen 19  
RHCP gain 16.2 dBi  
N-S peak -5.8 dBi at Zen -1.3  
N-S -3 dB beamwidth 20.2 deg.

### ERP 162.1 MW

Peak gain 22.6 dBi at Az 181 Zen 11  
LHCP gain -12.4 dBi  
N-S peak 22.6 dBi at Zen -11.1  
N-S -3 dB beamwidth 13.7 deg.