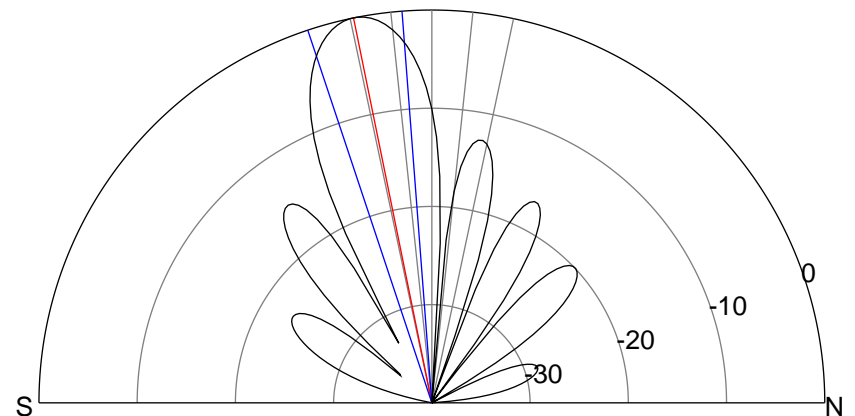
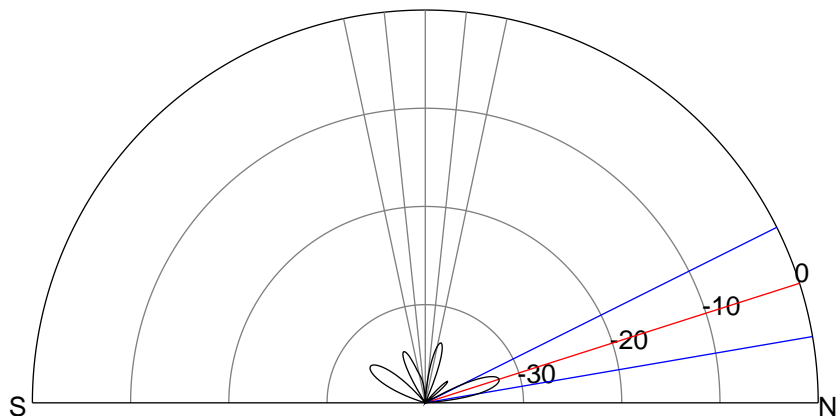
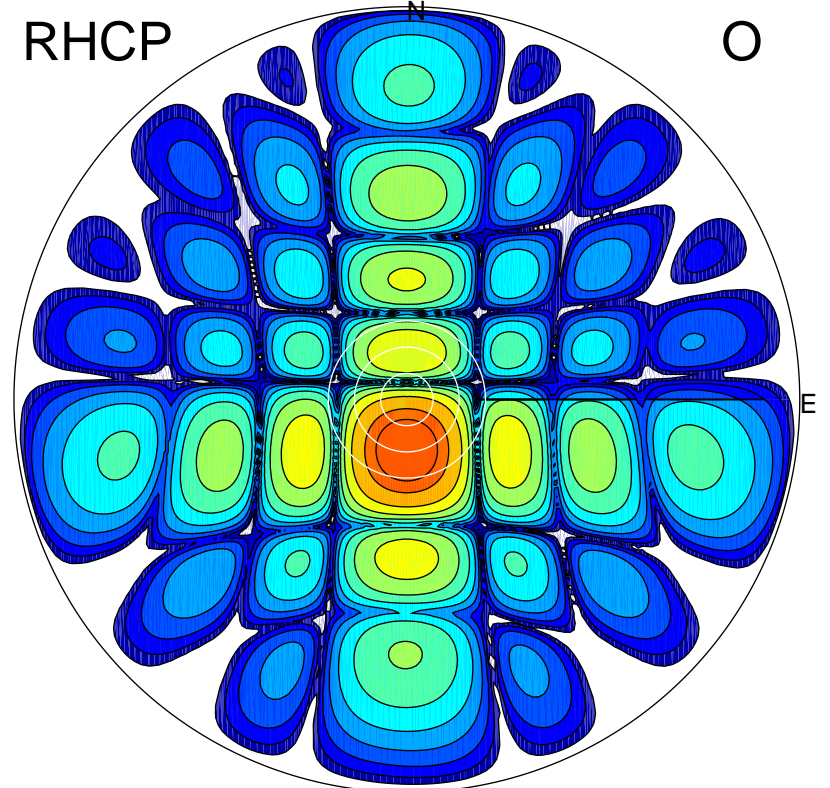
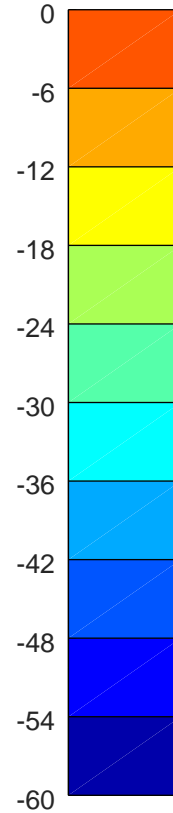
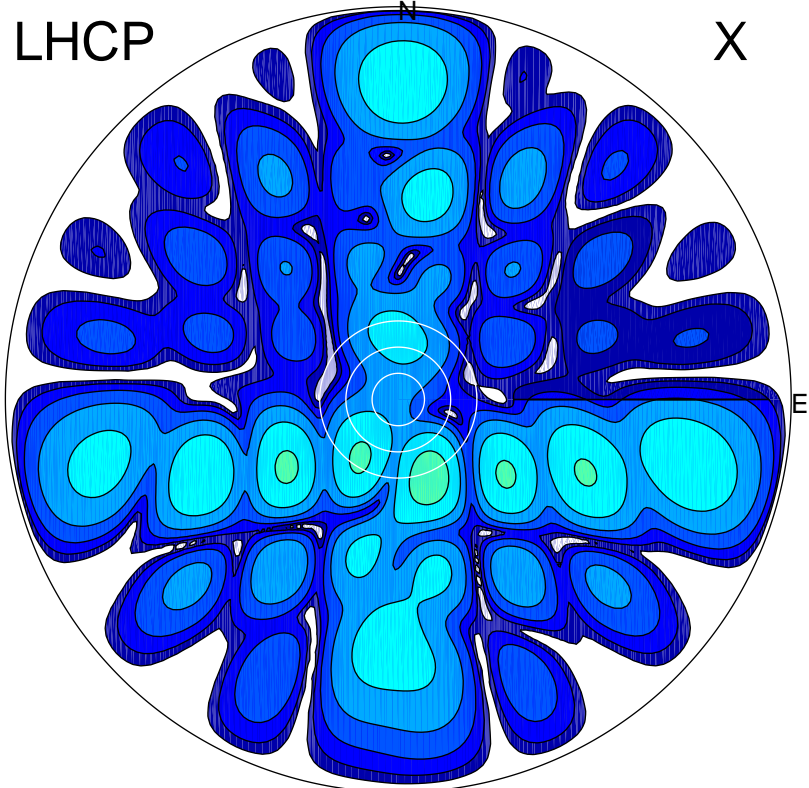


2018-10-16 11:18:16 A2 4.02000000 MHz 886.0 kW



ERP 0.3 MW

Peak gain -4.8 dBi at Az 159 Zen 19
RHCP gain 17.4 dBi
N-S peak -9.7 dBi at Zen 72.3
N-S -3 dB beamwidth 16.8 deg.

ERP 153.0 MW

Peak gain 22.4 dBi at Az 181 Zen 11
LHCP gain -14.8 dBi
N-S peak 22.4 dBi at Zen -11.5
N-S -3 dB beamwidth 14.1 deg.