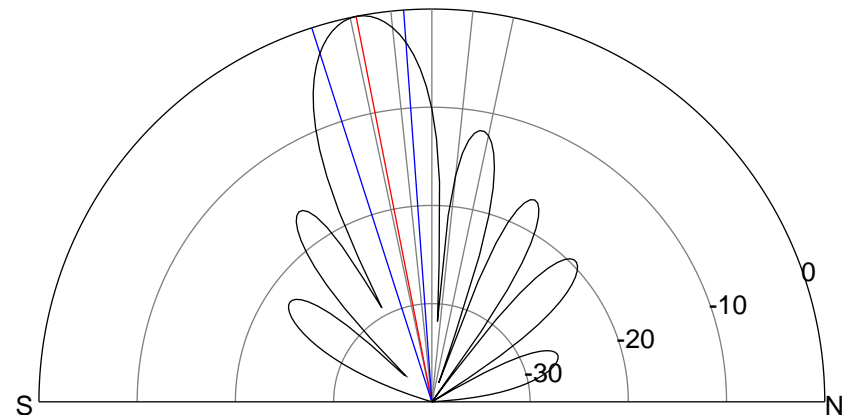
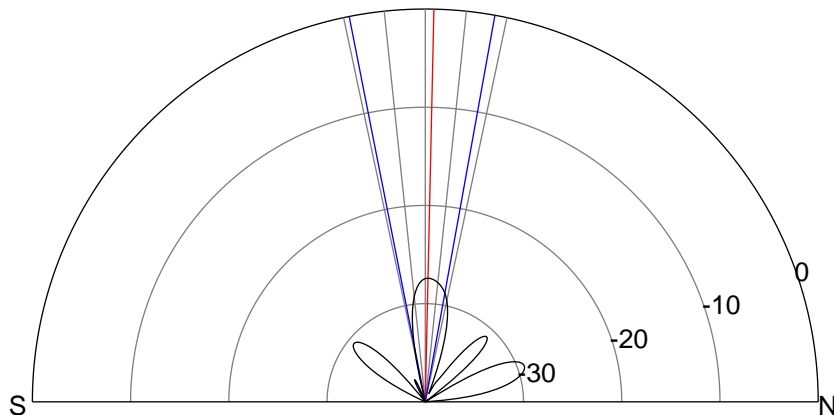
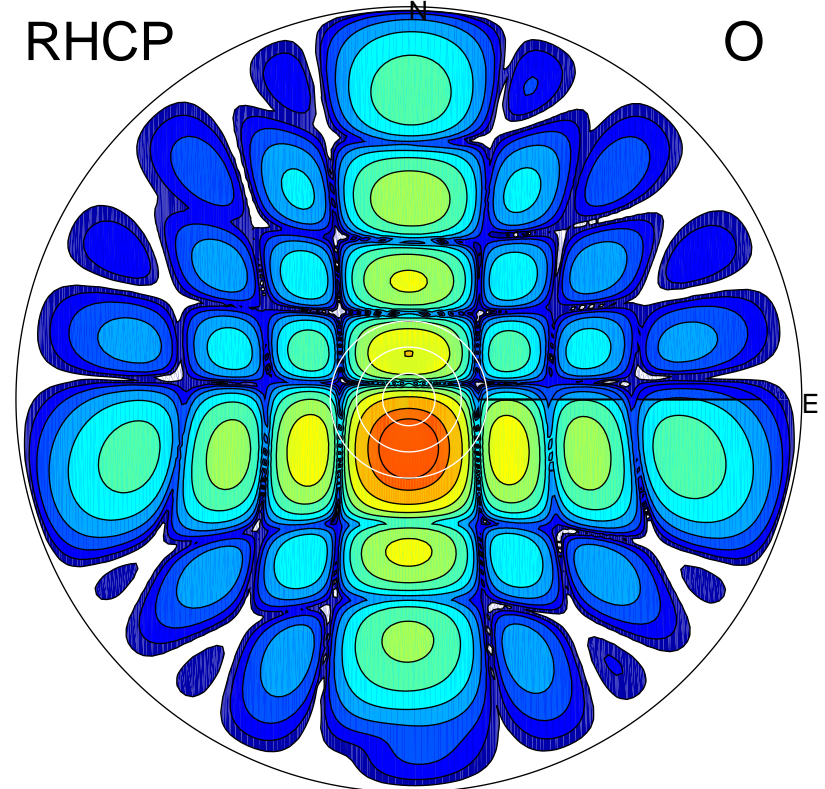
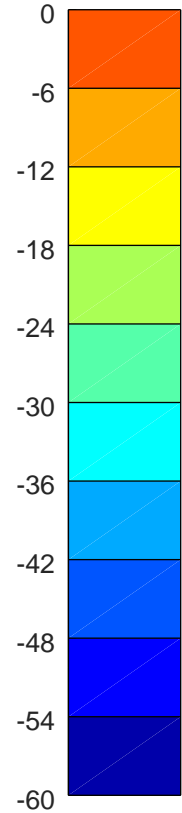
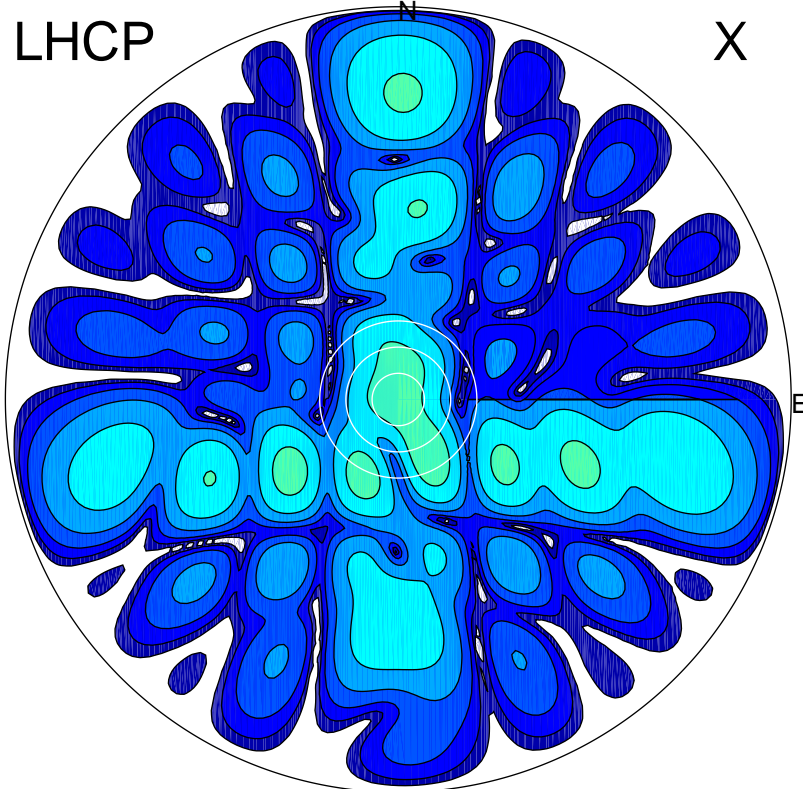


2018-10-16 11:12:16 A2 4.13000000 MHz 907.0 kW



ERP 0.3 MW

Peak gain -4.3 dBi at Az 151 Zen 14
RHCP gain 19.5 dBi
N-S peak -4.8 dBi at Zen 1.3
N-S -3 dB beamwidth 21.4 deg.

ERP 164.3 MW

Peak gain 22.6 dBi at Az 181 Zen 11
LHCP gain -11.9 dBi
N-S peak 22.6 dBi at Zen -11.1
N-S -3 dB beamwidth 13.7 deg.