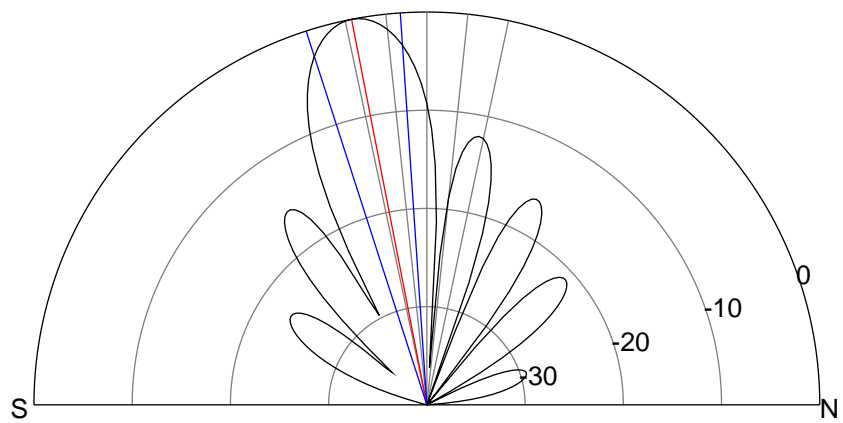
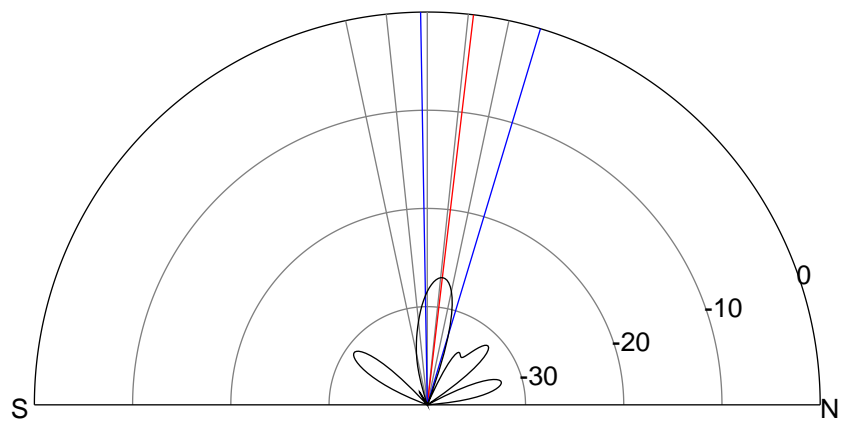
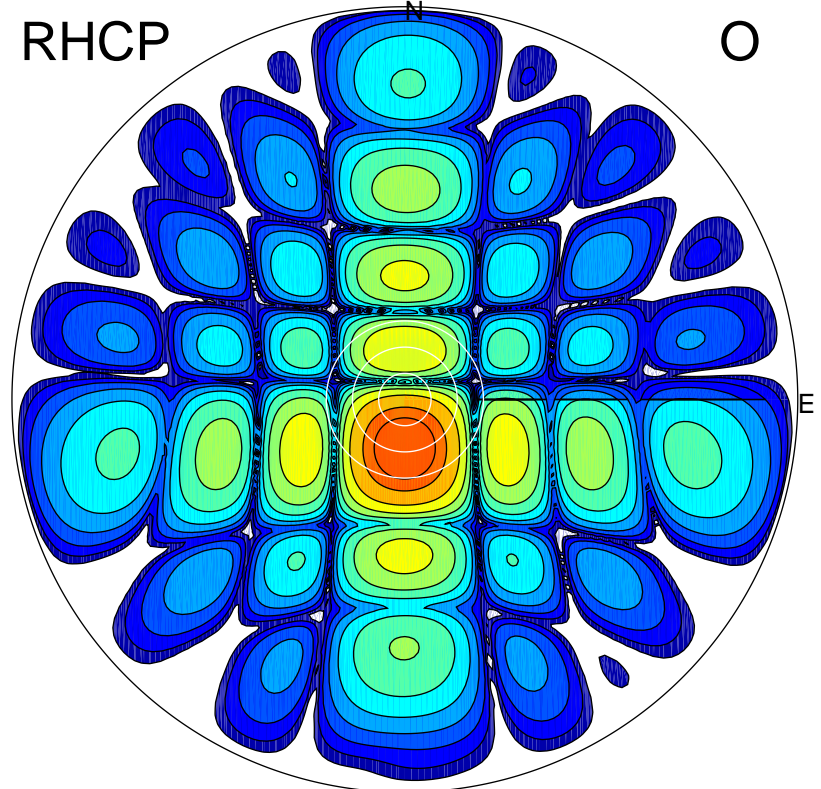
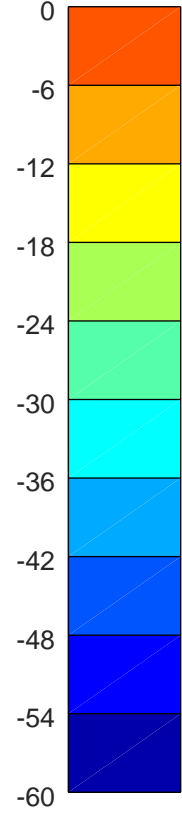
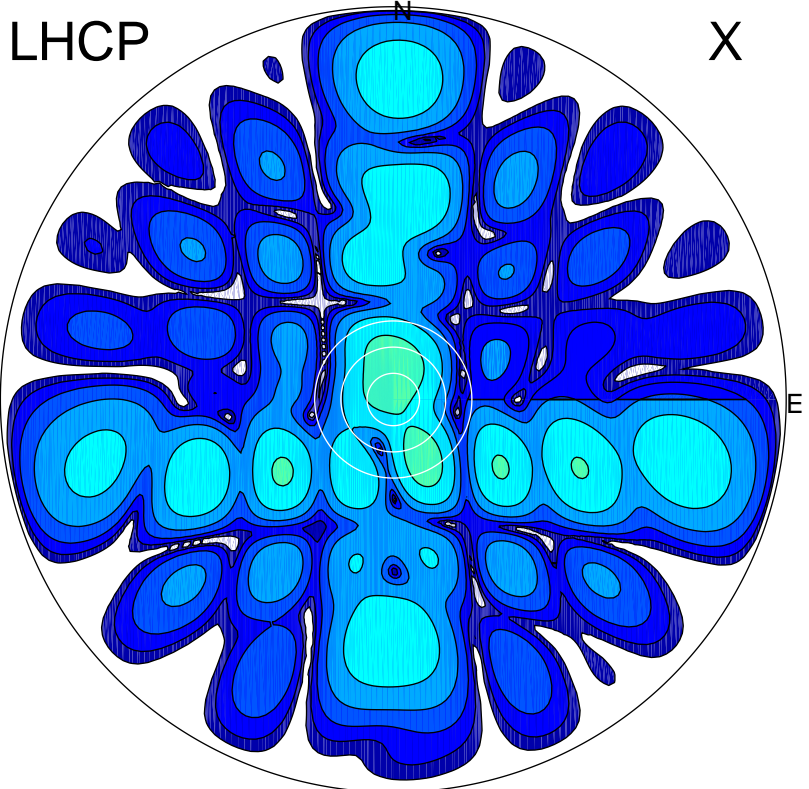


2018-10-16 11:06:16 A2 4.03000000 MHz 888.0 kW



ERP 0.3 MW

Peak gain -4.6 dBi at Az 3 Zen 7
RHCP gain 6.6 dBi
N-S peak -4.6 dBi at Zen 6.8
N-S -3 dB beamwidth 17.7 deg.

ERP 154.0 MW

Peak gain 22.4 dBi at Az 181 Zen 11
LHCP gain -12.3 dBi
N-S peak 22.4 dBi at Zen -11.0
N-S -3 dB beamwidth 14.0 deg.