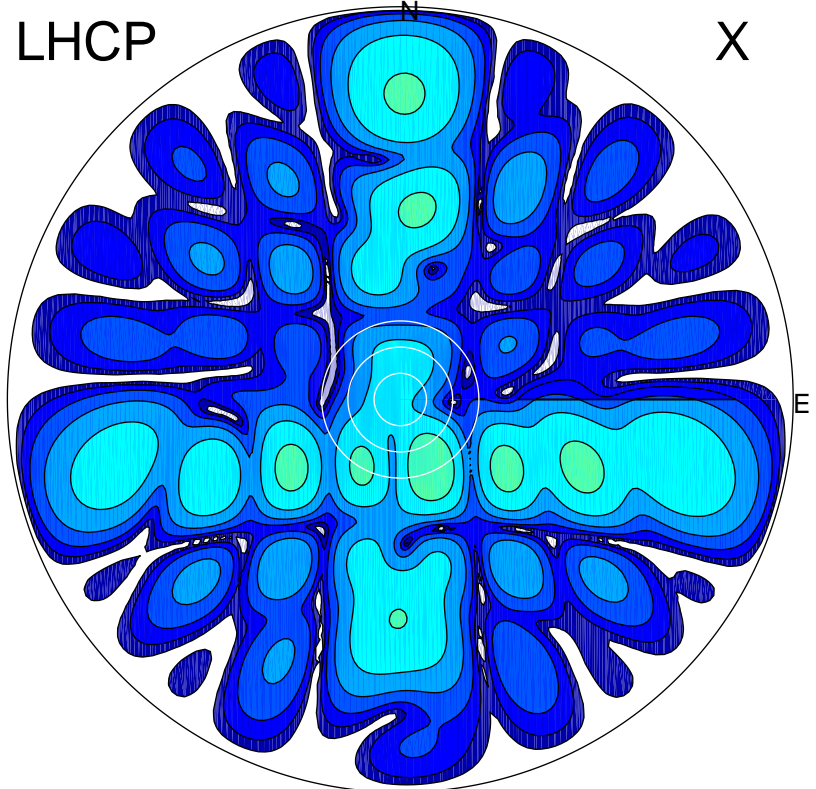
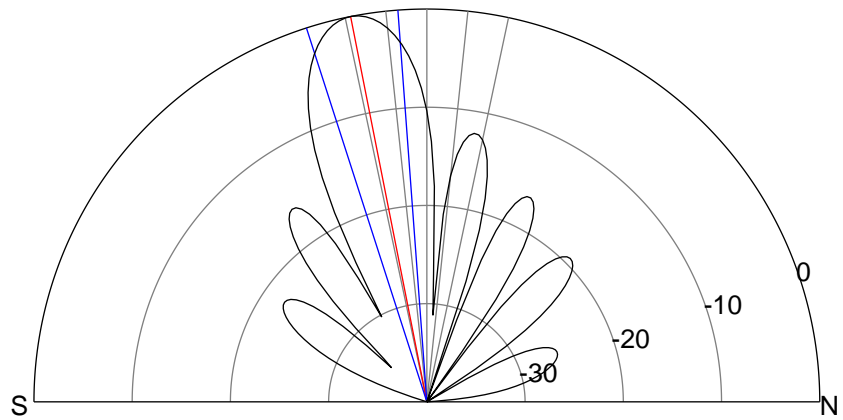
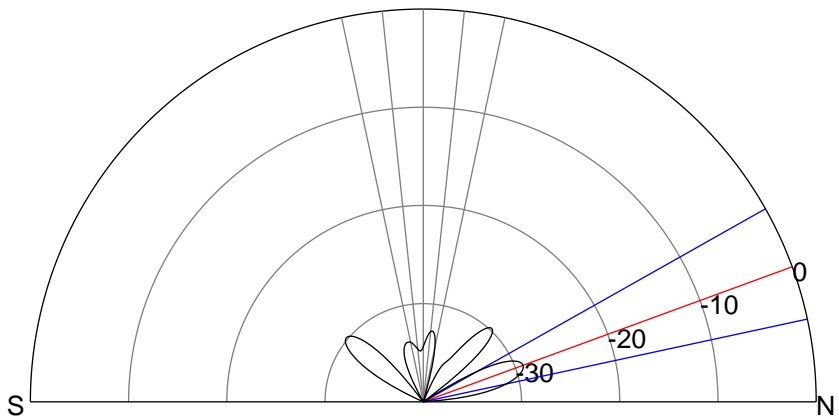
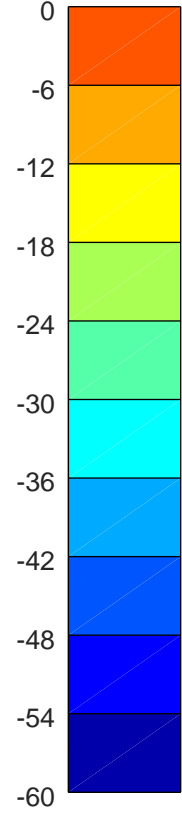
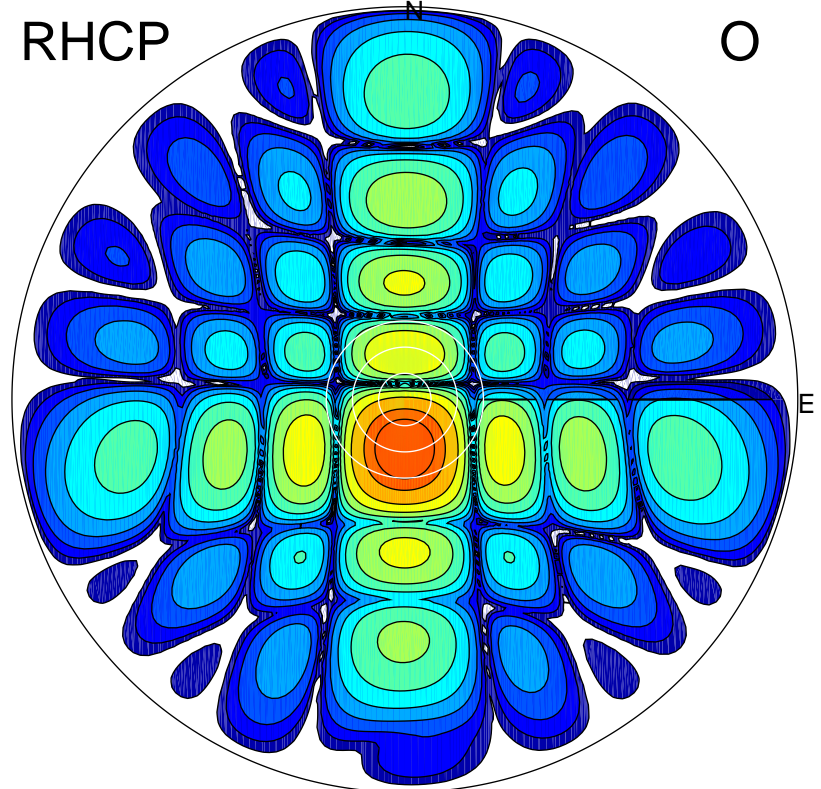


2018-10-16 11:00:16 A2 4.14000000 MHz 886.0 kW

LHCP



RHCP



ERP 0.4 MW

Peak gain -3.1 dBi at Az 156 Zen 17
RHCP gain 18.4 dBi
N-S peak -6.6 dBi at Zen 69.9
N-S -3 dB beamwidth 17.3 deg.

ERP 161.6 MW

Peak gain 22.6 dBi at Az 180 Zen 11
LHCP gain -11.3 dBi
N-S peak 22.6 dBi at Zen -11.2
N-S -3 dB beamwidth 13.6 deg.