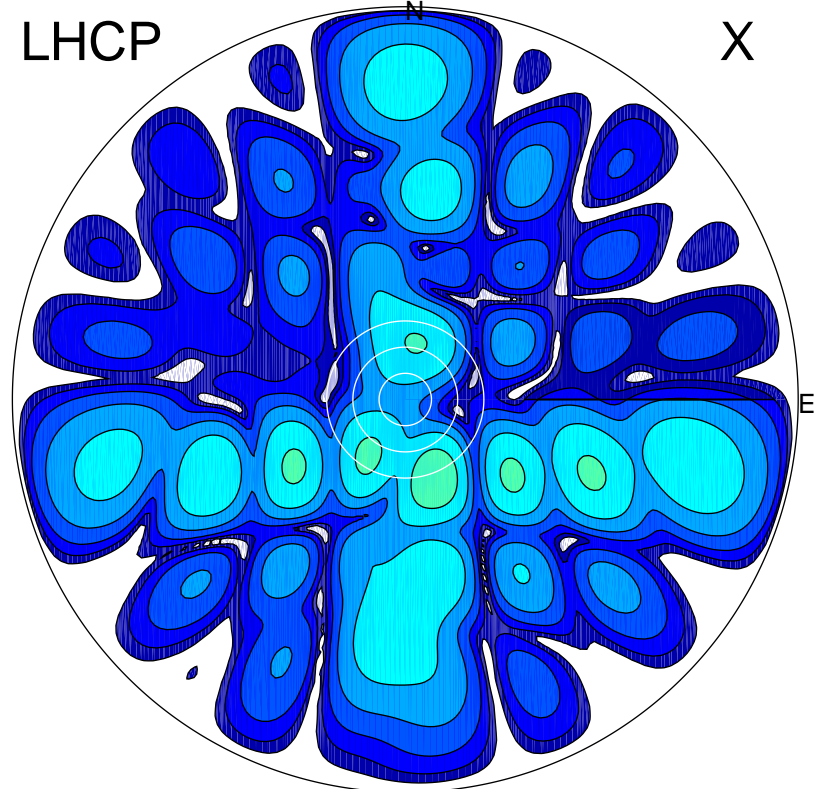


2018-10-16 10:54:16 A2 4.04000000 MHz 890.0 kW

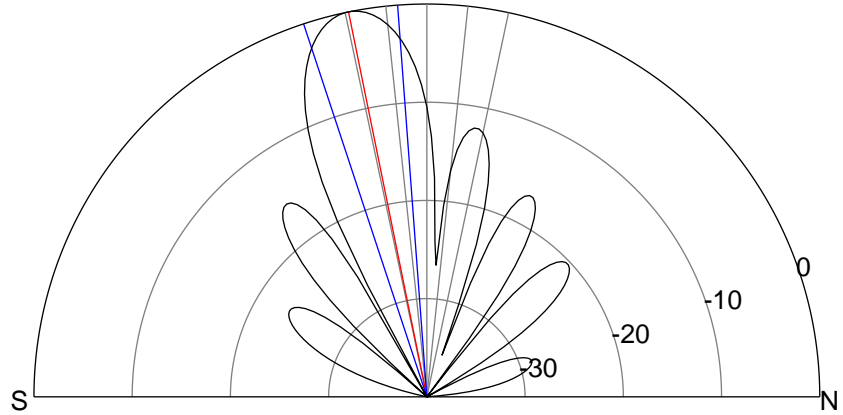
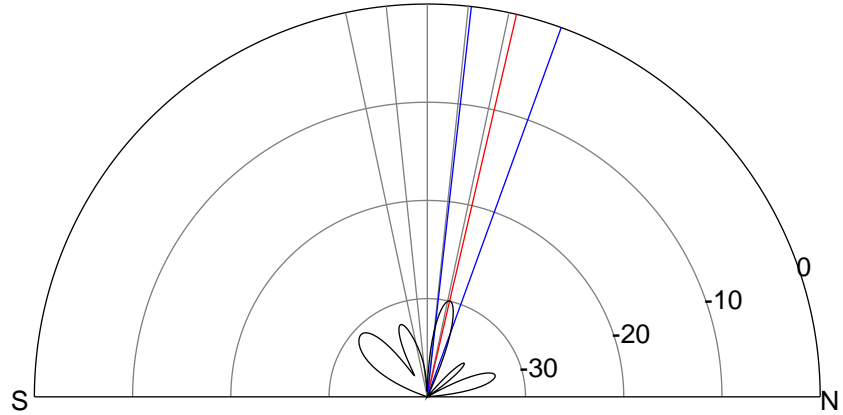
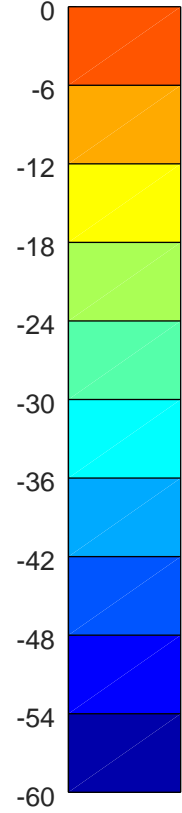
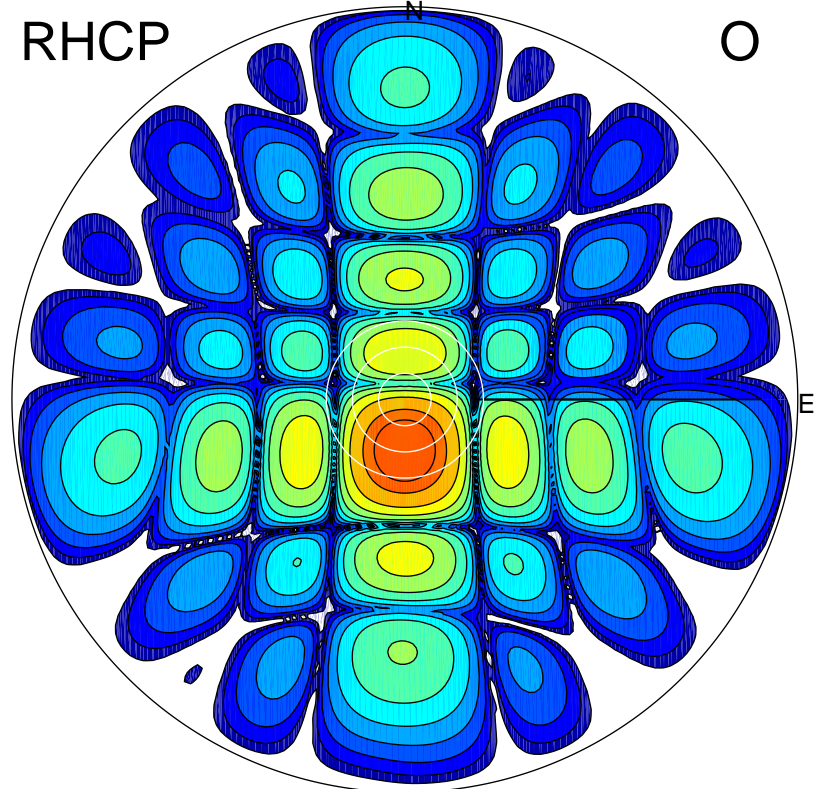
LHCP

X



RHCP

O



ERP 0.4 MW

Peak gain -3.9 dBi at Az 159 Zen 19
RHCP gain 17.5 dBi
N-S peak -7.6 dBi at Zen 13.1
N-S -3 dB beamwidth 13.5 deg.

ERP 154.4 MW

Peak gain 22.4 dBi at Az 181 Zen 11
LHCP gain -12.4 dBi
N-S peak 22.4 dBi at Zen -11.5
N-S -3 dB beamwidth 14.0 deg.