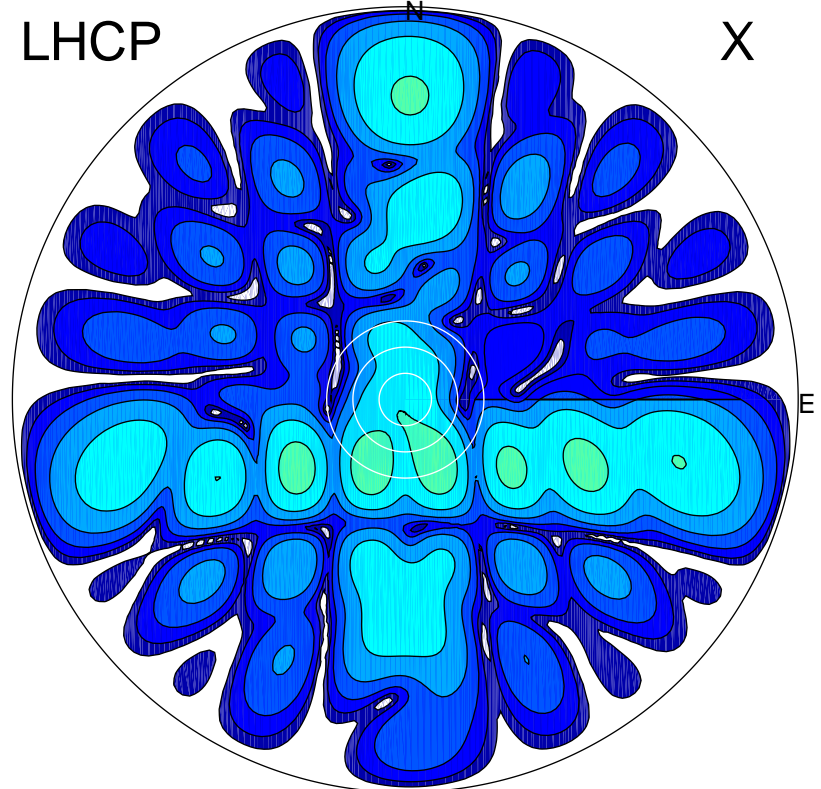


2018-10-16 10:48:16 A2 4.15000000 MHz 904.0 kW

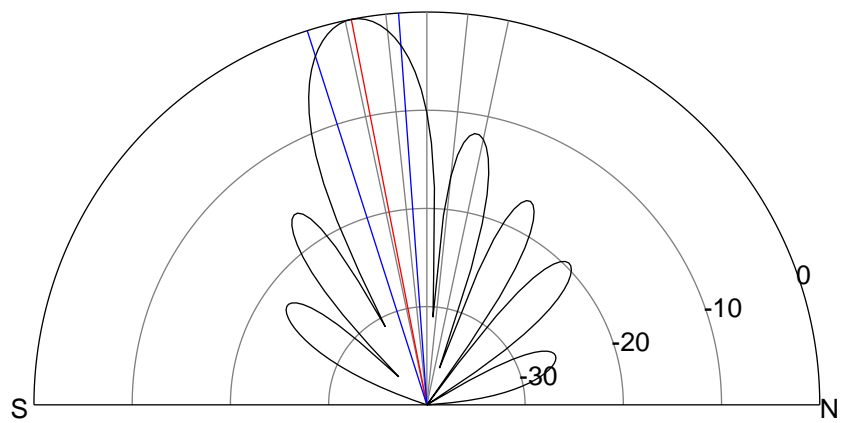
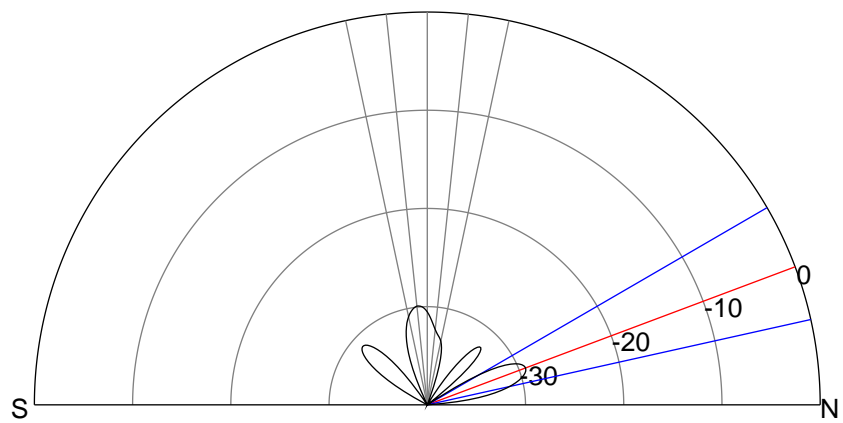
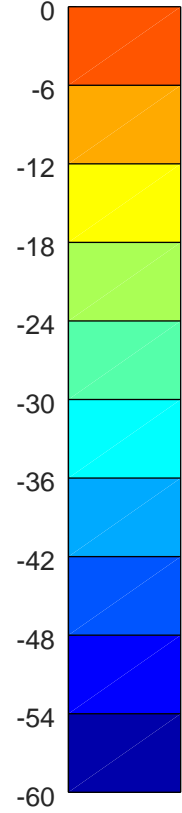
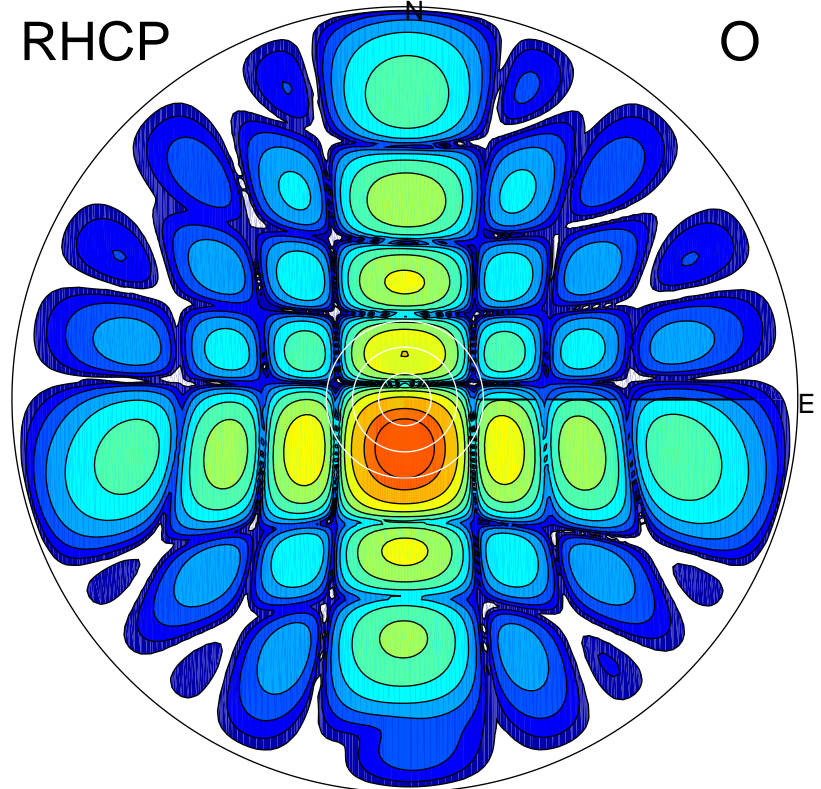
LHCP

X



RHCP

O



### ERP 0.4 MW

Peak gain -4.0 dBi at Az 154 Zen 16  
RHCP gain 18.8 dBi  
N-S peak -6.7 dBi at Zen 69.4  
N-S -3 dB beamwidth 17.6 deg.

### ERP 165.6 MW

Peak gain 22.6 dBi at Az 181 Zen 11  
LHCP gain -8.0 dBi  
N-S peak 22.6 dBi at Zen -11.1  
N-S -3 dB beamwidth 13.6 deg.