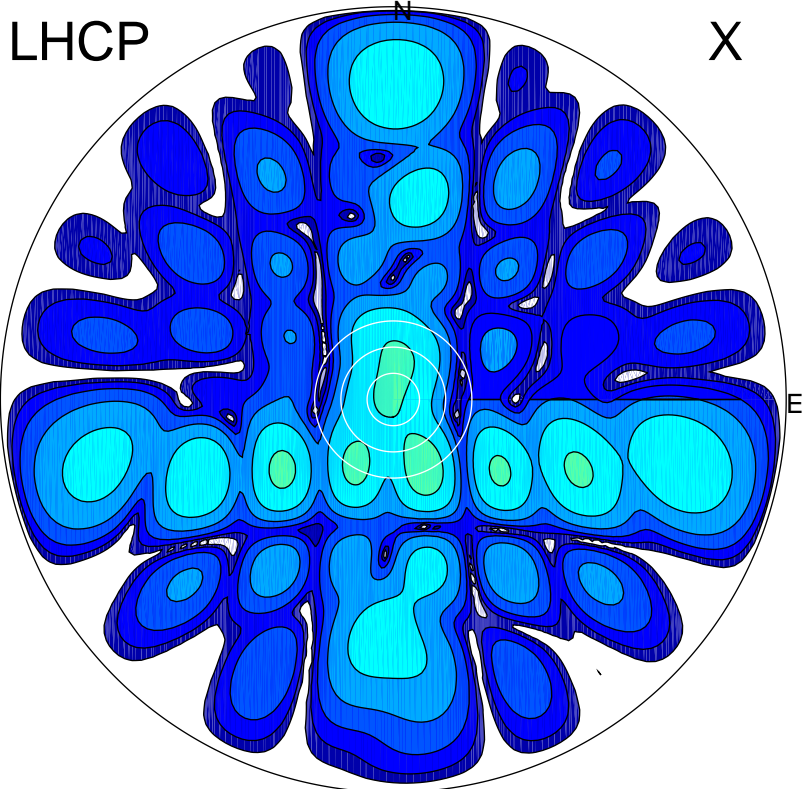
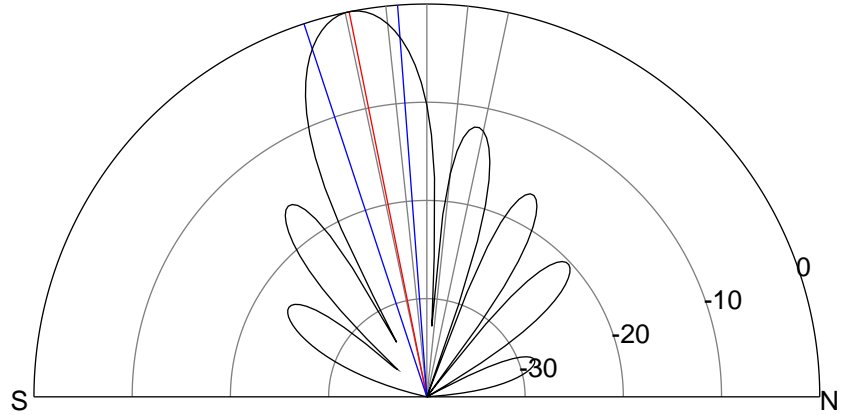
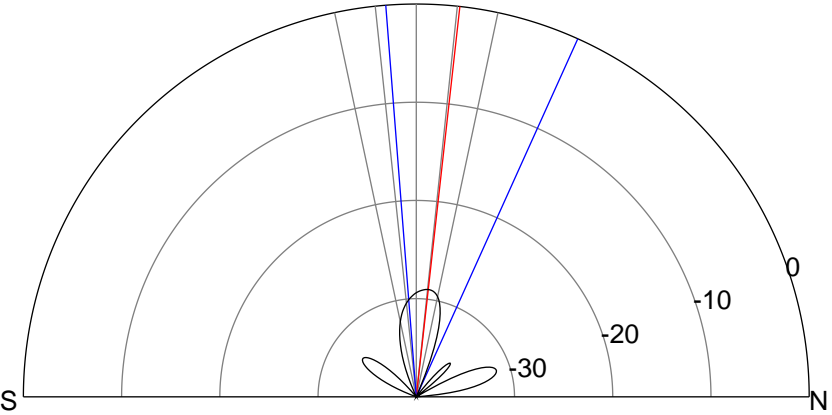
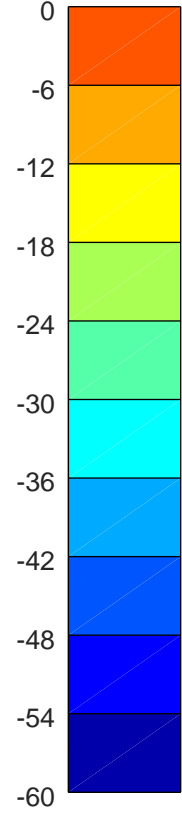
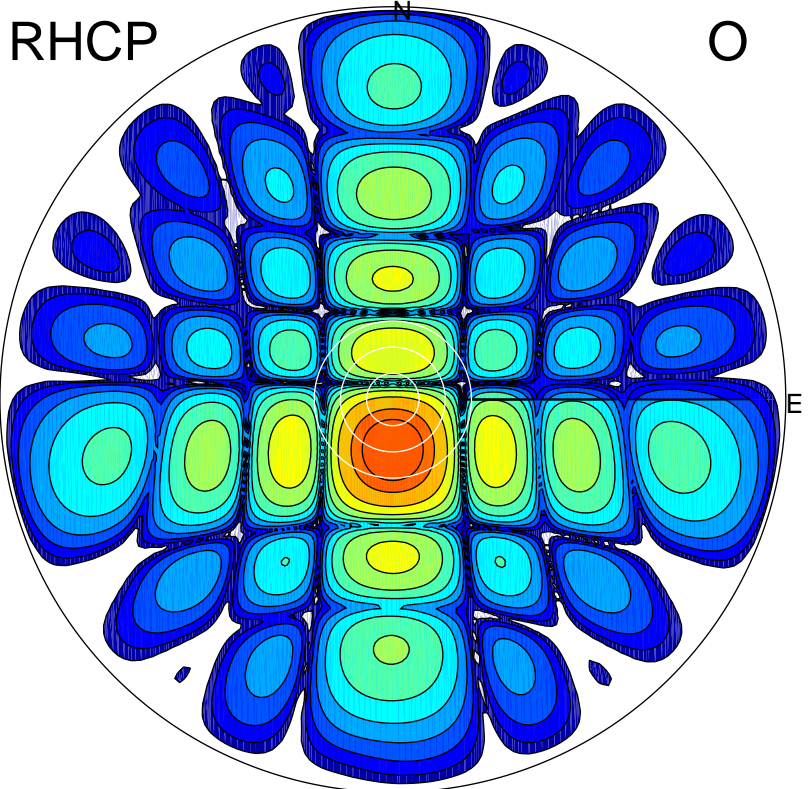


2018-10-16 10:43:21 A2 4.05000000 MHz 881.0 kW

LHCP



RHCP



### ERP 0.3 MW

Peak gain -4.9 dBi at Az 155 Zen 17  
RHCP gain 18.4 dBi  
N-S peak -6.6 dBi at Zen 6.4  
N-S -3 dB beamwidth 28.7 deg.

### ERP 153.8 MW

Peak gain 22.4 dBi at Az 181 Zen 11  
LHCP gain -9.5 dBi  
N-S peak 22.4 dBi at Zen -11.4  
N-S -3 dB beamwidth 14.0 deg.