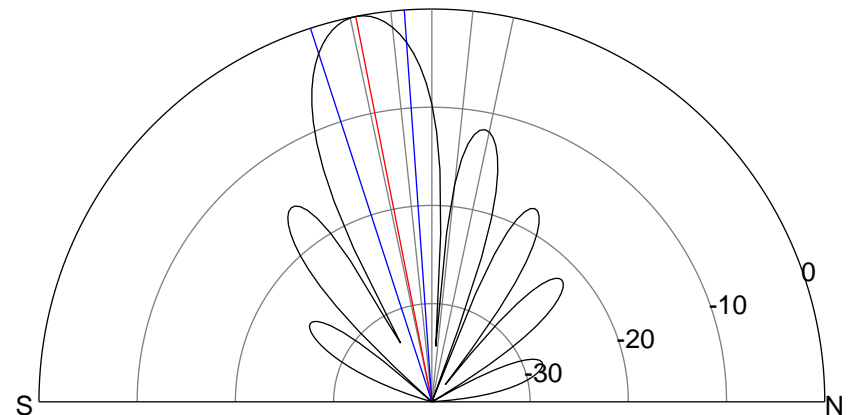
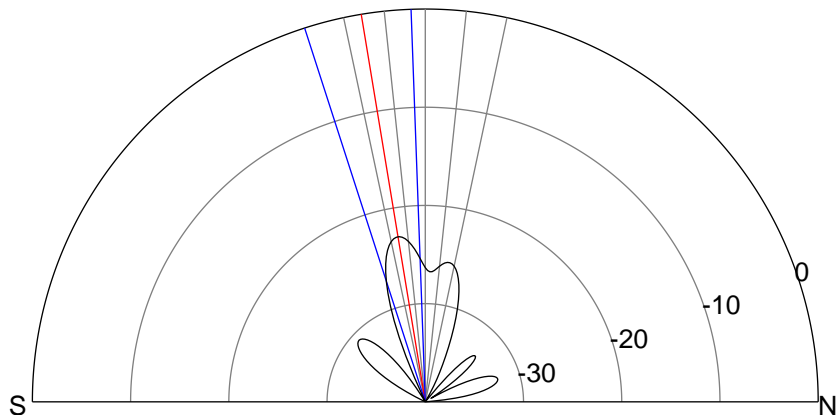
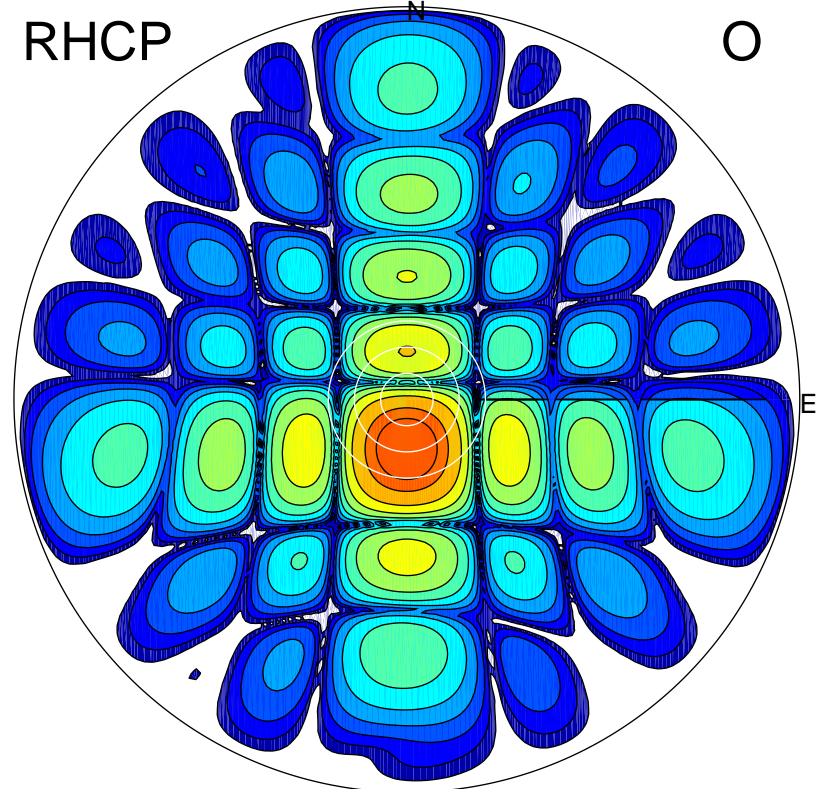
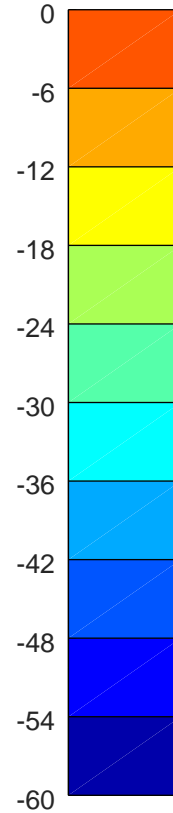
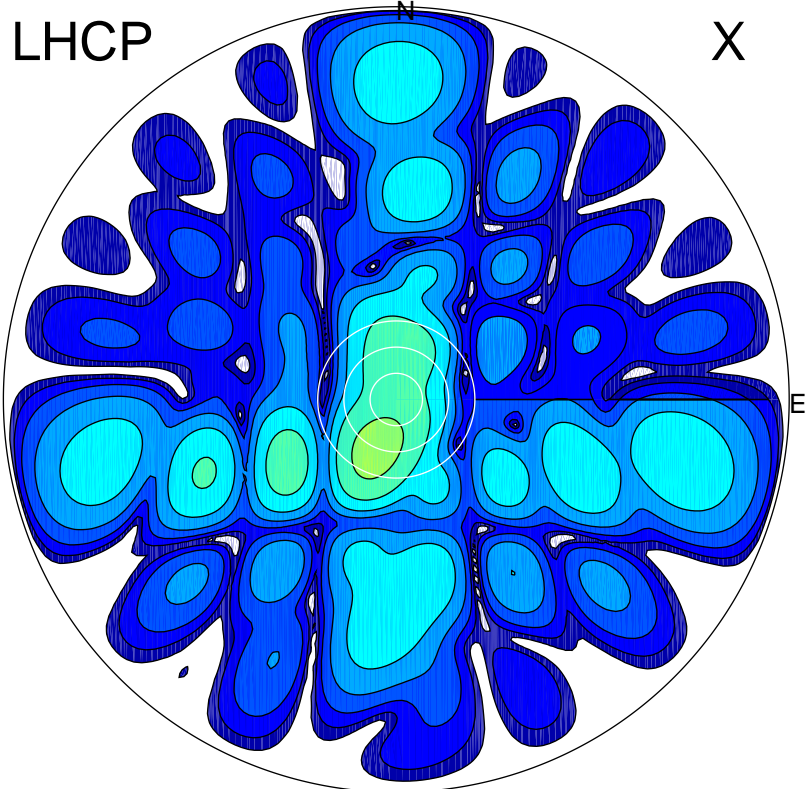


2018-10-16 10:42:16 A2 4.05000000 MHz 601.0 kW



ERP 0.7 MW

Peak gain 0.8 dBi at Az 202 Zen 12
RHCP gain 21.2 dBi
N-S peak -0.6 dBi at Zen -9.4
N-S -3 dB beamwidth 15.8 deg.

ERP 104.5 MW

Peak gain 22.4 dBi at Az 179 Zen 11
LHCP gain -0.8 dBi
N-S peak 22.4 dBi at Zen -11.2
N-S -3 dB beamwidth 14.0 deg.