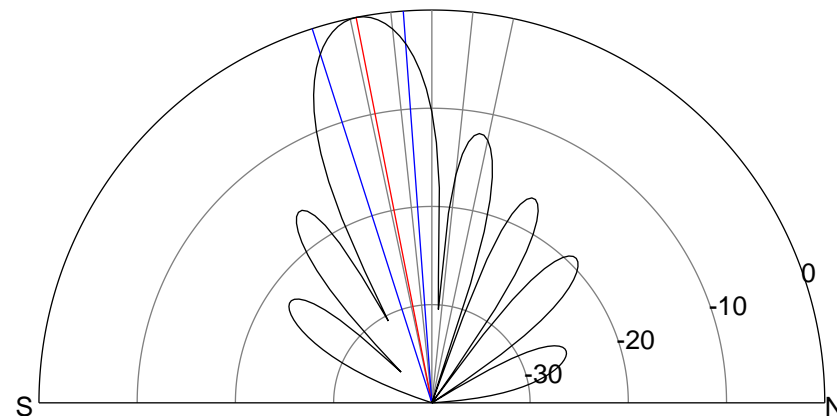
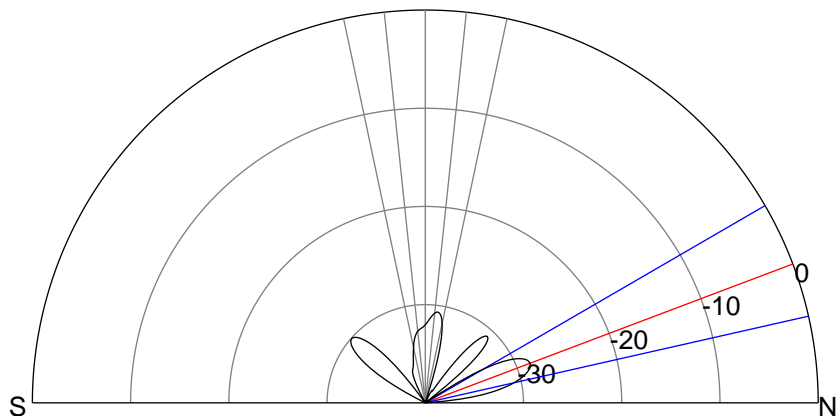
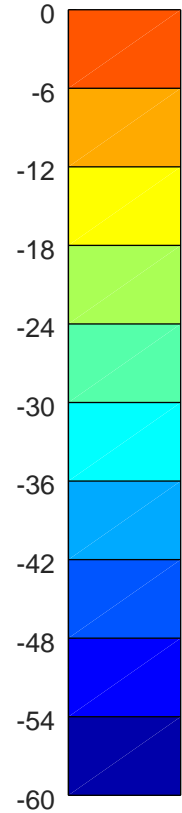
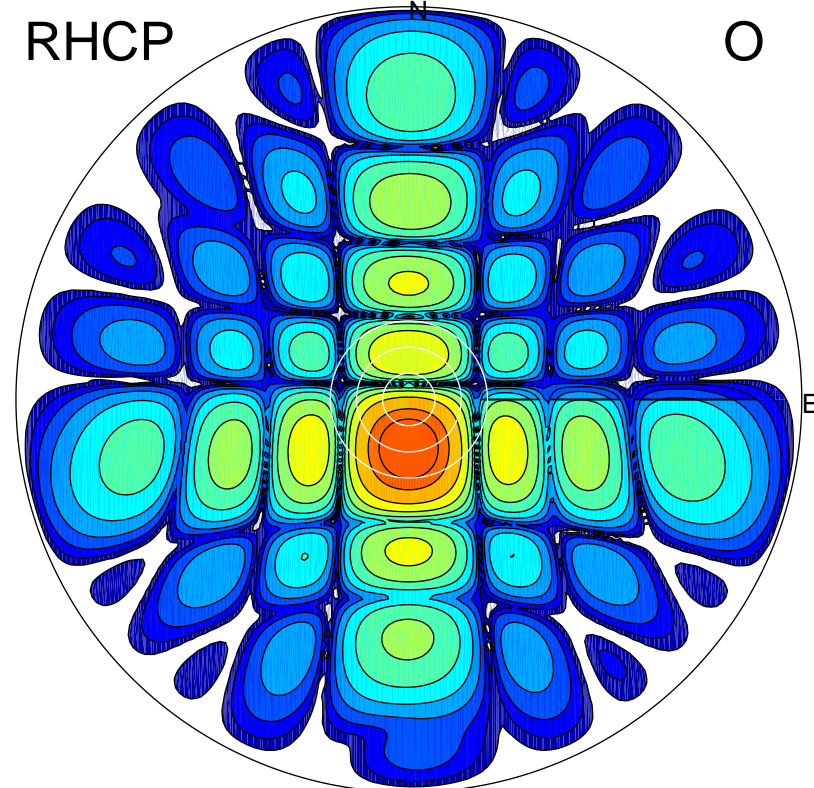
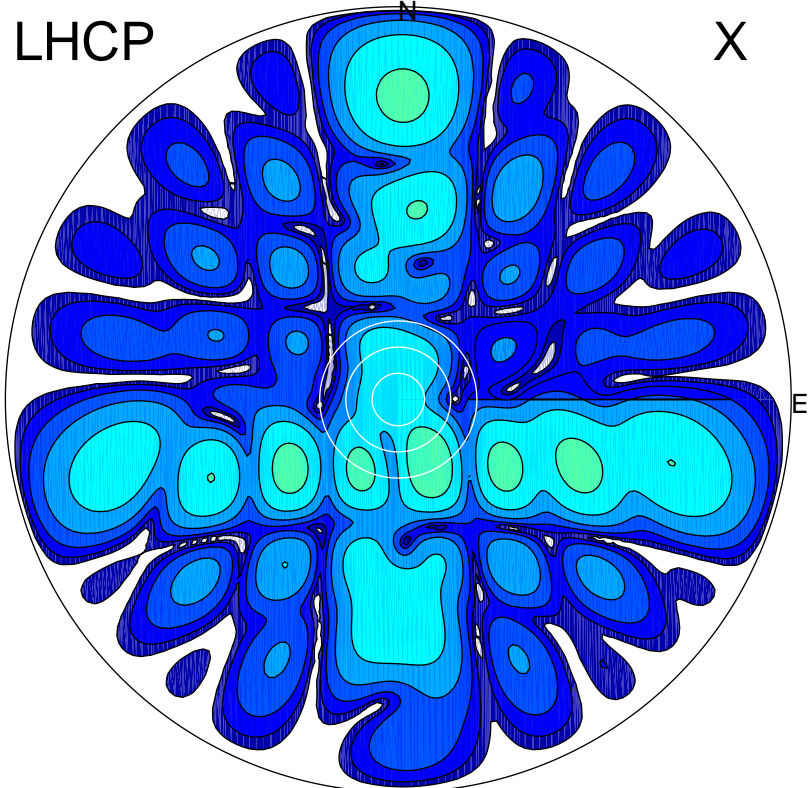


2018-10-16 10:36:16 A2 4.16000000 MHz 901.0 kW



### ERP 0.4 MW

Peak gain -3.1 dBi at Az 154 Zen 16  
RHCP gain 18.8 dBi  
N-S peak -6.0 dBi at Zen 69.3  
N-S -3 dB beamwidth 17.4 deg.

### ERP 165.9 MW

Peak gain 22.7 dBi at Az 180 Zen 11  
LHCP gain -11.2 dBi  
N-S peak 22.7 dBi at Zen -11.1  
N-S -3 dB beamwidth 13.6 deg.