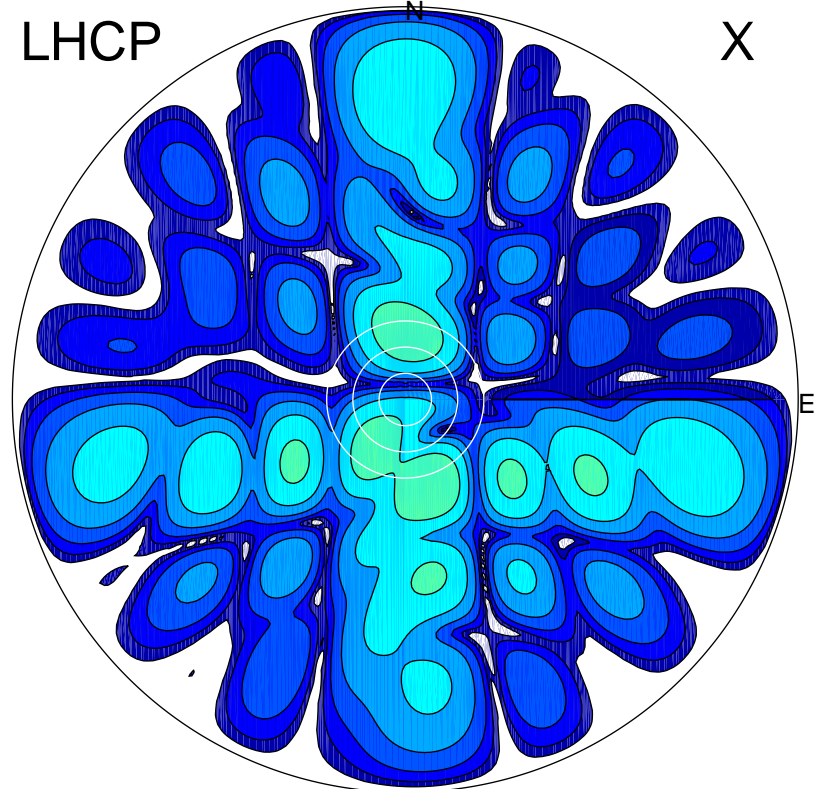


2018-10-16 10:30:16 A2 4.06000000 MHz 889.0 kW

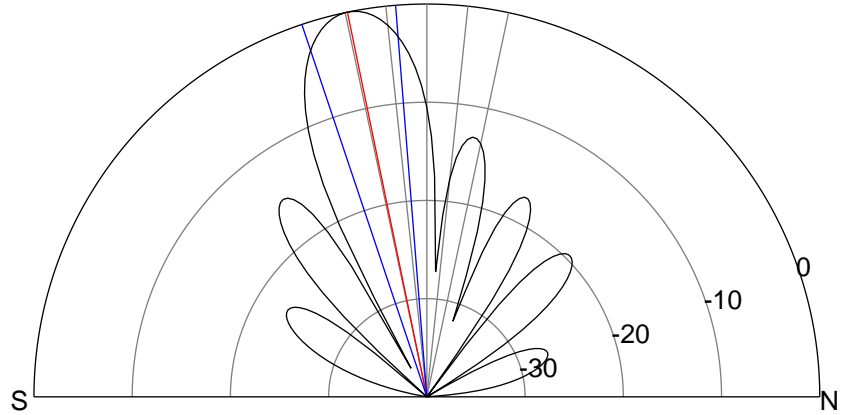
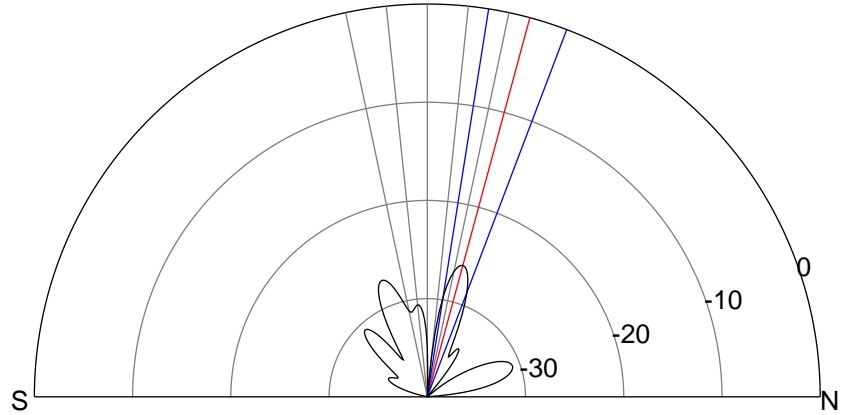
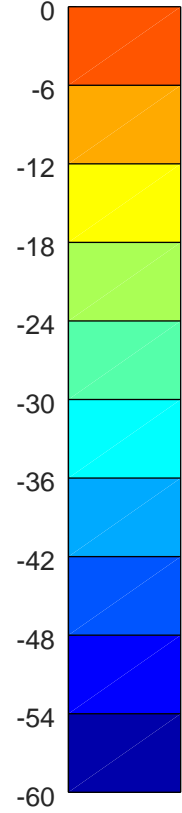
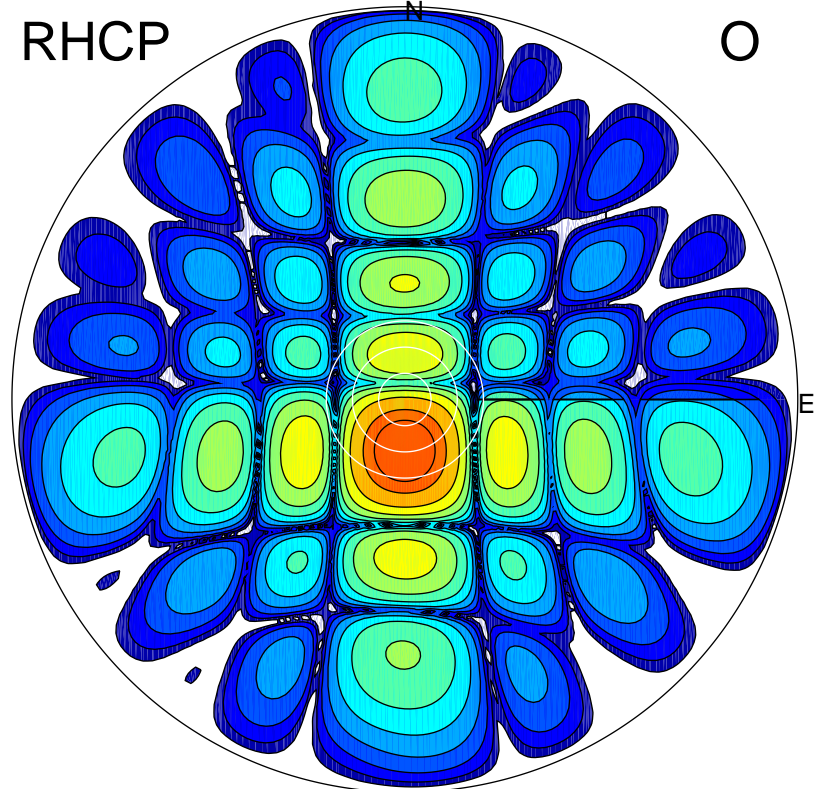
LHCP

X



RHCP

O



ERP 0.6 MW

Peak gain -2.1 dBi at Az 164 Zen 21
RHCP gain 16.1 dBi
N-S peak -3.7 dBi at Zen 15.1
N-S -3 dB beamwidth 11.8 deg.

ERP 155.5 MW

Peak gain 22.4 dBi at Az 179 Zen 12
LHCP gain -8.8 dBi
N-S peak 22.4 dBi at Zen -11.7
N-S -3 dB beamwidth 14.0 deg.