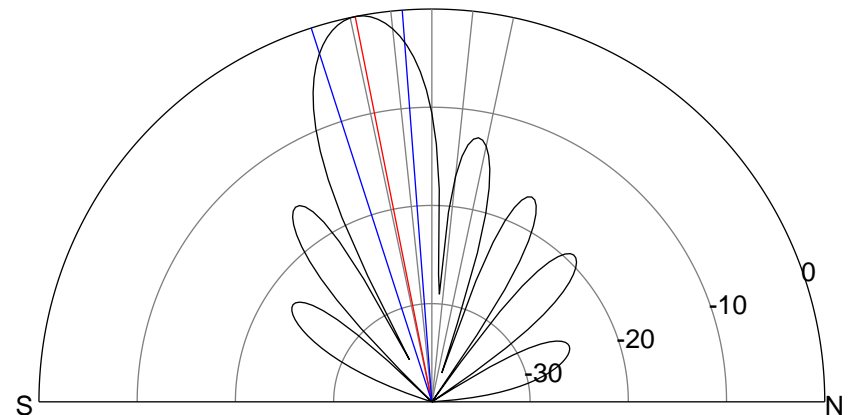
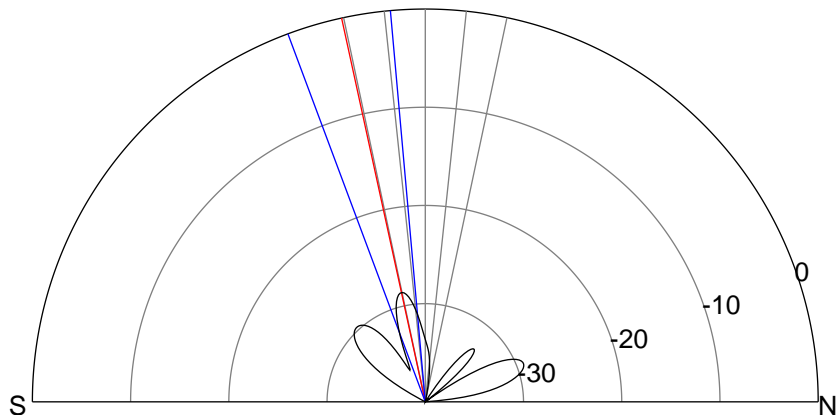
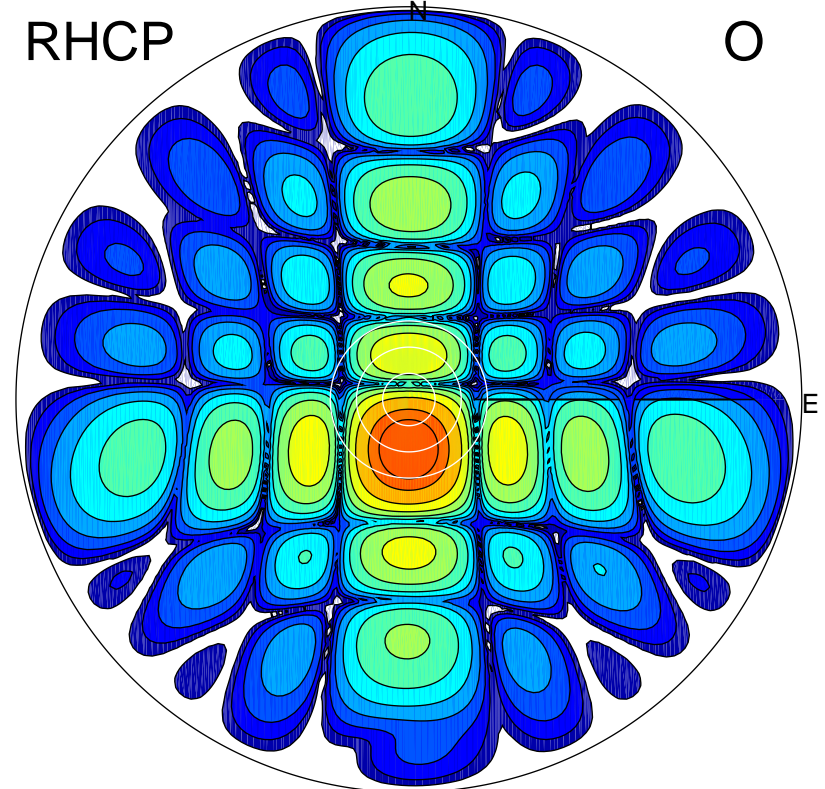
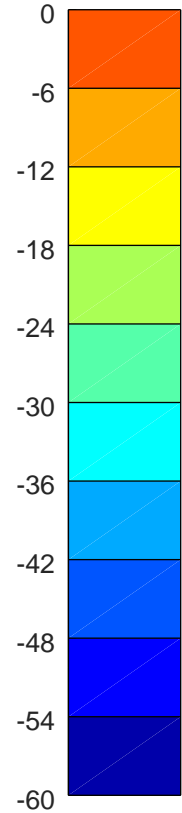
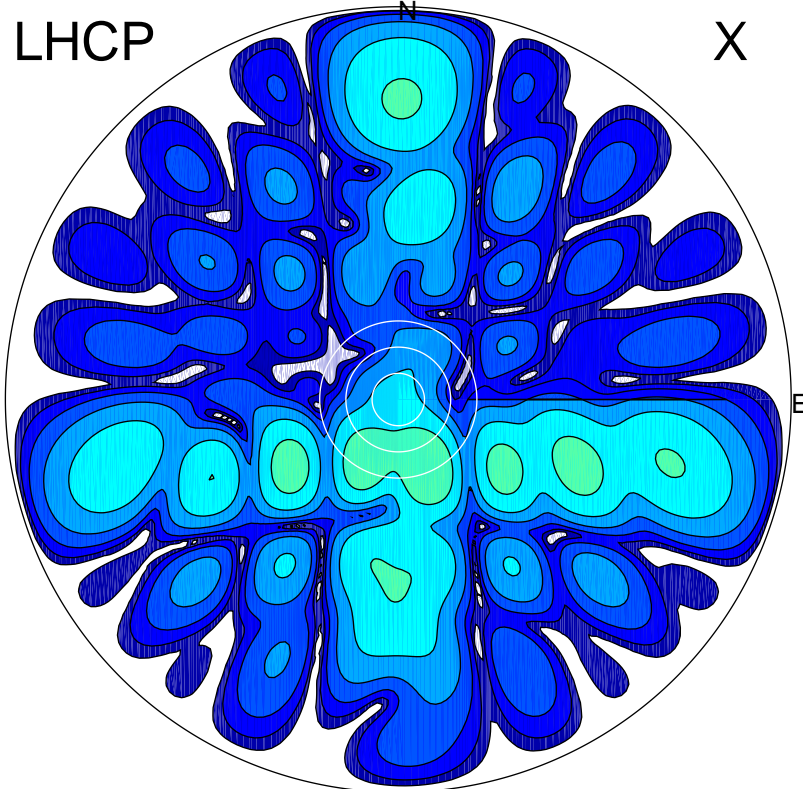


2018-10-16 10:24:16 A2 4.17000000 MHz 900.0 kW



### ERP 0.5 MW

Peak gain -2.6 dBi at Az 157 Zen 17  
RHCP gain 18.6 dBi  
N-S peak -5.9 dBi at Zen -12.3  
N-S -3 dB beamwidth 15.4 deg.

### ERP 166.3 MW

Peak gain 22.7 dBi at Az 181 Zen 11  
LHCP gain -6.1 dBi  
N-S peak 22.7 dBi at Zen -11.2  
N-S -3 dB beamwidth 13.6 deg.