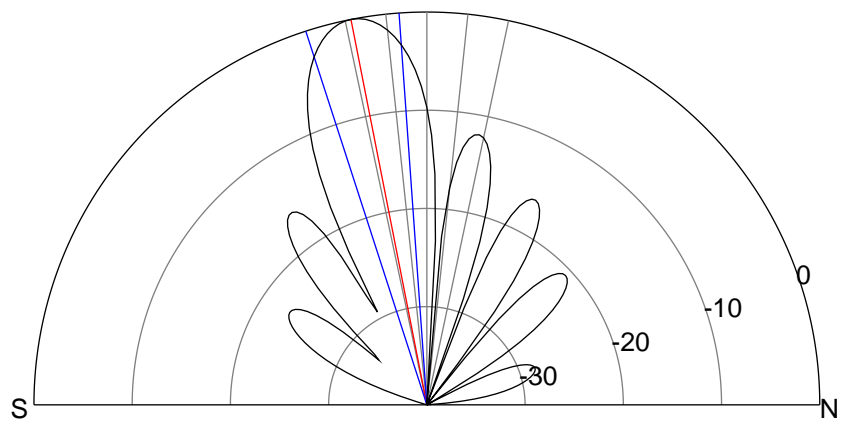
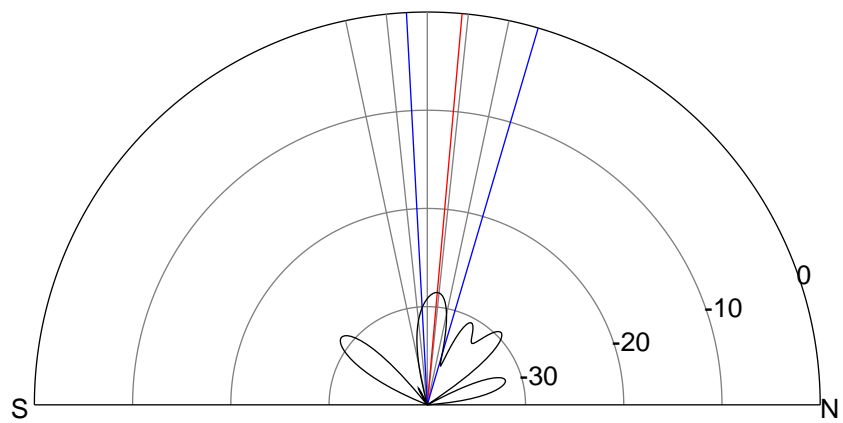
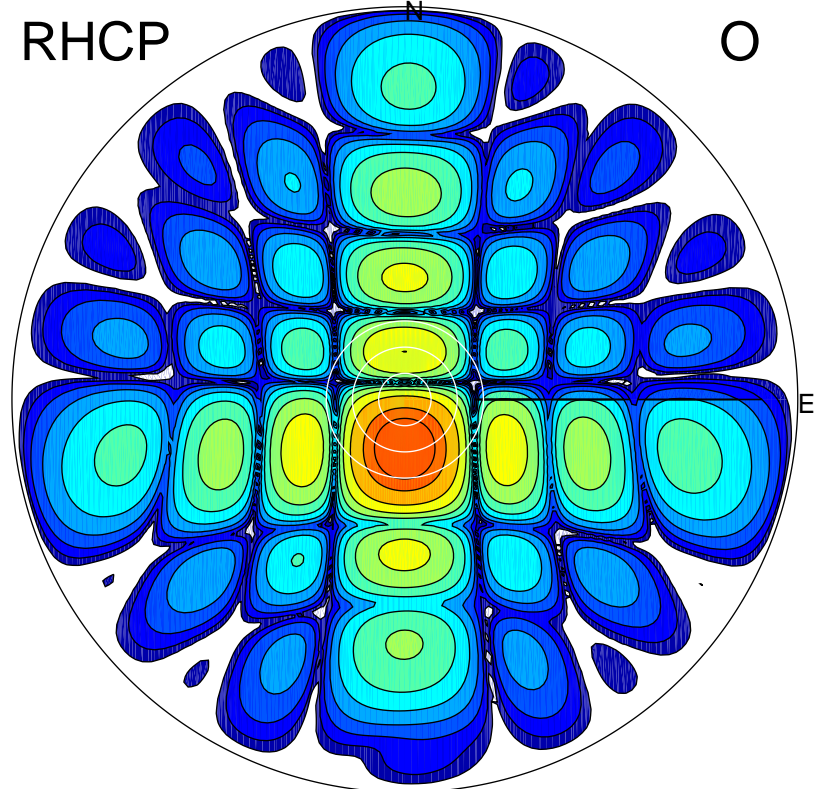
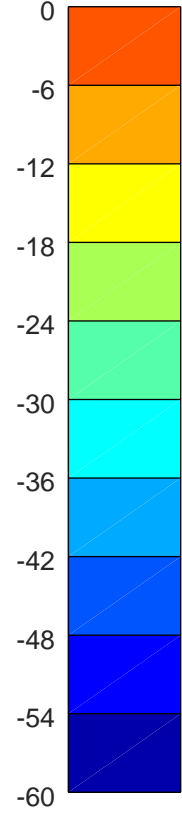
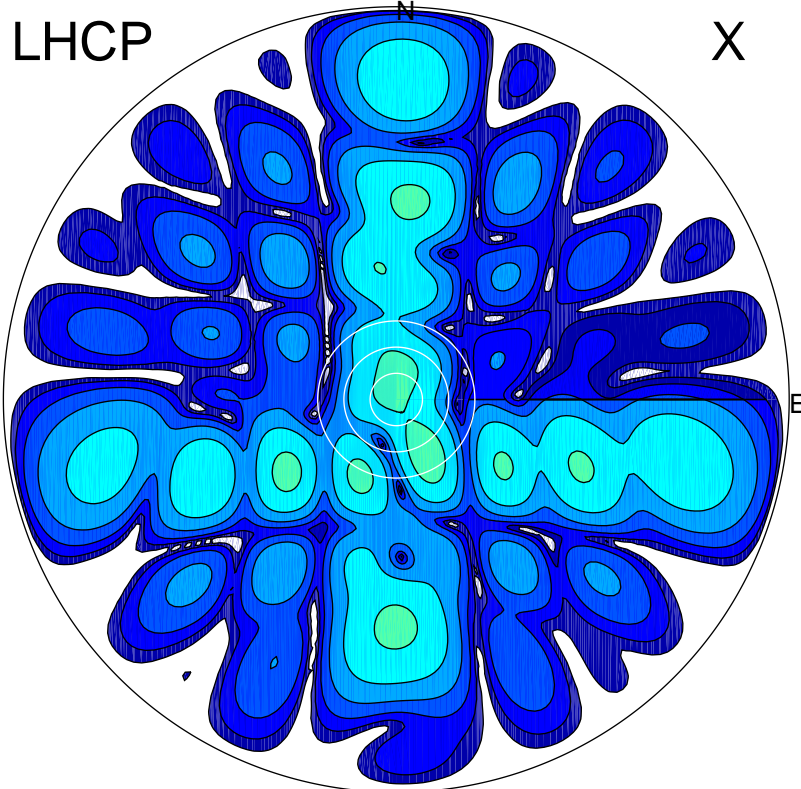


2018-10-16 10:18:16 A2 4.07000000 MHz 880.0 kW



ERP 0.3 MW

Peak gain -5.1 dBi at Az 152 Zen 15
RHCP gain 19.1 dBi
N-S peak -6.1 dBi at Zen 5.1
N-S -3 dB beamwidth 19.4 deg.

ERP 155.1 MW

Peak gain 22.5 dBi at Az 181 Zen 11
LHCP gain -13.0 dBi
N-S peak 22.5 dBi at Zen -11.1
N-S -3 dB beamwidth 13.9 deg.