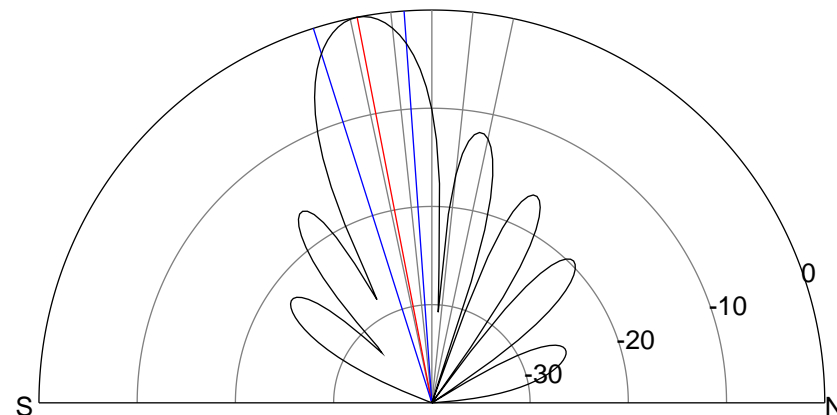
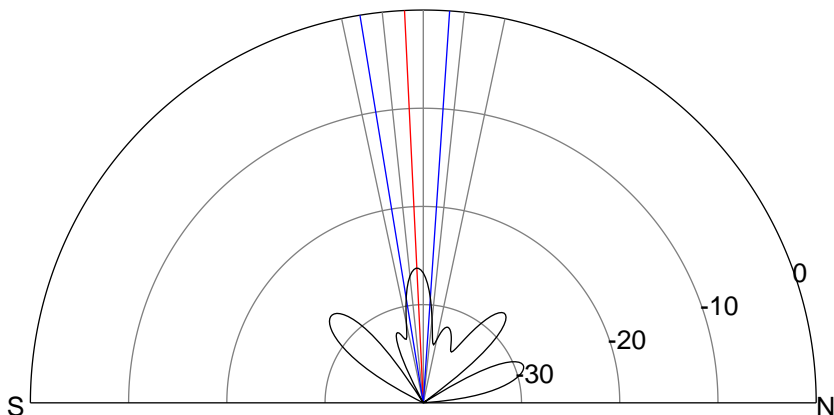
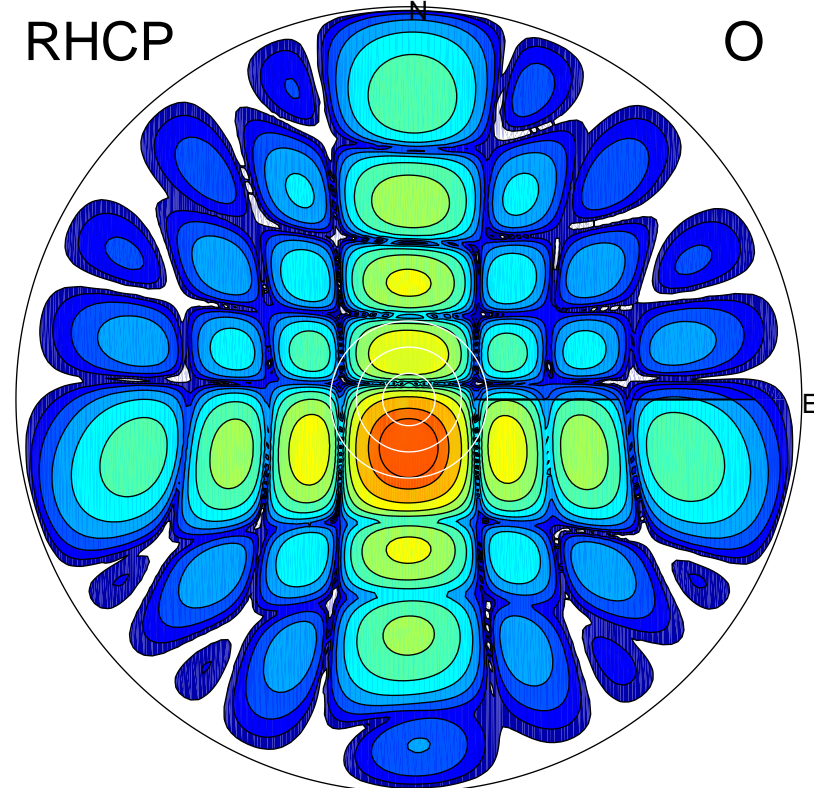
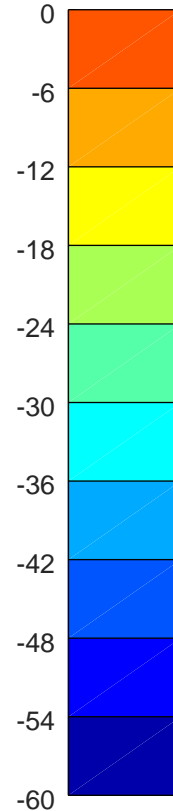
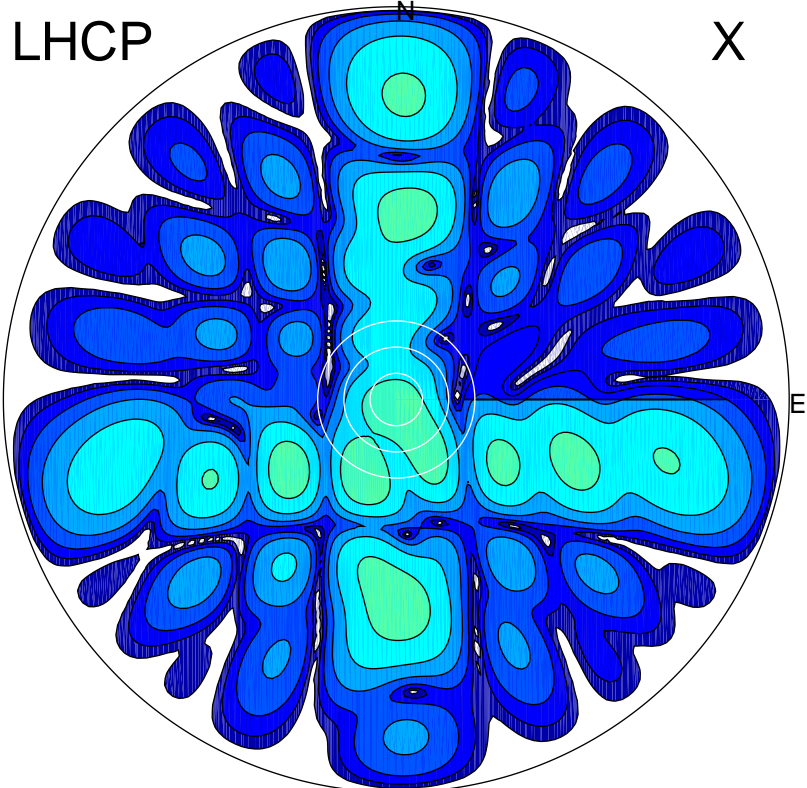


2018-10-16 10:12:16 A2 4.18000000 MHz 893.0 kW



### ERP 0.5 MW

Peak gain -2.7 dBi at Az 203 Zen 19  
RHCP gain 16.5 dBi  
N-S peak -3.6 dBi at Zen -2.7  
N-S -3 dB beamwidth 13.1 deg.

### ERP 165.1 MW

Peak gain 22.7 dBi at Az 181 Zen 11  
LHCP gain -8.3 dBi  
N-S peak 22.7 dBi at Zen -11.0  
N-S -3 dB beamwidth 13.5 deg.