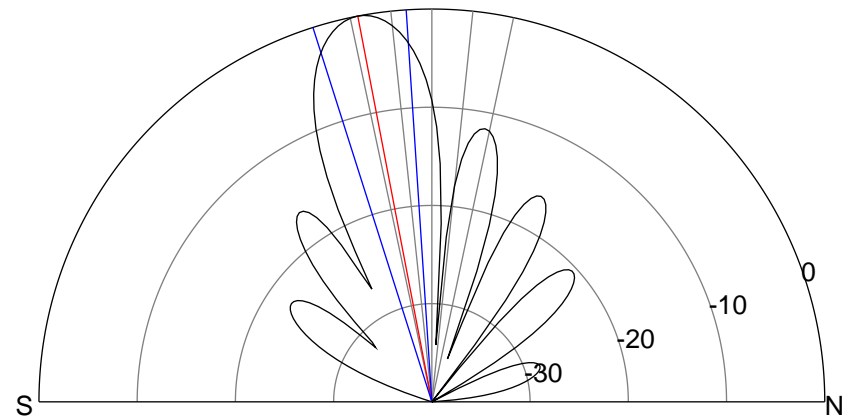
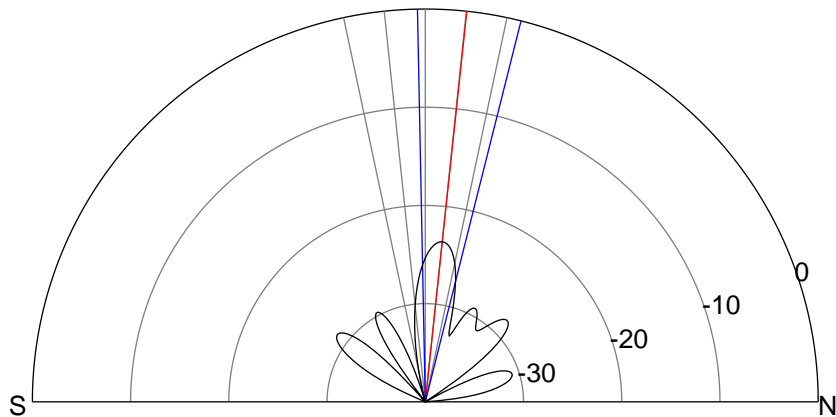
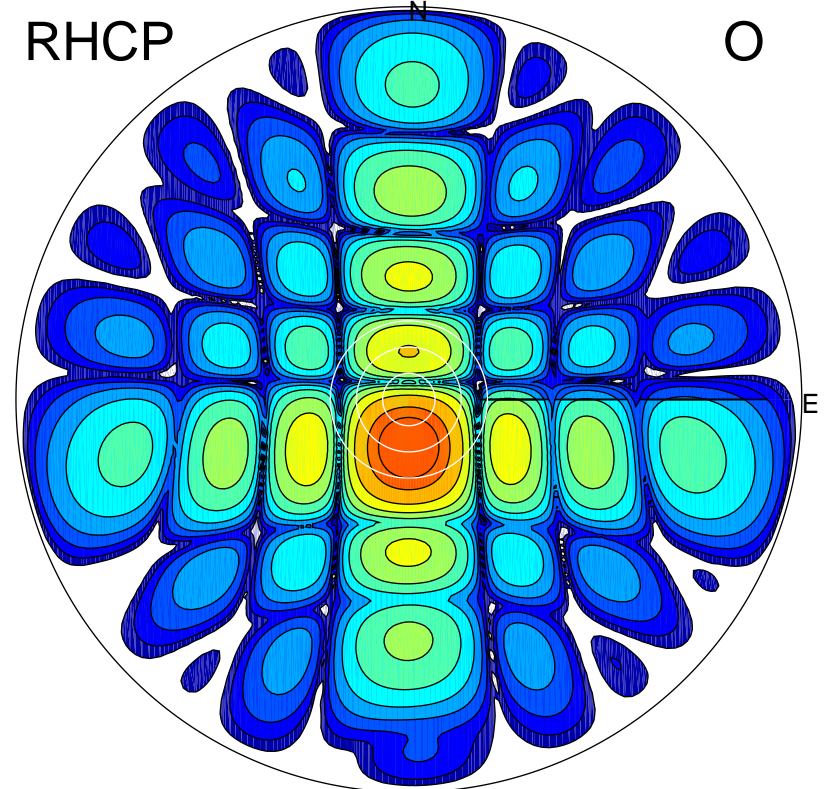
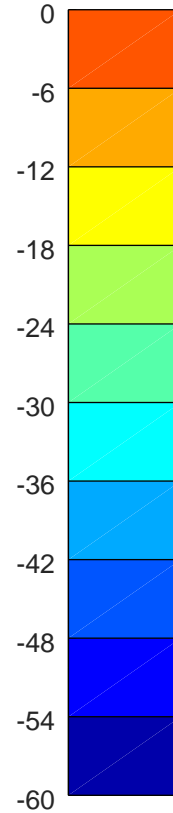
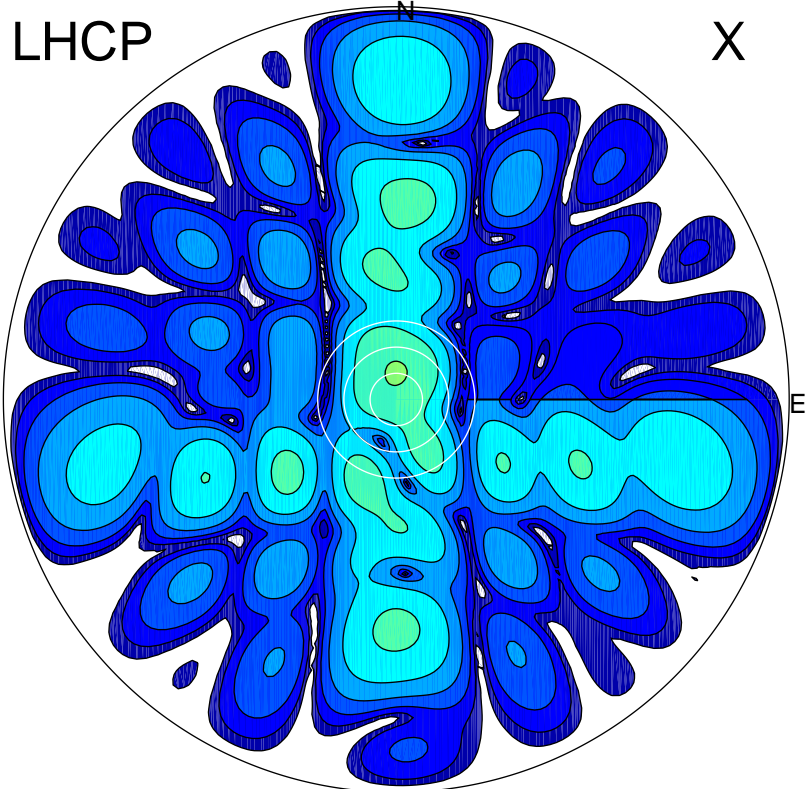


2018-10-16 10:06:16 A2 4.08000000 MHz 889.0 kW



### ERP 0.7 MW

Peak gain -1.2 dBi at Az 1 Zen 6  
RHCP gain 4.6 dBi  
N-S peak -1.2 dBi at Zen 6.1  
N-S -3 dB beamwidth 15.2 deg.

### ERP 156.3 MW

Peak gain 22.5 dBi at Az 181 Zen 11  
LHCP gain -13.8 dBi  
N-S peak 22.5 dBi at Zen -10.9  
N-S -3 dB beamwidth 13.9 deg.