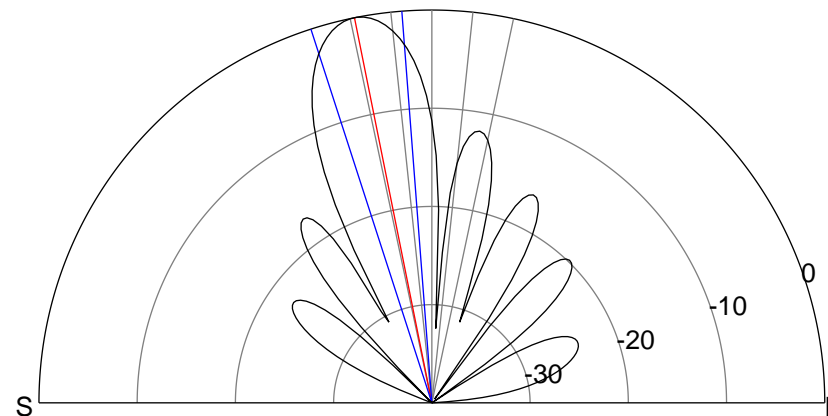
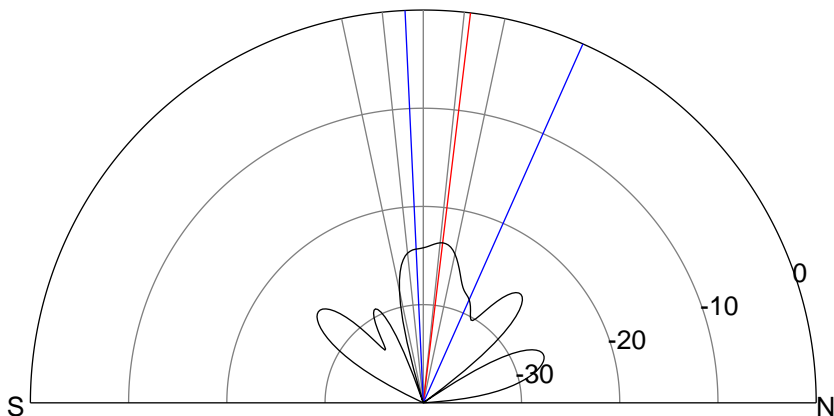
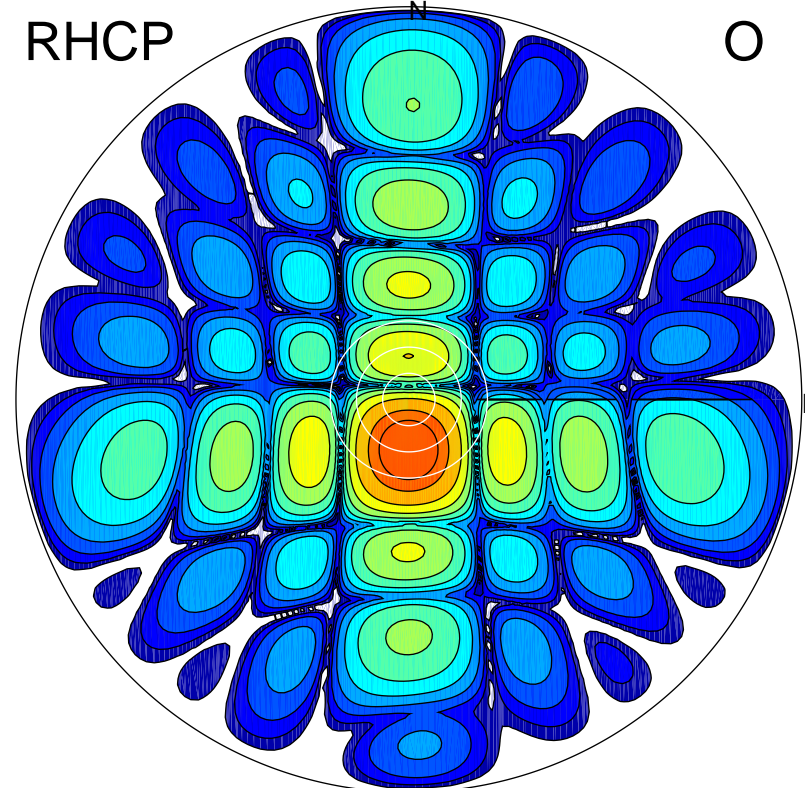
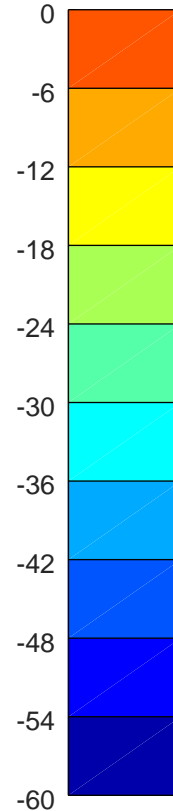
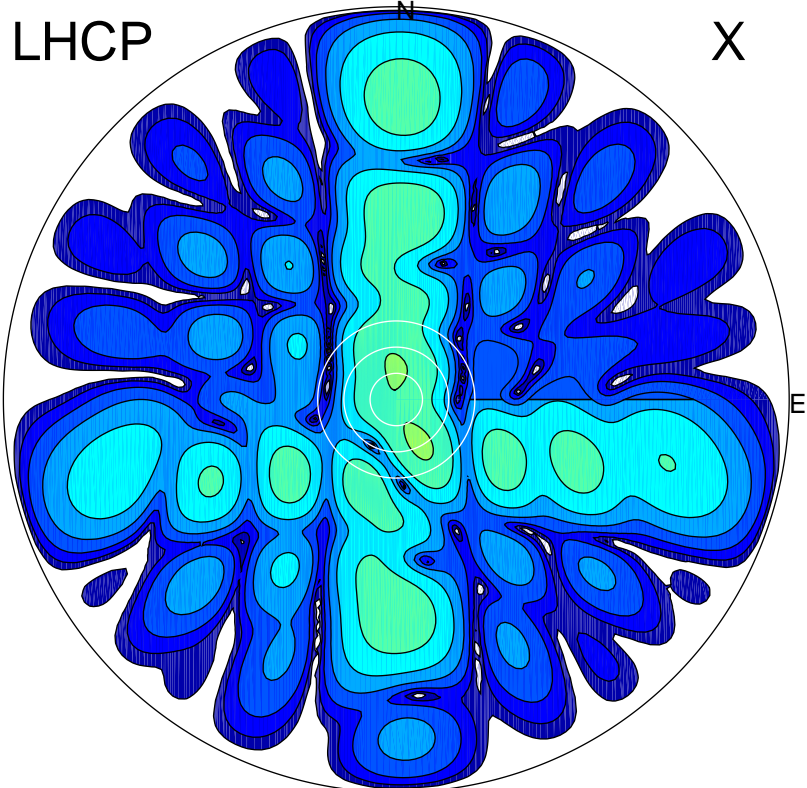


2018-10-16 10:00:16 A2 4.19000000 MHz 902.0 kW



ERP 0.8 MW

Peak gain -0.5 dBi at Az 152 Zen 11
RHCP gain 20.7 dBi
N-S peak -1.0 dBi at Zen 6.9
N-S -3 dB beamwidth 26.6 deg.

ERP 165.1 MW

Peak gain 22.6 dBi at Az 180 Zen 11
LHCP gain -4.7 dBi
N-S peak 22.6 dBi at Zen -11.4
N-S -3 dB beamwidth 13.5 deg.