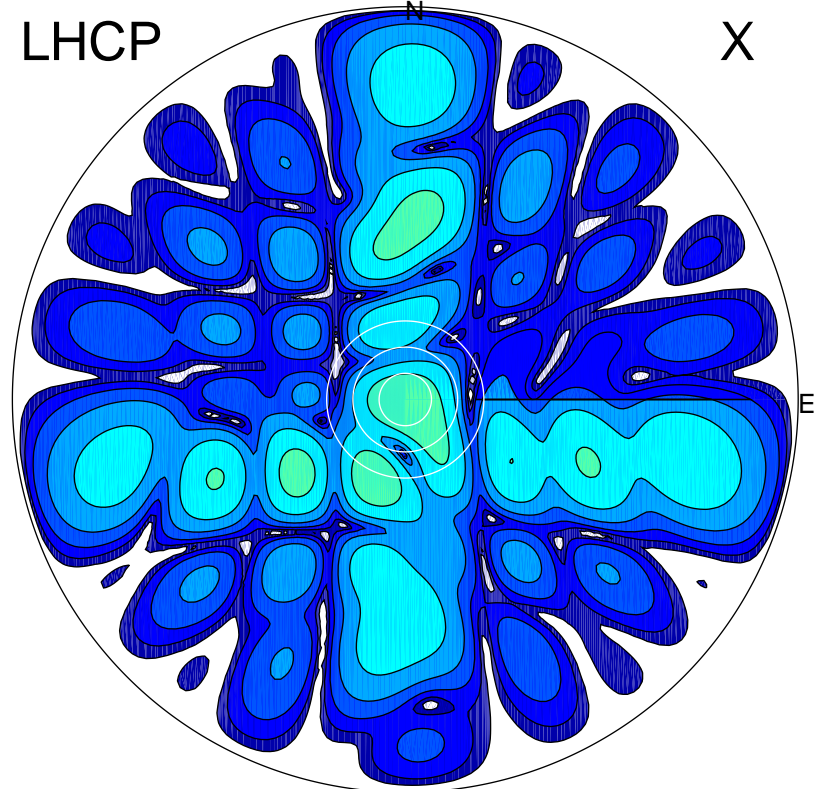
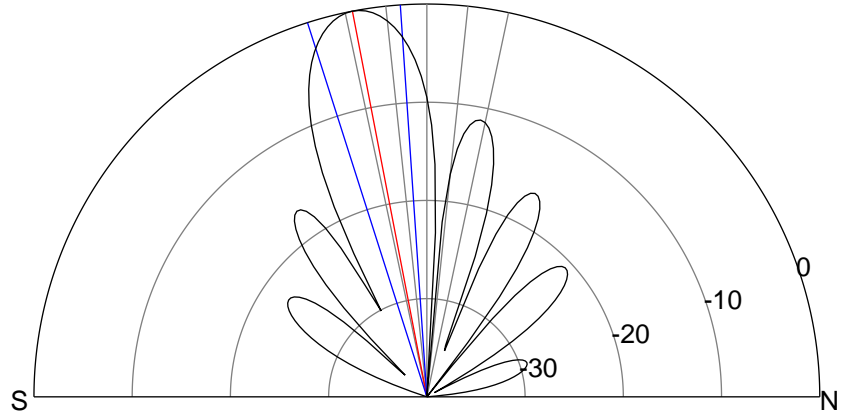
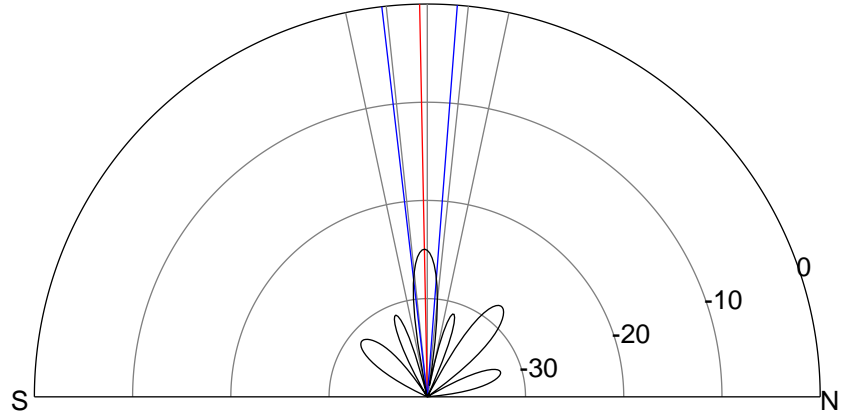
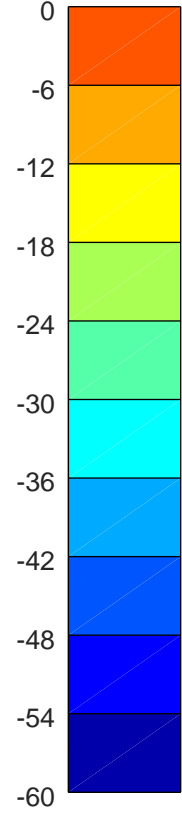
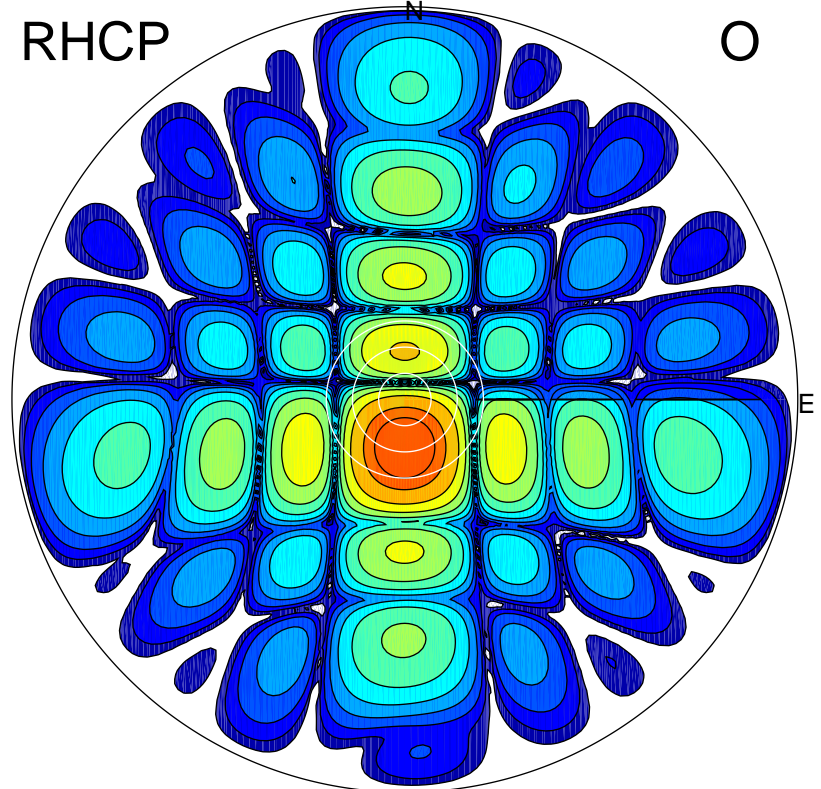


2018-10-16 09:54:16 A2 4.09000000 MHz 894.0 kW

LHCP



RHCP



ERP 0.5 MW

Peak gain -2.5 dBi at Az 178 Zen 1
RHCP gain 15.1 dBi
N-S peak -2.5 dBi at Zen -1.1
N-S -3 dB beamwidth 11.0 deg.

ERP 158.7 MW

Peak gain 22.5 dBi at Az 181 Zen 11
LHCP gain -16.5 dBi
N-S peak 22.5 dBi at Zen -10.9
N-S -3 dB beamwidth 13.8 deg.