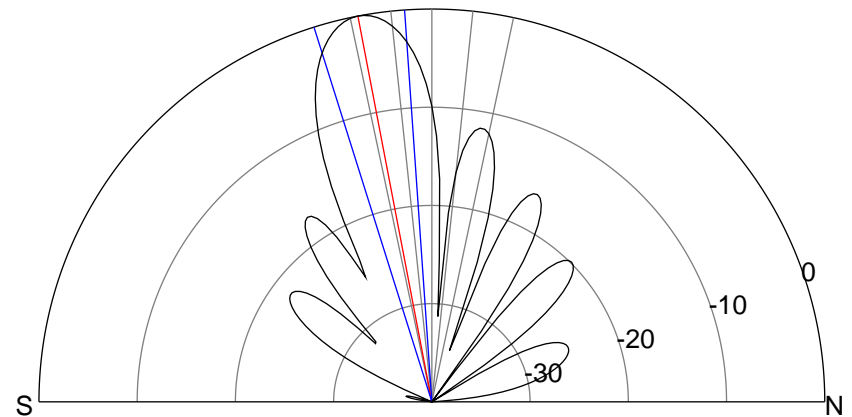
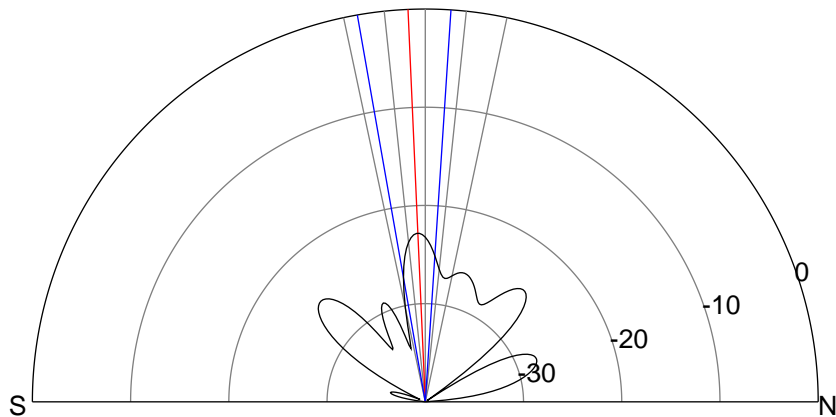
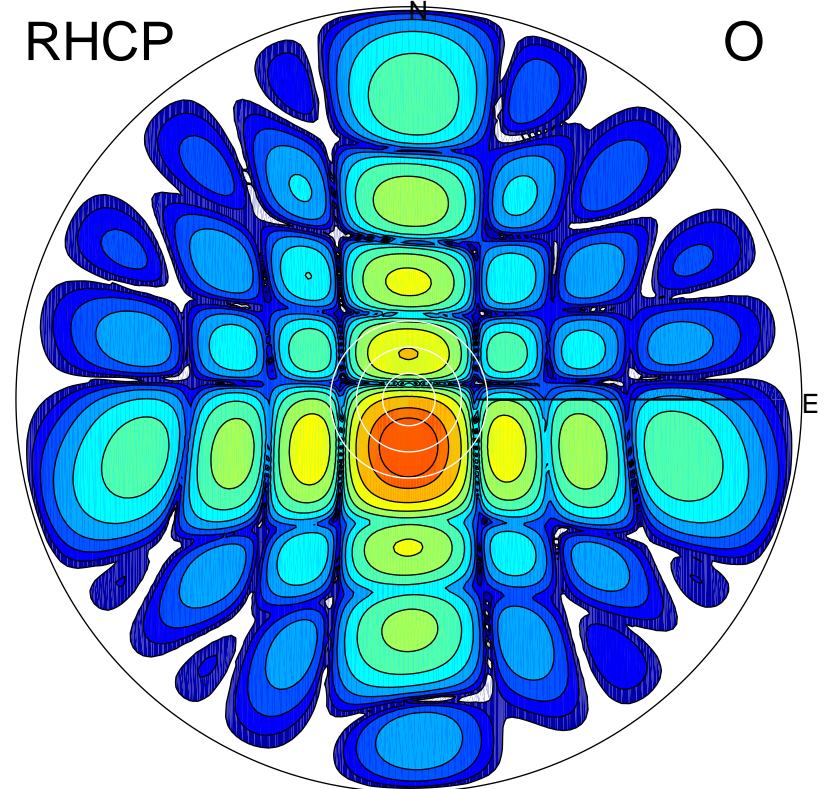
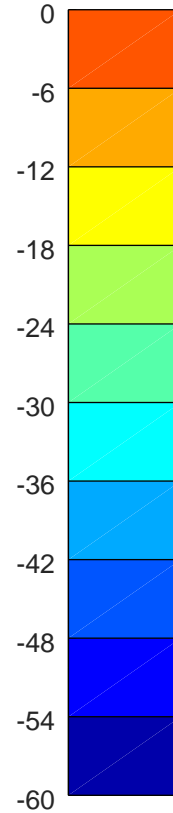
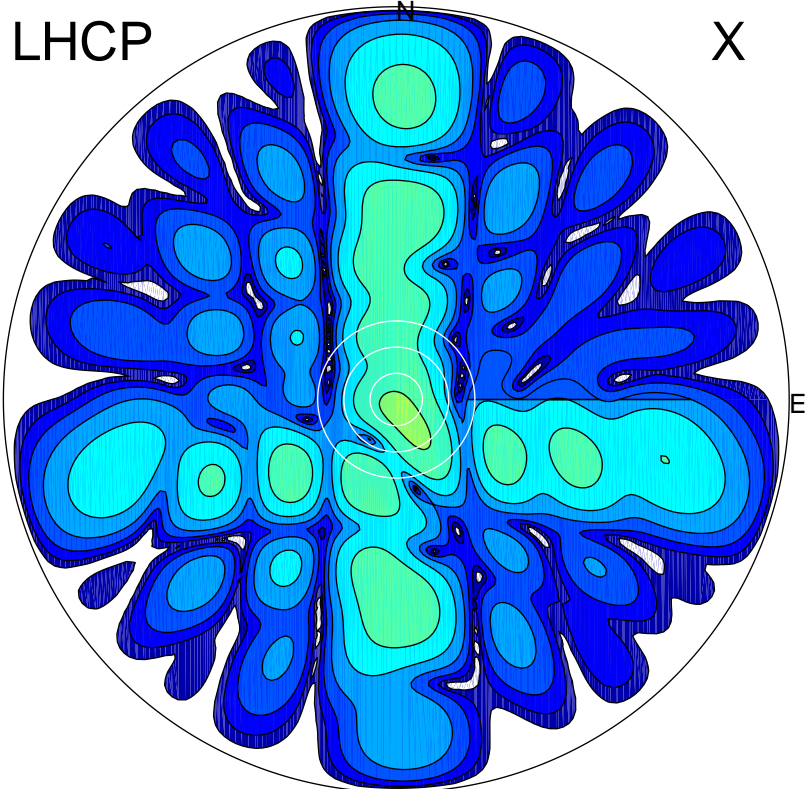


2018-10-16 09:48:16 A2 4.20000000 MHz 901.0 kW



ERP 0.9 MW

Peak gain -0.1 dBi at Az 157 Zen 4
RHCP gain 18.9 dBi
N-S peak -0.2 dBi at Zen -2.5
N-S -3 dB beamwidth 13.7 deg.

ERP 165.8 MW

Peak gain 22.6 dBi at Az 181 Zen 11
LHCP gain -6.3 dBi
N-S peak 22.6 dBi at Zen -10.9
N-S -3 dB beamwidth 13.5 deg.