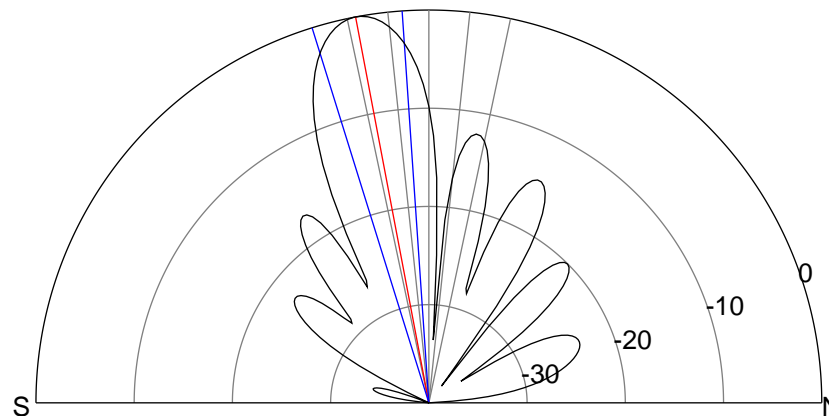
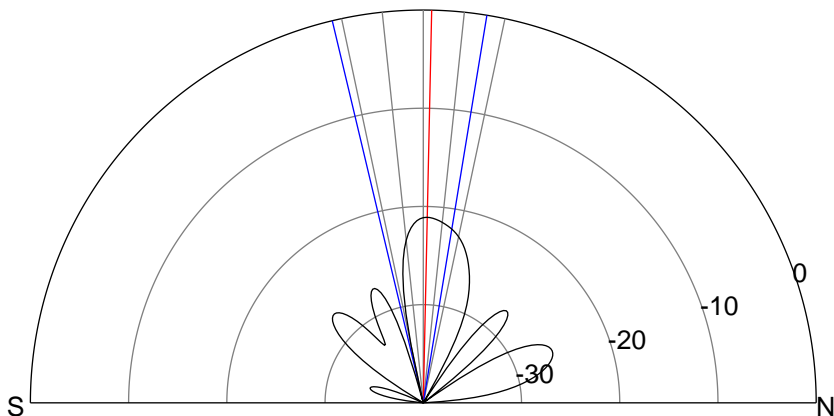
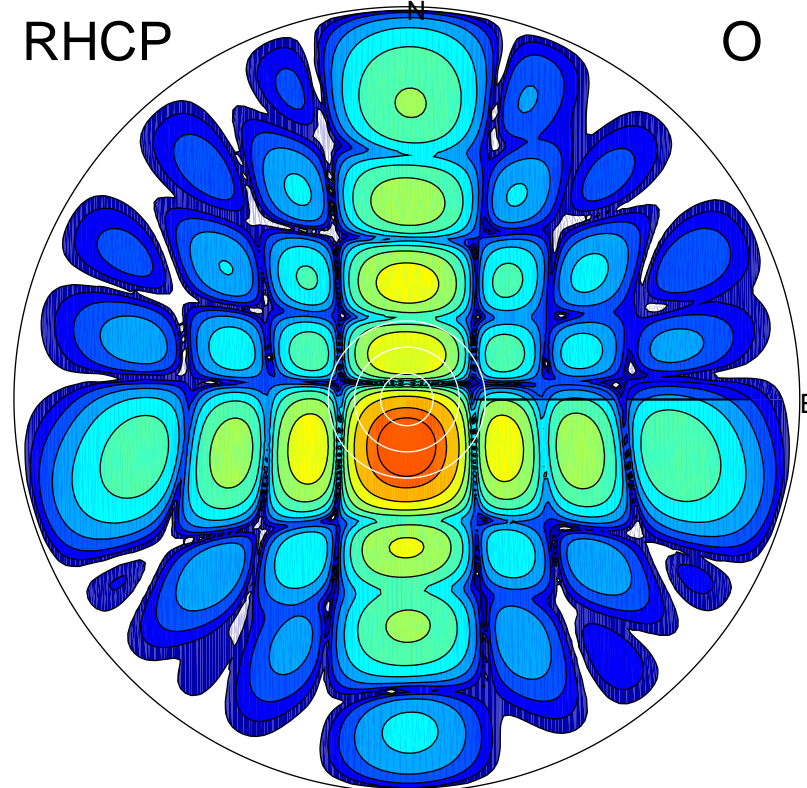
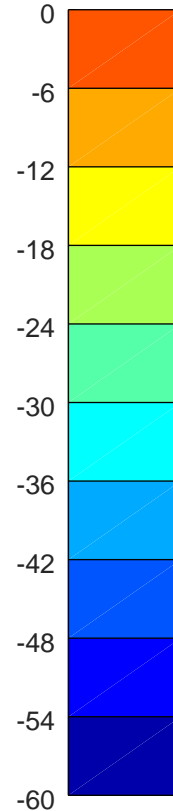
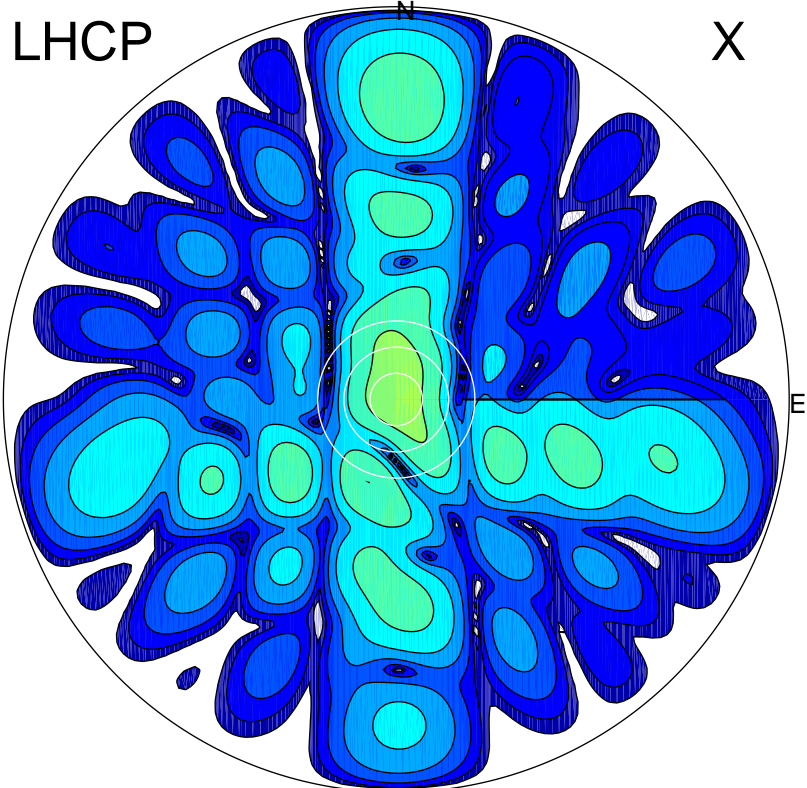


2018-10-16 09:36:16 A2 4.21000000 MHz 898.0 kW



ERP 1.3 MW

Peak gain 1.6 dBi at Az 331 Zen 1
RHCP gain 10.3 dBi
N-S peak 1.6 dBi at Zen 1.2
N-S -3 dB beamwidth 22.7 deg.

ERP 165.7 MW

Peak gain 22.7 dBi at Az 181 Zen 11
LHCP gain -8.6 dBi
N-S peak 22.7 dBi at Zen -10.7
N-S -3 dB beamwidth 13.4 deg.