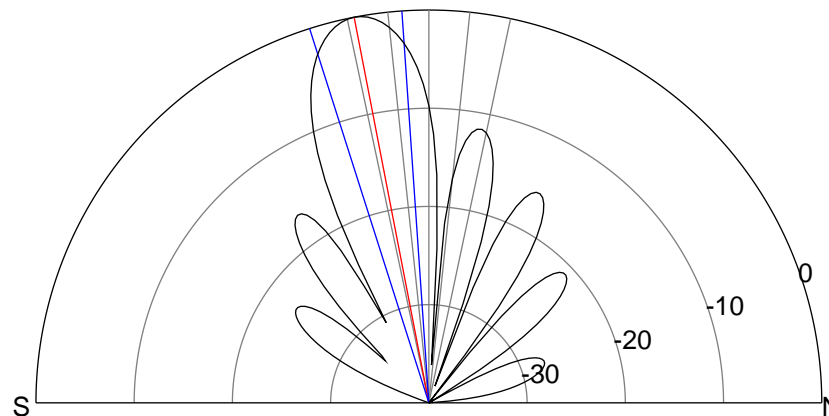
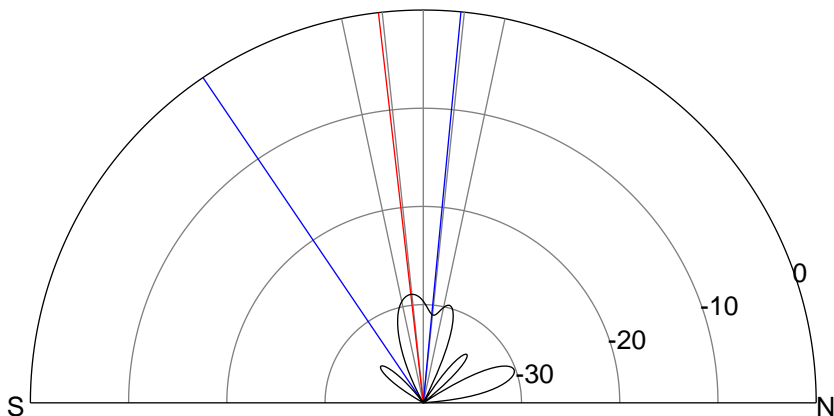
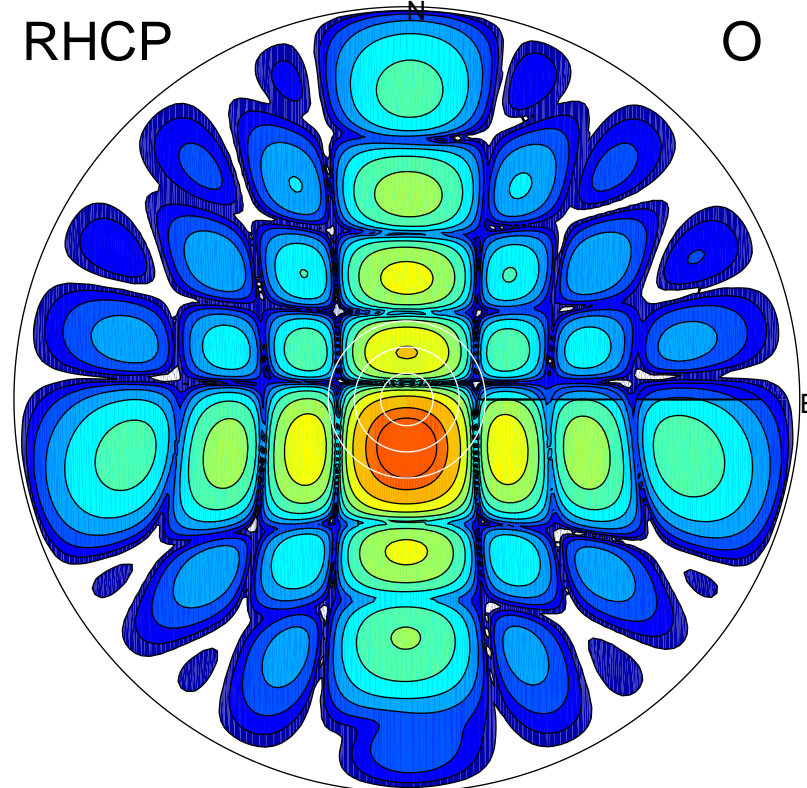
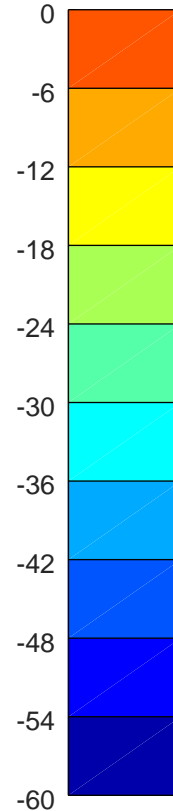
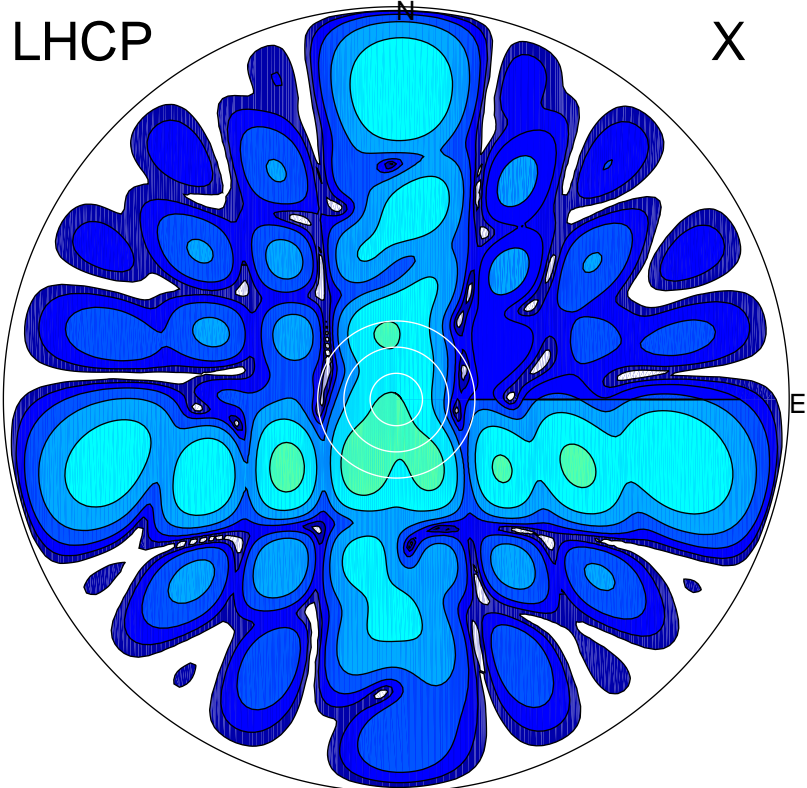


2018-10-16 09:30:16 A2 4.11000000 MHz 888.0 kW



### ERP 0.4 MW

Peak gain -3.6 dBi at Az 208 Zen 16  
RHCP gain 18.4 dBi  
N-S peak -6.3 dBi at Zen -6.6  
N-S -3 dB beamwidth 39.6 deg.

### ERP 159.7 MW

Peak gain 22.5 dBi at Az 180 Zen 11  
LHCP gain -6.7 dBi  
N-S peak 22.5 dBi at Zen -11.0  
N-S -3 dB beamwidth 13.7 deg.