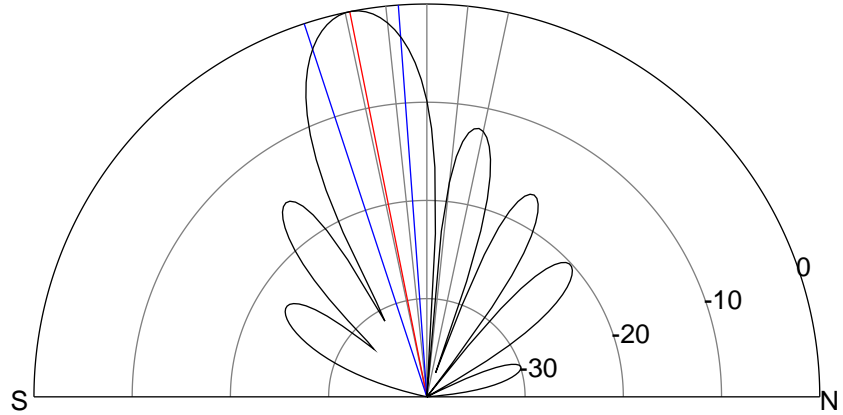
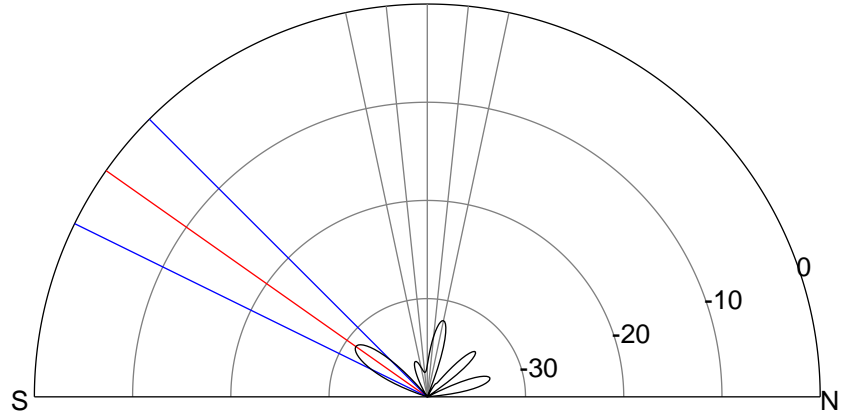
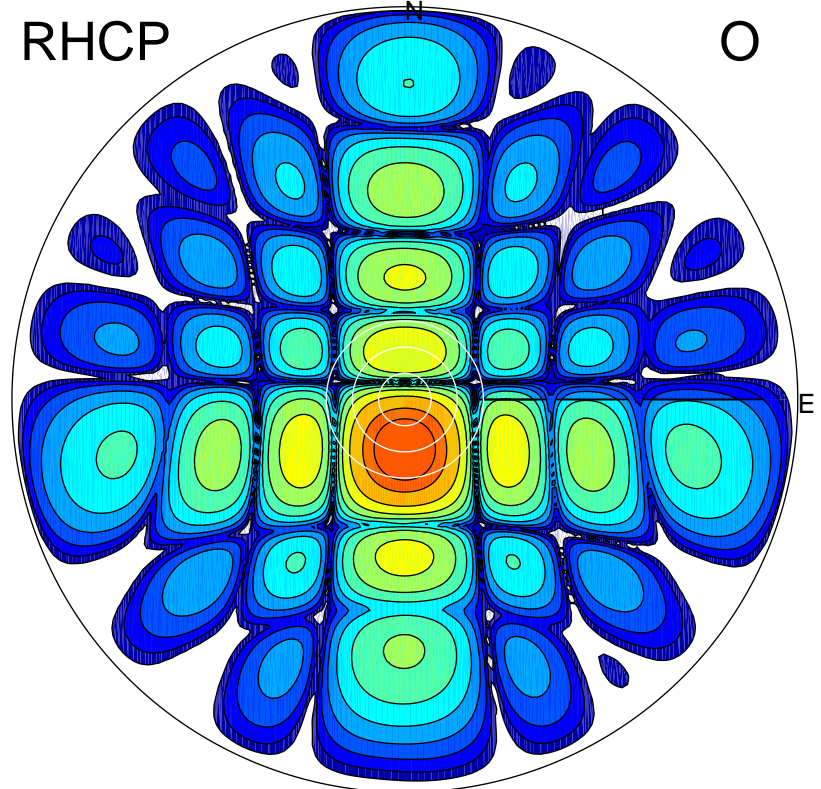
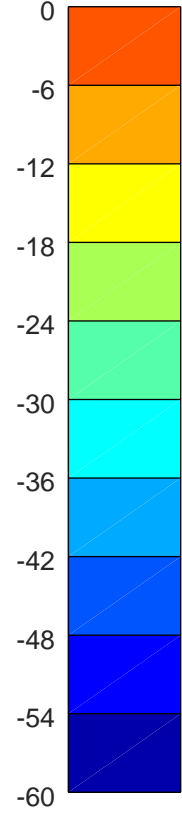
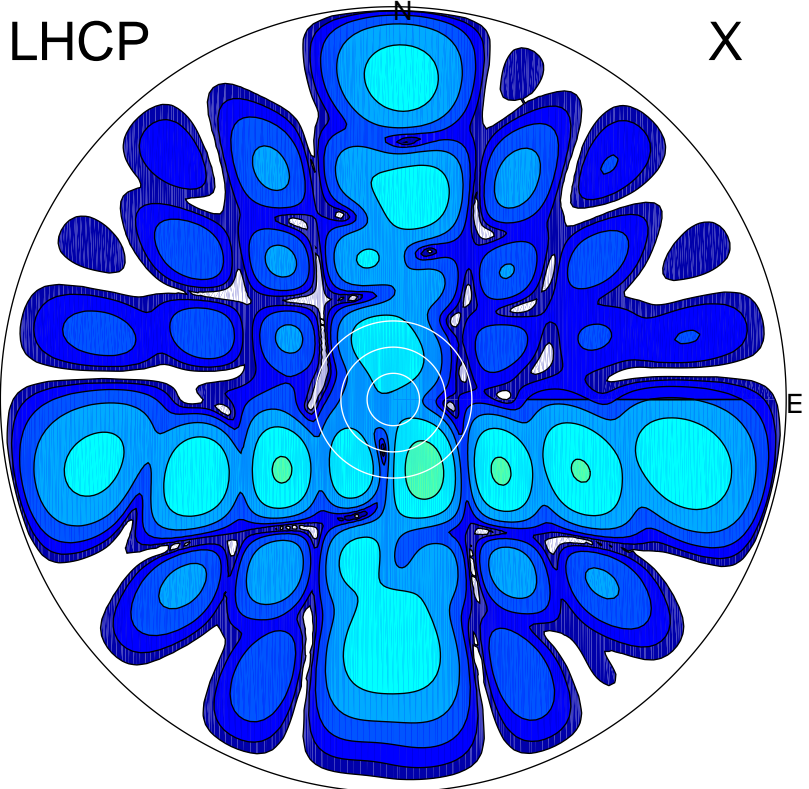


2018-10-16 09:24:16 A2 4.02000000 MHz 877.0 kW



### ERP 0.3 MW

Peak gain -4.8 dBi at Az 156 Zen 18  
RHCP gain 17.7 dBi  
N-S peak -8.7 dBi at Zen -54.8  
N-S -3 dB beamwidth 18.8 deg.

### ERP 151.4 MW

Peak gain 22.4 dBi at Az 182 Zen 11  
LHCP gain -16.1 dBi  
N-S peak 22.4 dBi at Zen -11.3  
N-S -3 dB beamwidth 14.0 deg.