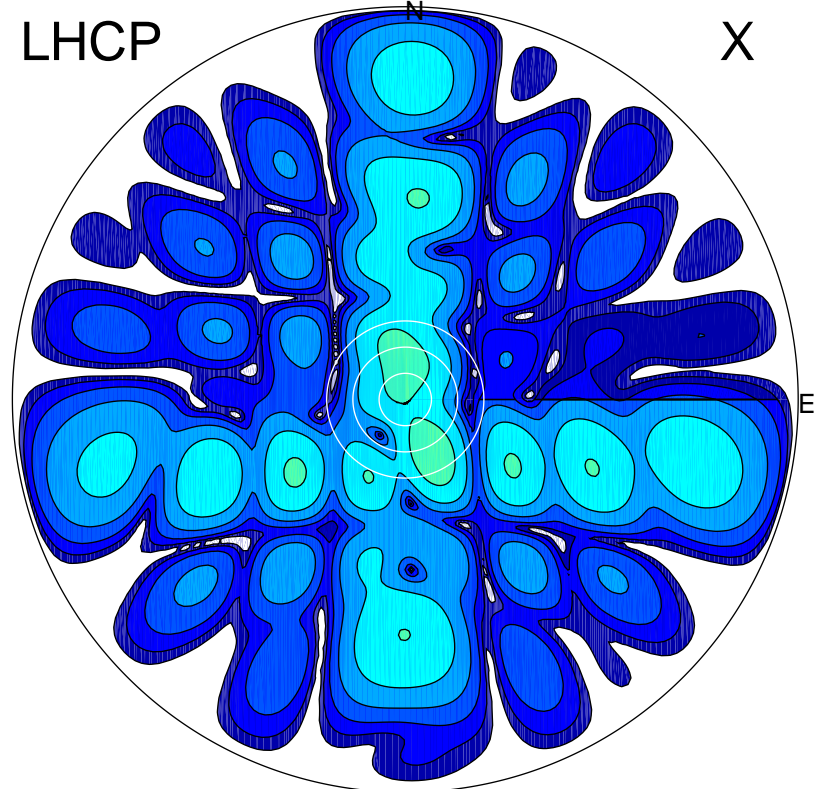


2018-10-16 09:18:16 A2 4.03000000 MHz 887.0 kW

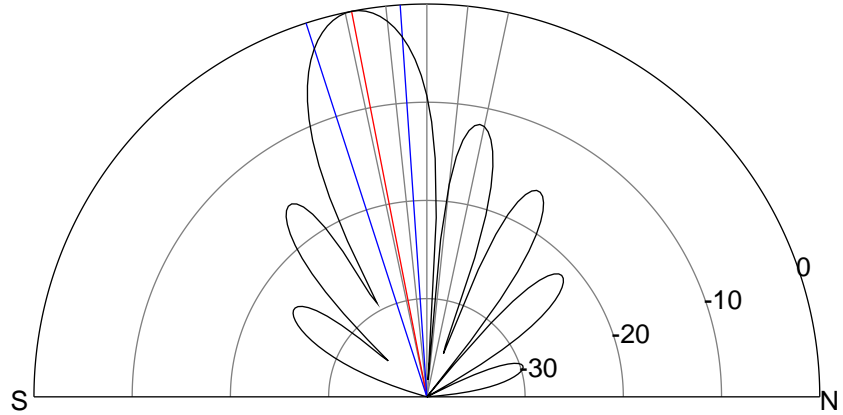
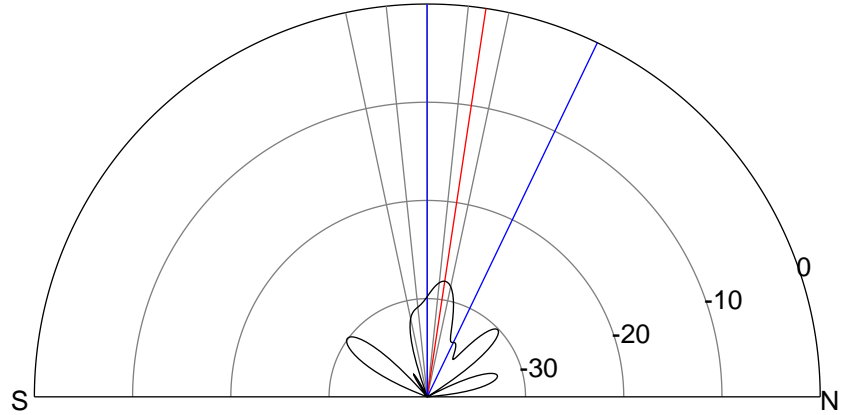
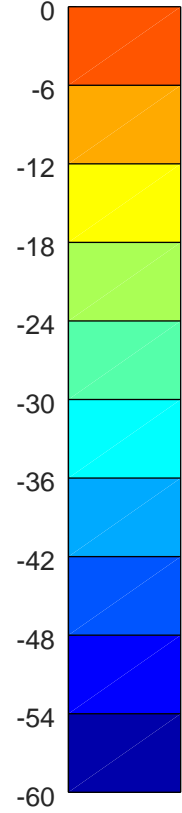
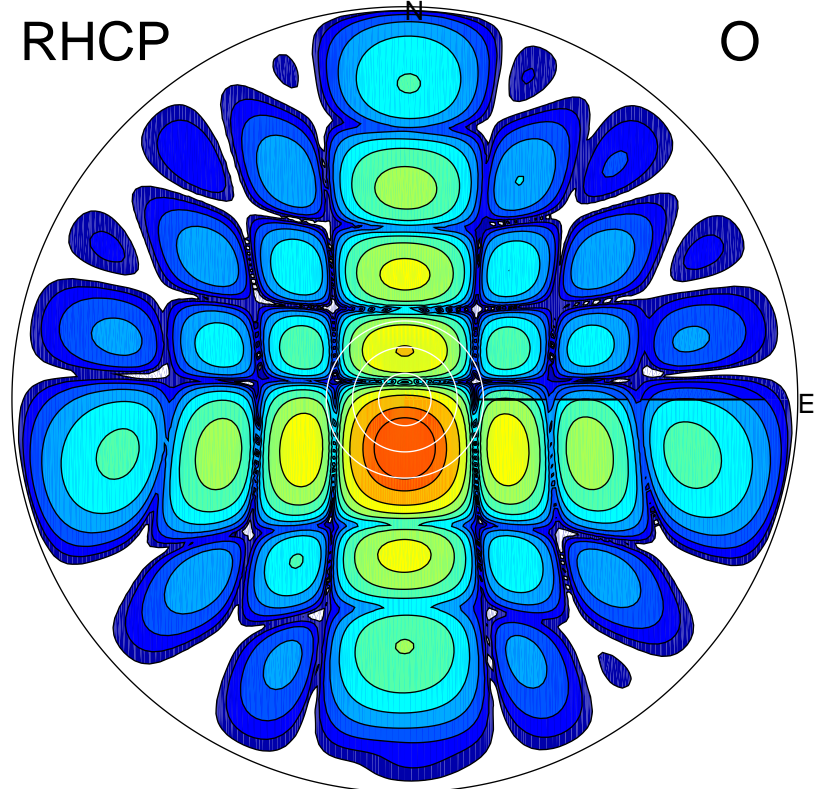
LHCP

X



RHCP

O



ERP 0.3 MW

Peak gain -4.5 dBi at Az 153 Zen 14
RHCP gain 19.8 dBi
N-S peak -5.7 dBi at Zen 8.6
N-S -3 dB beamwidth 25.7 deg.

ERP 153.4 MW

Peak gain 22.4 dBi at Az 182 Zen 11
LHCP gain -9.8 dBi
N-S peak 22.4 dBi at Zen -11.0
N-S -3 dB beamwidth 14.0 deg.