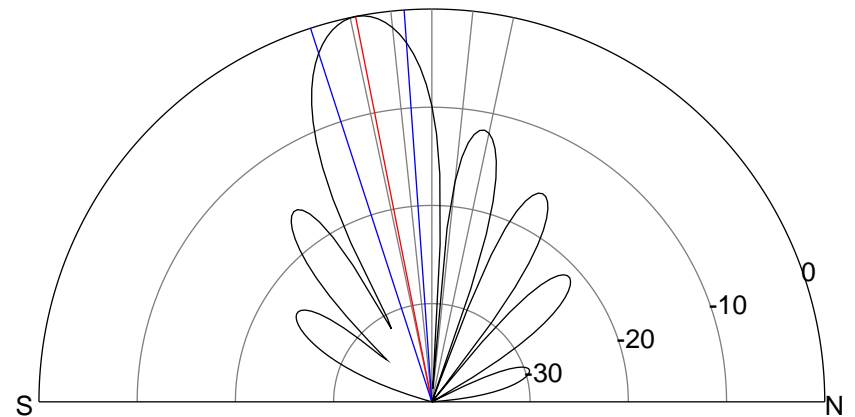
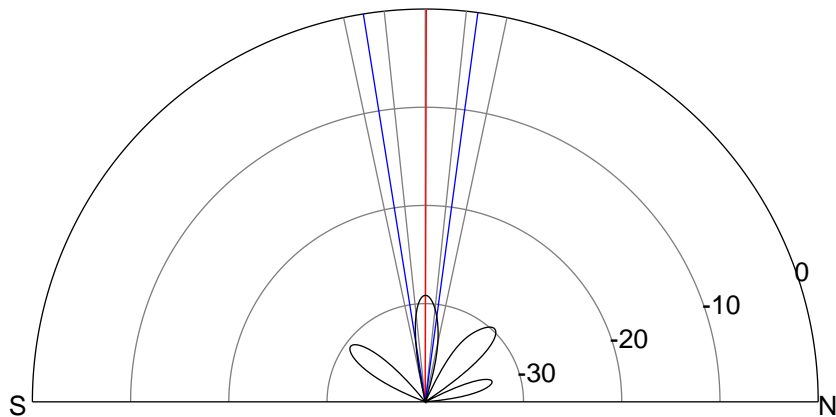
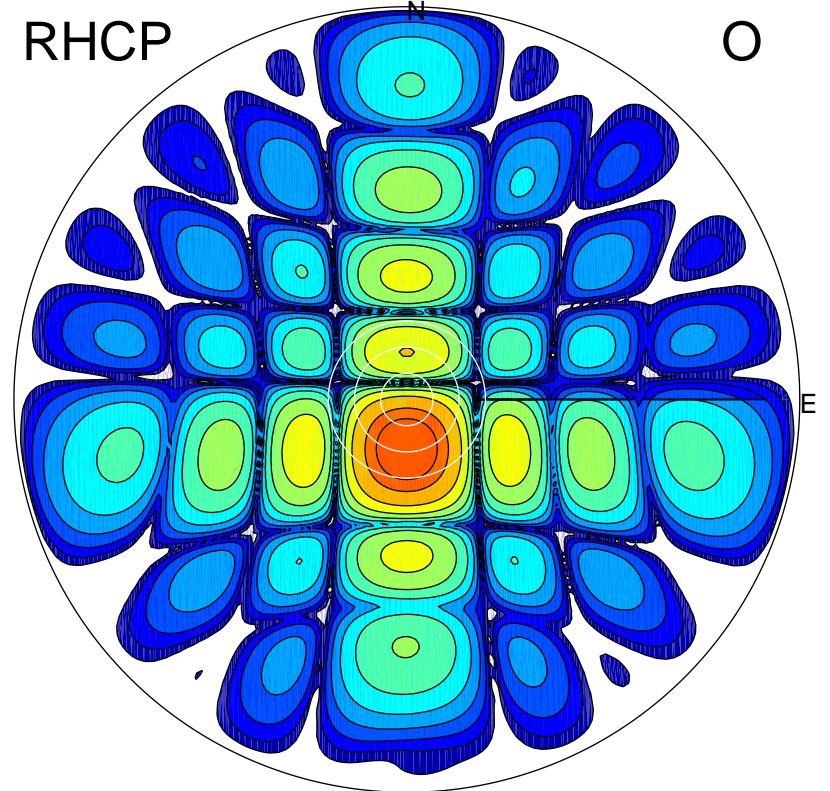
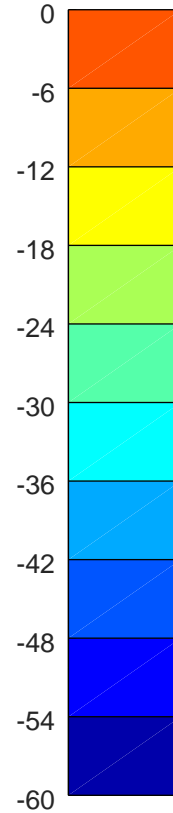
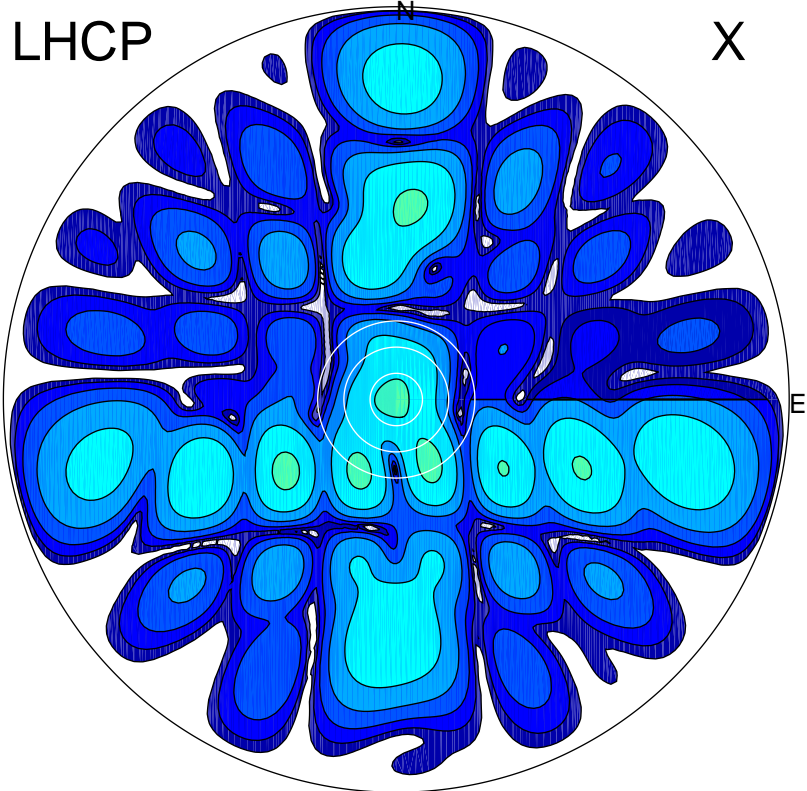


2018-10-16 09:12:16 A2 4.04000000 MHz 891.0 kW



ERP 0.2 MW

Peak gain -6.3 dBi at Az 237 Zen 30
RHCP gain 6.9 dBi
N-S peak -6.7 dBi at Zen 0.2
N-S -3 dB beamwidth 16.8 deg.

ERP 155.3 MW

Peak gain 22.4 dBi at Az 180 Zen 11
LHCP gain -14.3 dBi
N-S peak 22.4 dBi at Zen -11.2
N-S -3 dB beamwidth 13.9 deg.