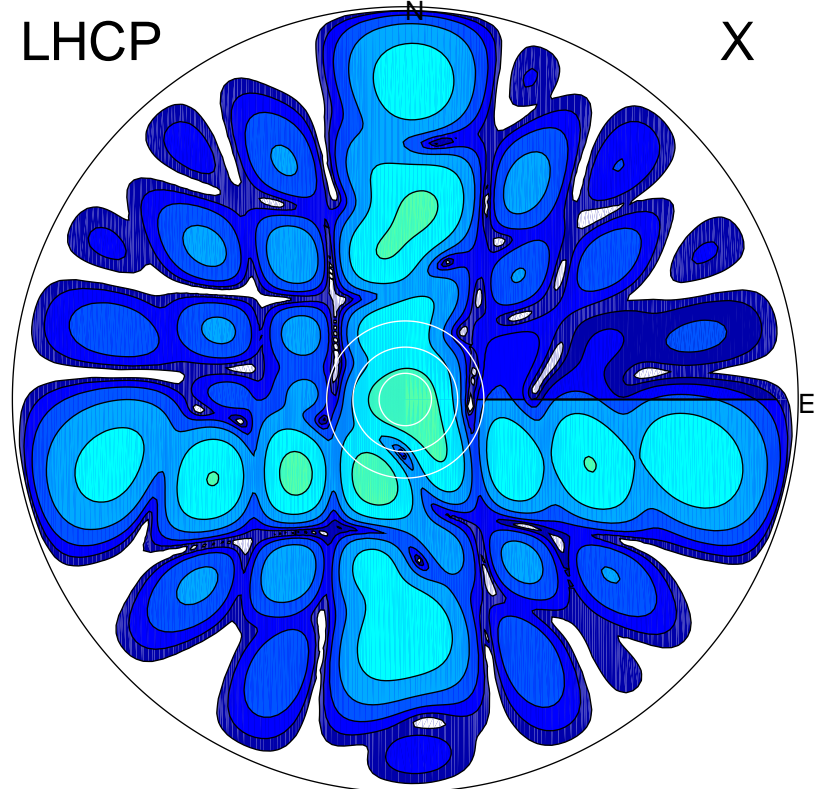


2018-10-16 09:06:16 A2 4.05000000 MHz 901.0 kW

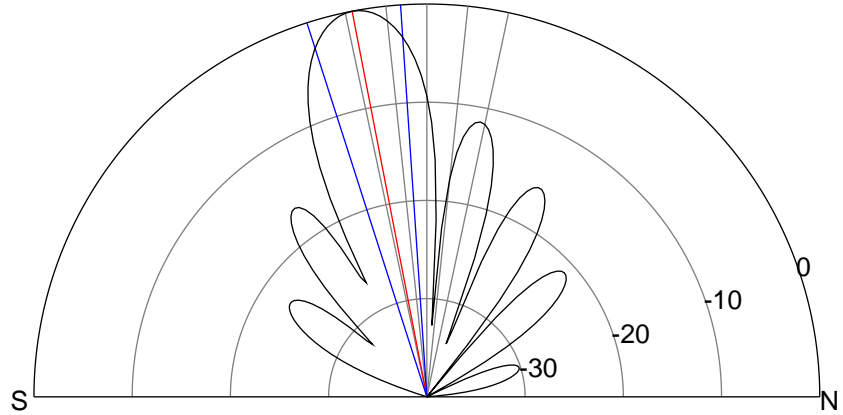
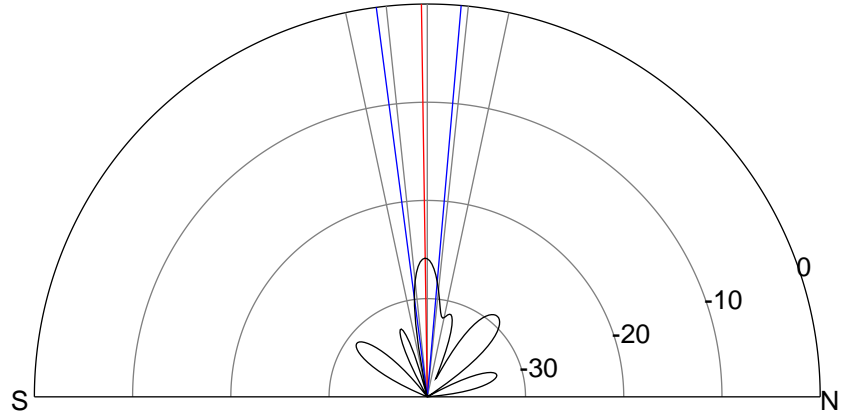
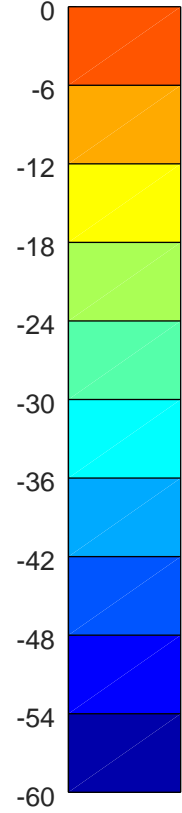
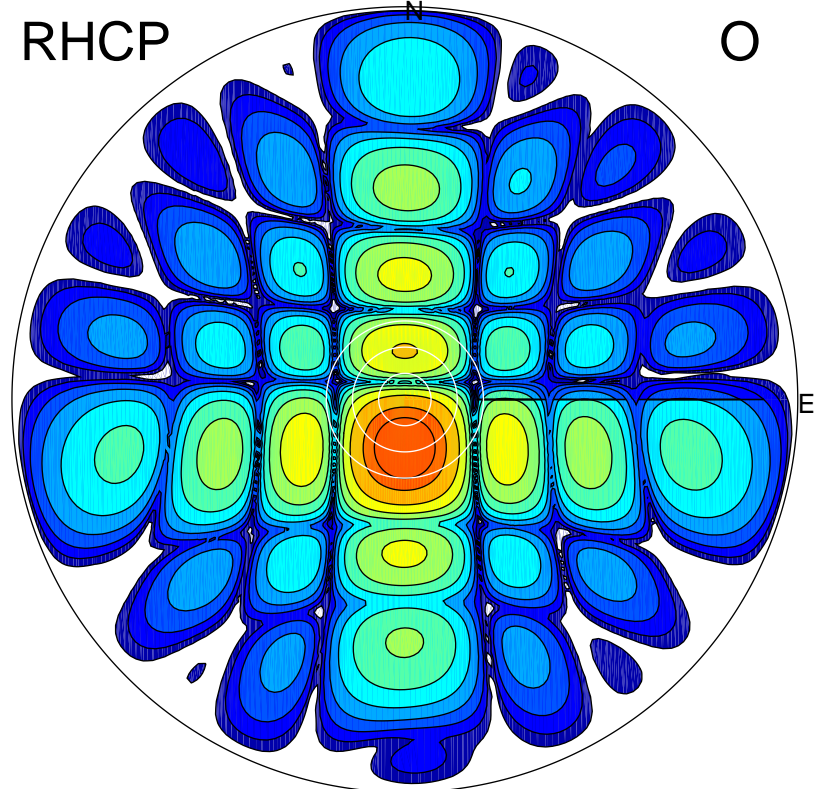
LHCP

X



RHCP

O



ERP 0.4 MW

Peak gain -3.5 dBi at Az 202 Zen 1
RHCP gain 15.0 dBi
N-S peak -3.5 dBi at Zen -0.9
N-S -3 dB beamwidth 12.4 deg.

ERP 157.0 MW

Peak gain 22.4 dBi at Az 180 Zen 11
LHCP gain -15.7 dBi
N-S peak 22.4 dBi at Zen -11.0
N-S -3 dB beamwidth 13.9 deg.