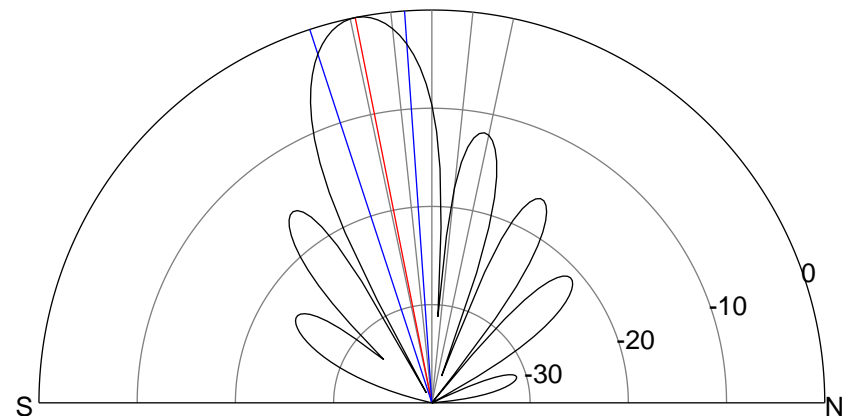
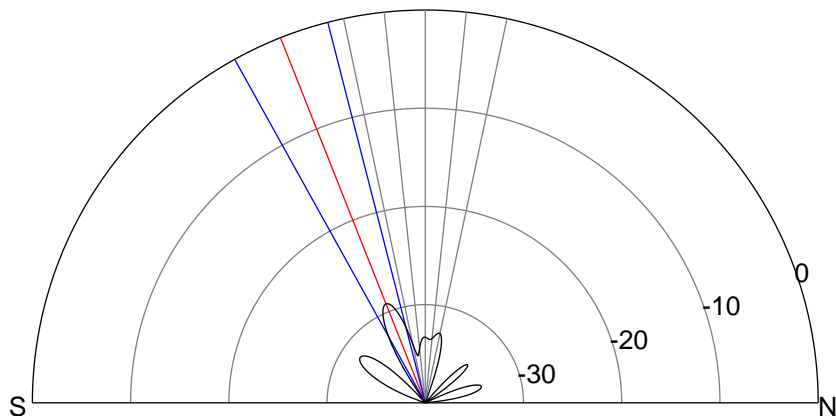
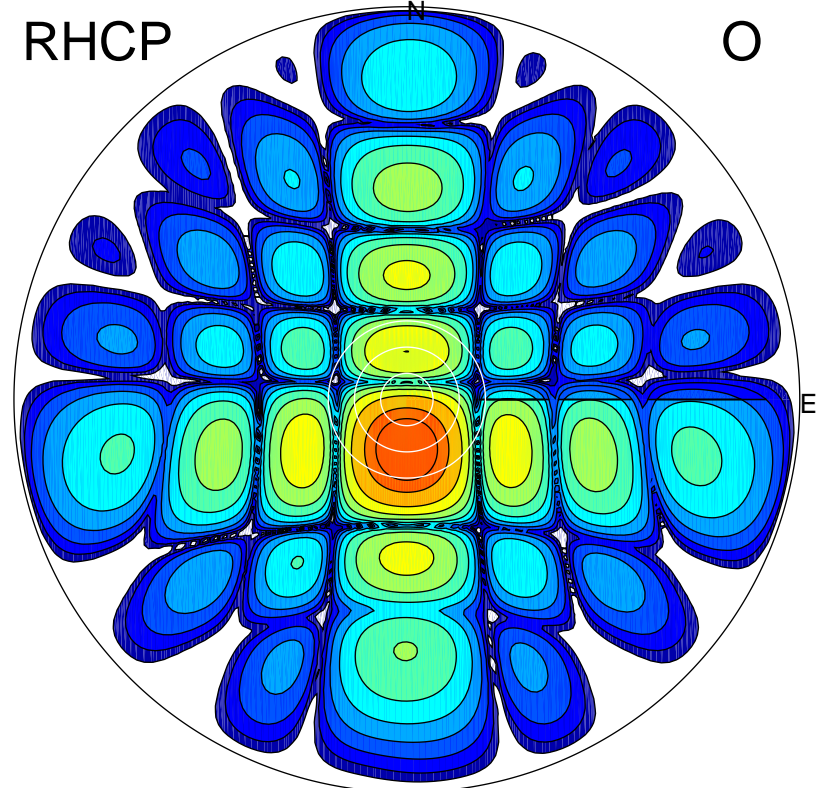
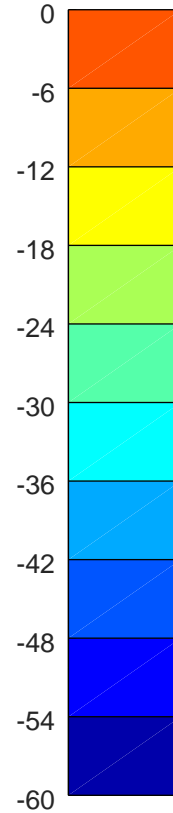
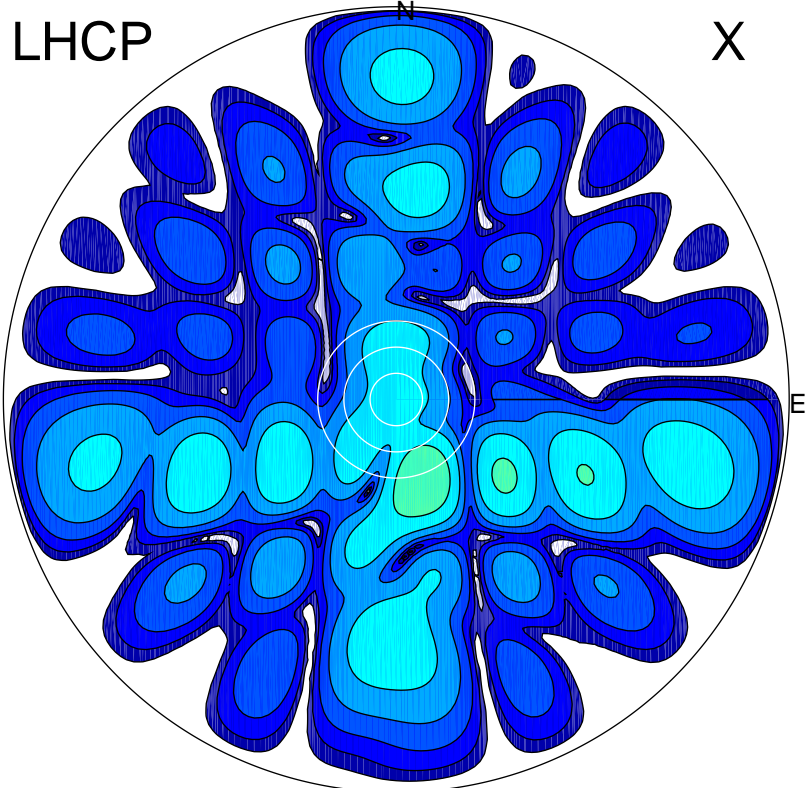


2018-10-16 09:00:16 A2 4.00000000 MHz 907.0 kW



### ERP 0.5 MW

Peak gain -3.0 dBi at Az 162 Zen 20  
RHCP gain 16.7 dBi  
N-S peak -6.8 dBi at Zen -21.6  
N-S -3 dB beamwidth 14.6 deg.

### ERP 155.2 MW

Peak gain 22.3 dBi at Az 181 Zen 11  
LHCP gain -12.4 dBi  
N-S peak 22.3 dBi at Zen -11.2  
N-S -3 dB beamwidth 14.1 deg.