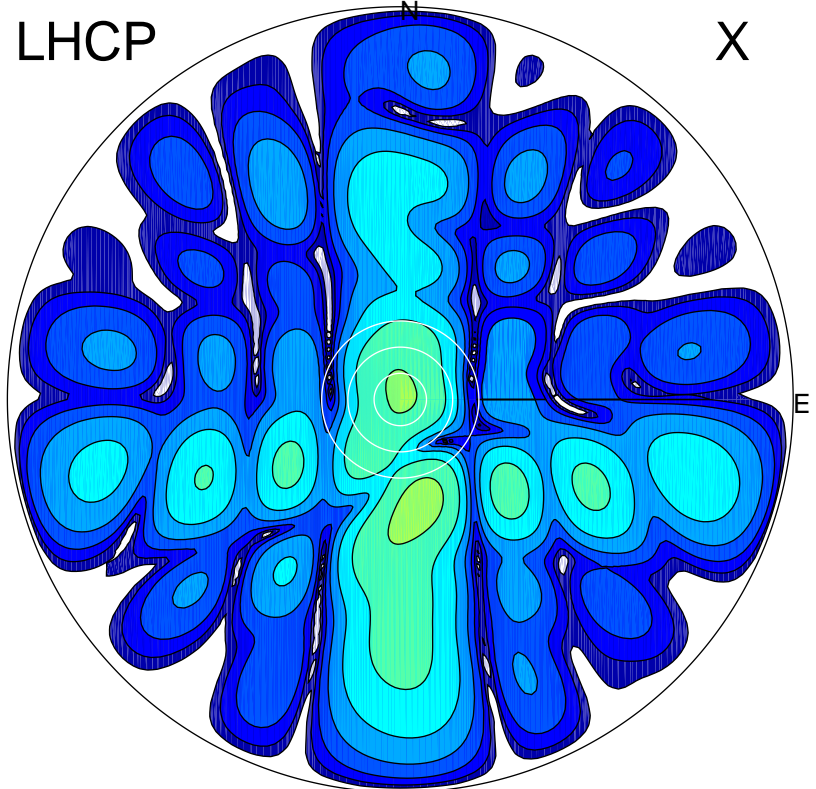


2018-10-10 09:48:05 A2 4.00000000 MHz 882.0 kW

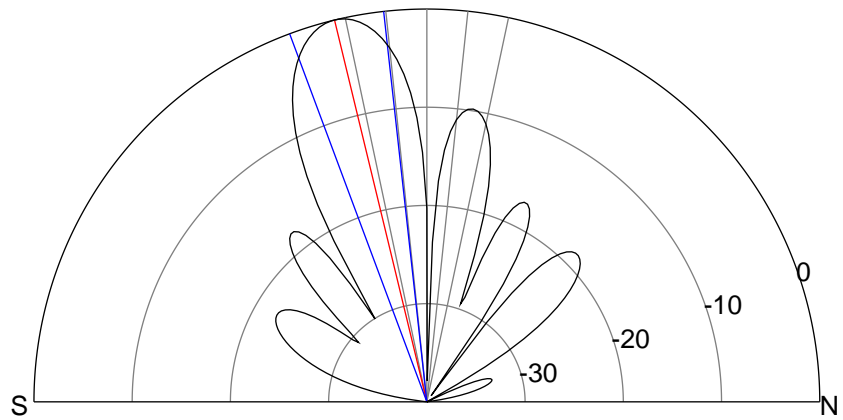
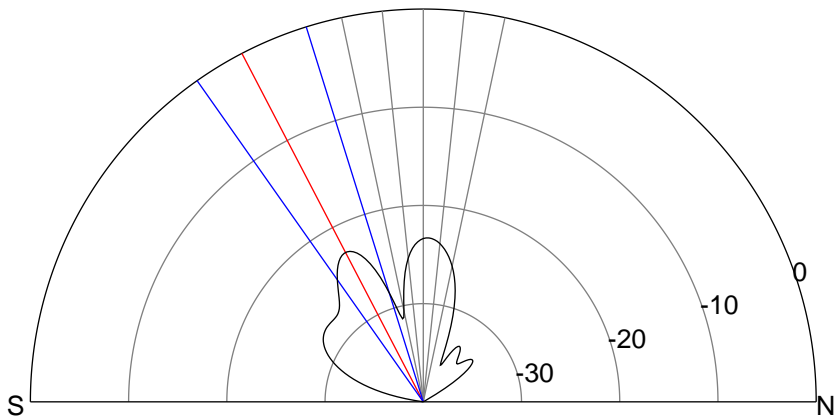
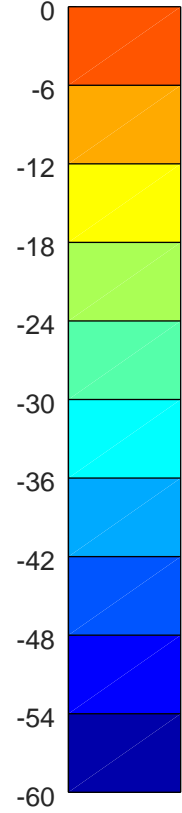
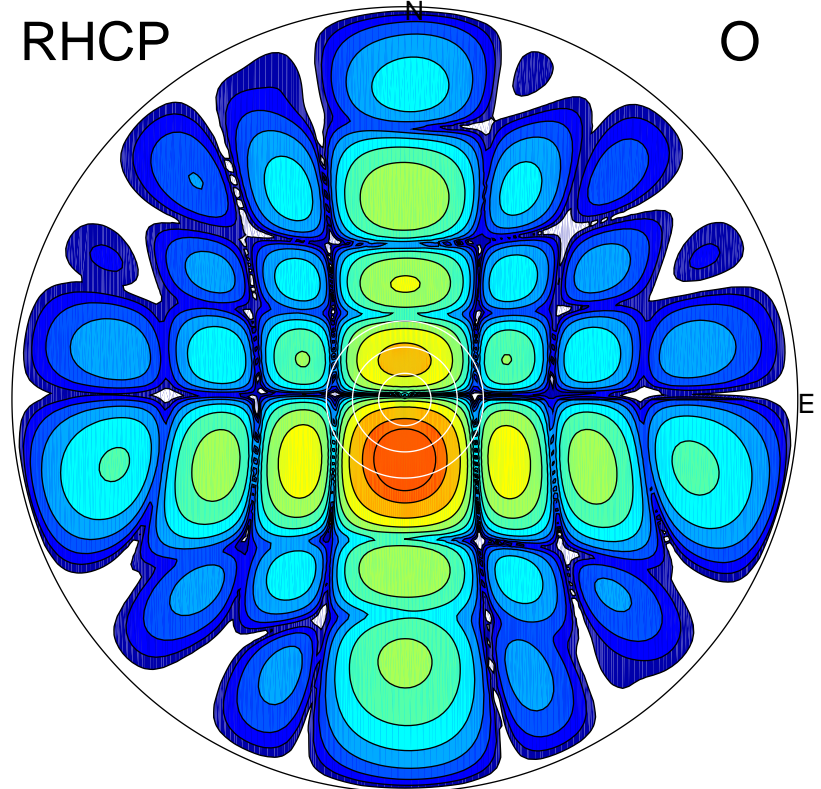
LHCP

X



RHCP

O



### ERP 1.0 MW

Peak gain 0.4 dBi at Az 169 Zen 24  
RHCP gain 15.3 dBi  
N-S peak -0.7 dBi at Zen -27.5  
N-S -3 dB beamwidth 17.8 deg.

### ERP 145.0 MW

Peak gain 22.2 dBi at Az 179 Zen 14  
LHCP gain -9.2 dBi  
N-S peak 22.2 dBi at Zen -13.6  
N-S -3 dB beamwidth 14.1 deg.