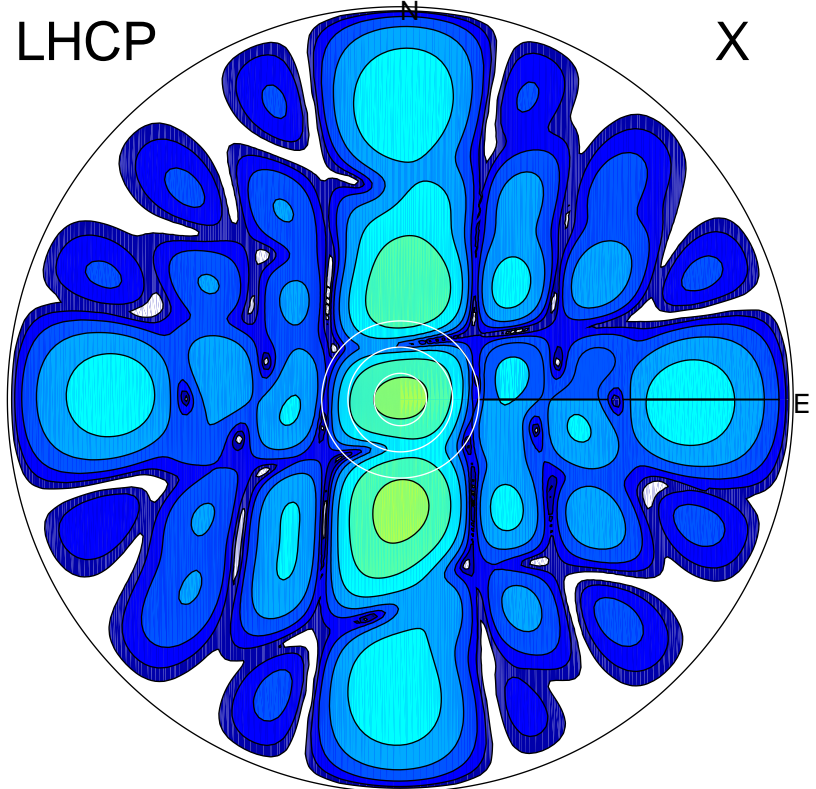


2018-10-10 09:44:05 A2 4.00000000 MHz 884.0 kW

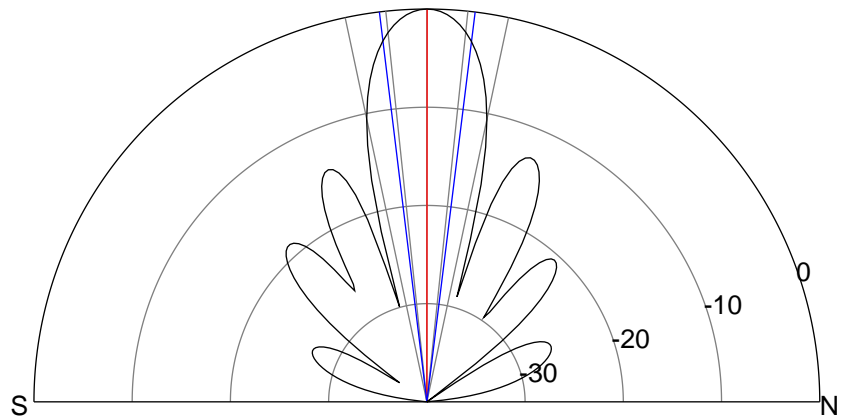
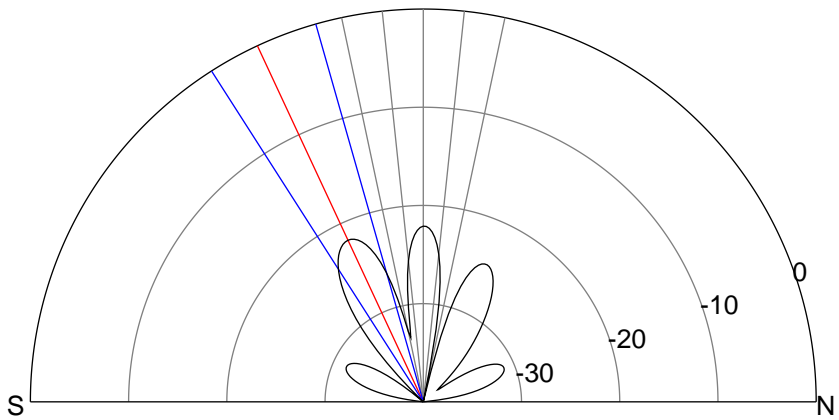
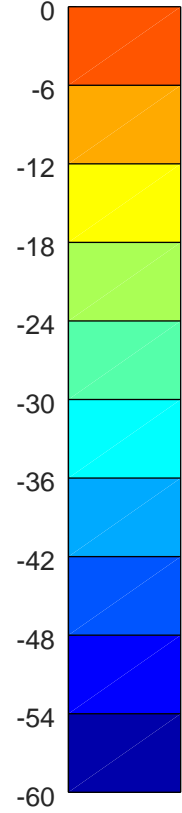
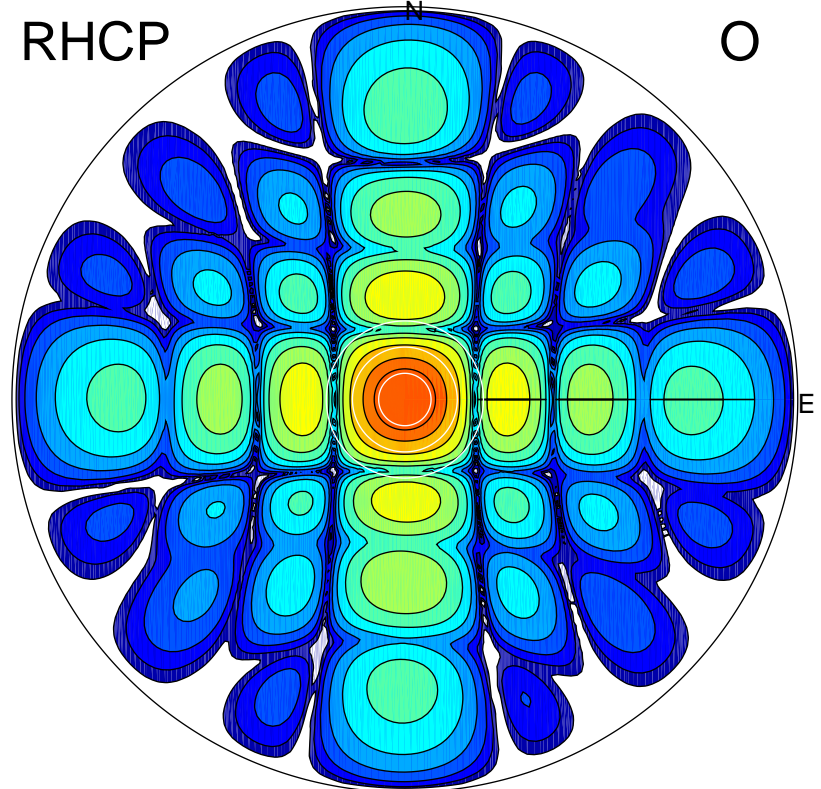
LHCP

X



RHCP

O



ERP 1.0 MW

Peak gain 0.5 dBi at Az 179 Zen 25
RHCP gain 7.5 dBi
N-S peak 0.5 dBi at Zen -25.0
N-S -3 dB beamwidth 16.7 deg.

ERP 151.2 MW

Peak gain 22.3 dBi at Az 35 Zen 0
LHCP gain 0.2 dBi
N-S peak 22.3 dBi at Zen 0.0
N-S -3 dB beamwidth 14.0 deg.