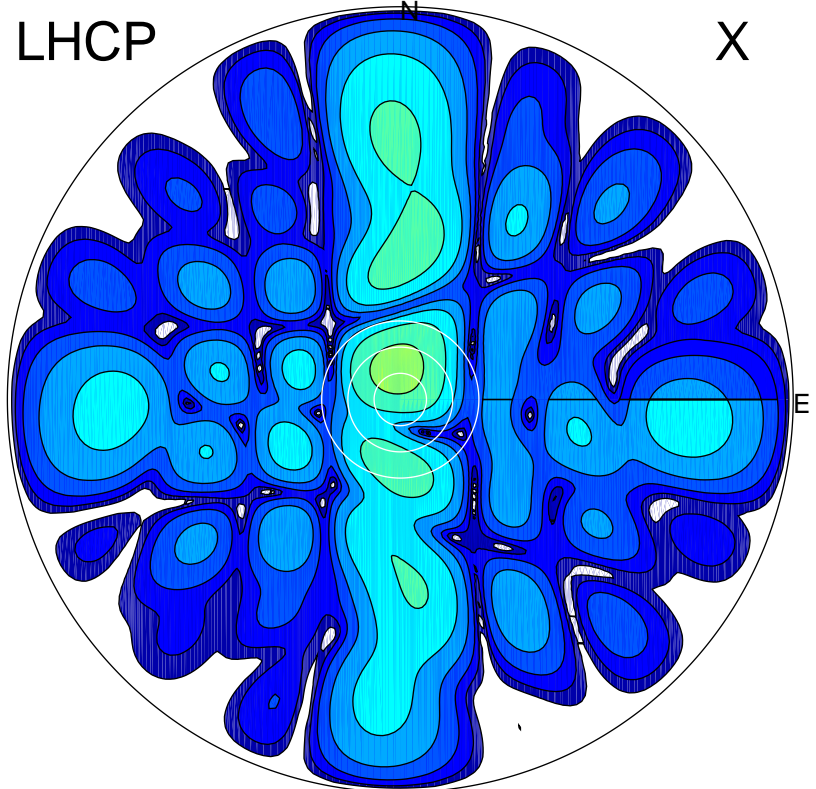


2018-10-10 09:40:00 A2 4.00000000 MHz 794.0 kW

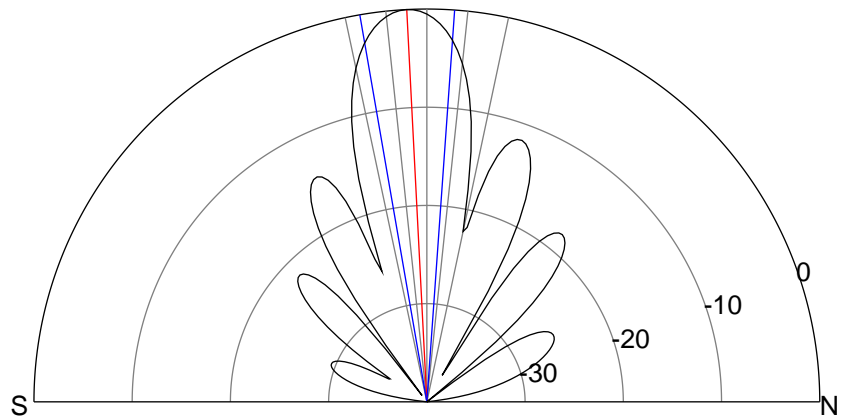
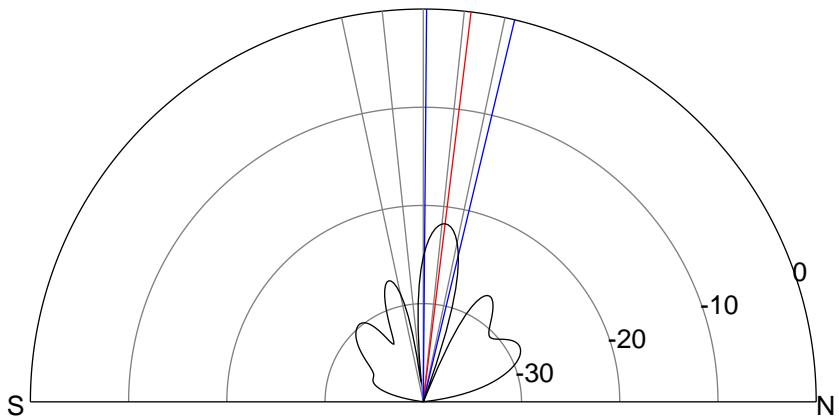
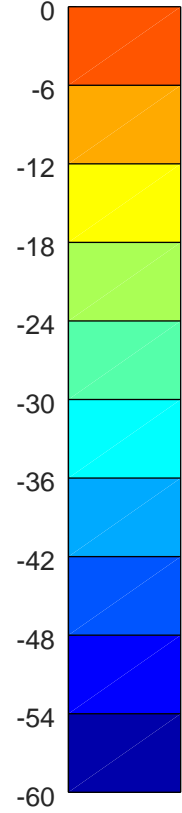
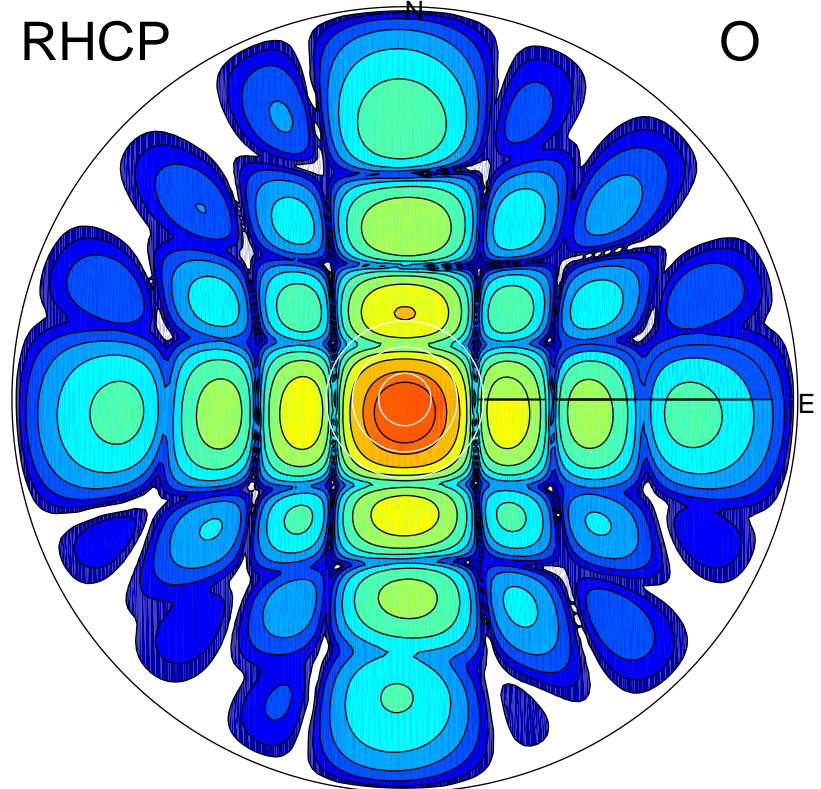
LHCP

X



RHCP

O



ERP 0.9 MW

Peak gain 0.7 dBi at Az 352 Zen 7
RHCP gain 15.5 dBi
N-S peak 0.6 dBi at Zen 7.0
N-S -3 dB beamwidth 13.0 deg.

ERP 136.2 MW

Peak gain 22.3 dBi at Az 183 Zen 3
LHCP gain -7.7 dBi
N-S peak 22.3 dBi at Zen -2.9
N-S -3 dB beamwidth 13.9 deg.