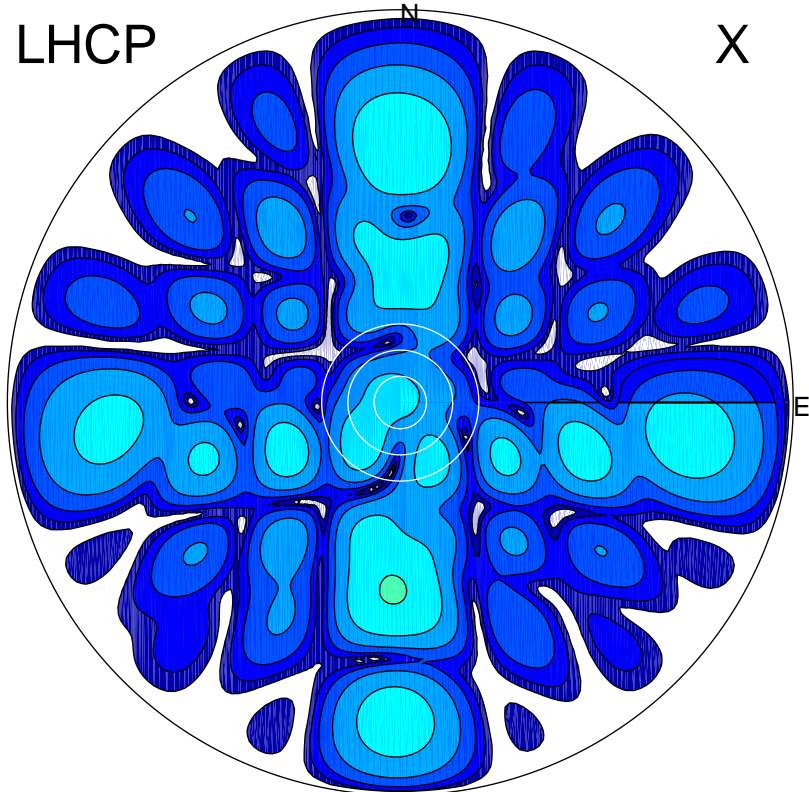


2018-10-10 09:36:05 A2 4.00000000 MHz 882.0 kW

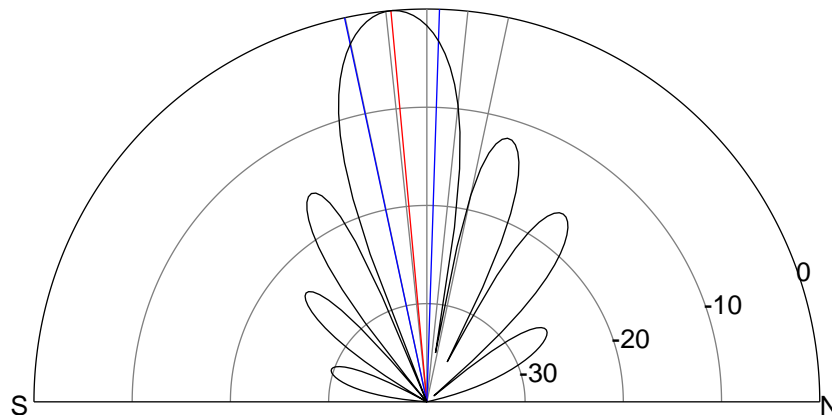
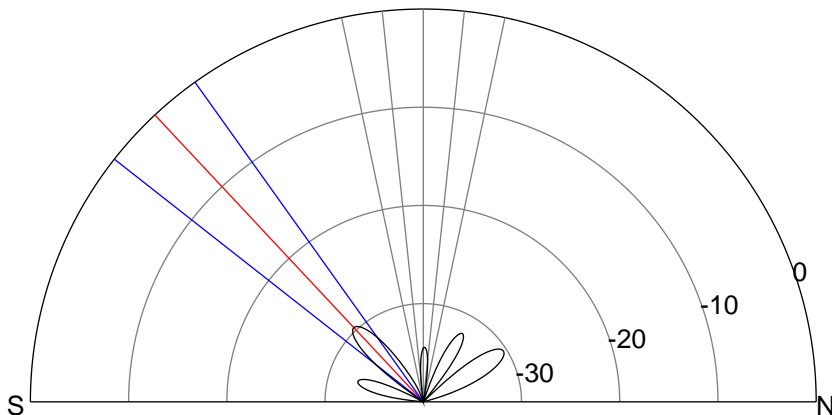
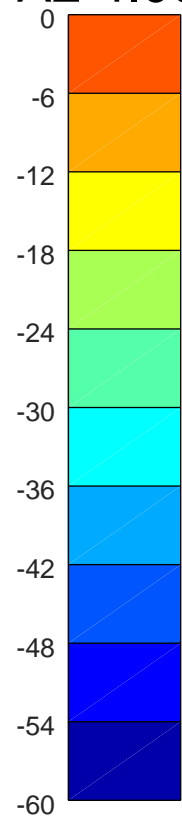
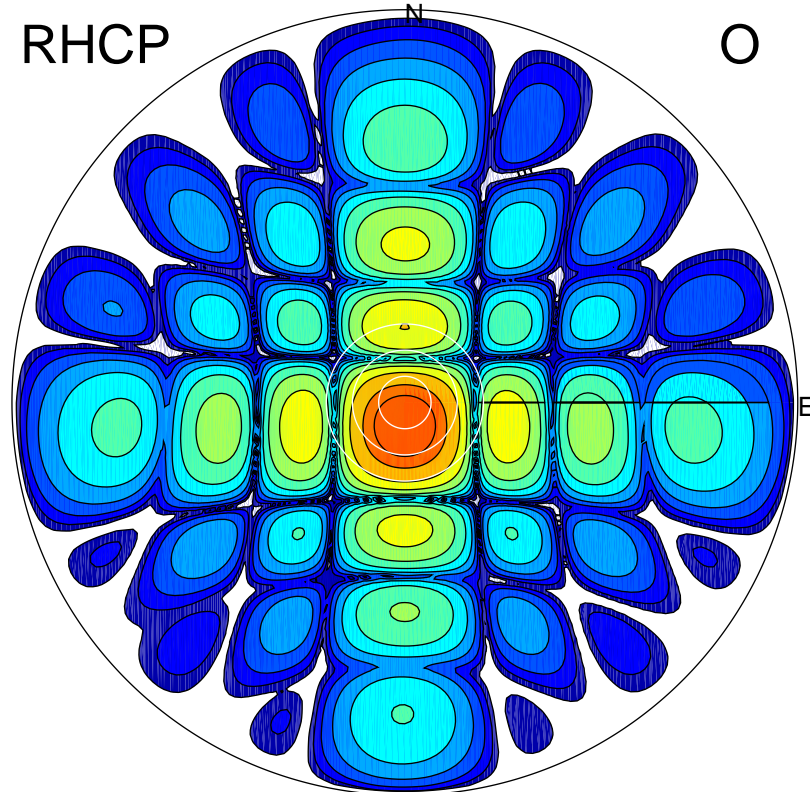
LHCP

X



RHCP

O



ERP 0.2 MW

Peak gain -7.1 dBi at Az 182 Zen 43
RHCP gain -5.0 dBi
N-S peak -7.3 dBi at Zen -43.1
N-S -3 dB beamwidth 16.3 deg.

ERP 152.9 MW

Peak gain 22.4 dBi at Az 178 Zen 5
LHCP gain -14.5 dBi
N-S peak 22.4 dBi at Zen -5.3
N-S -3 dB beamwidth 13.9 deg.