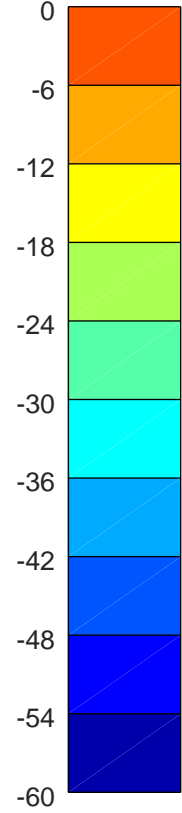
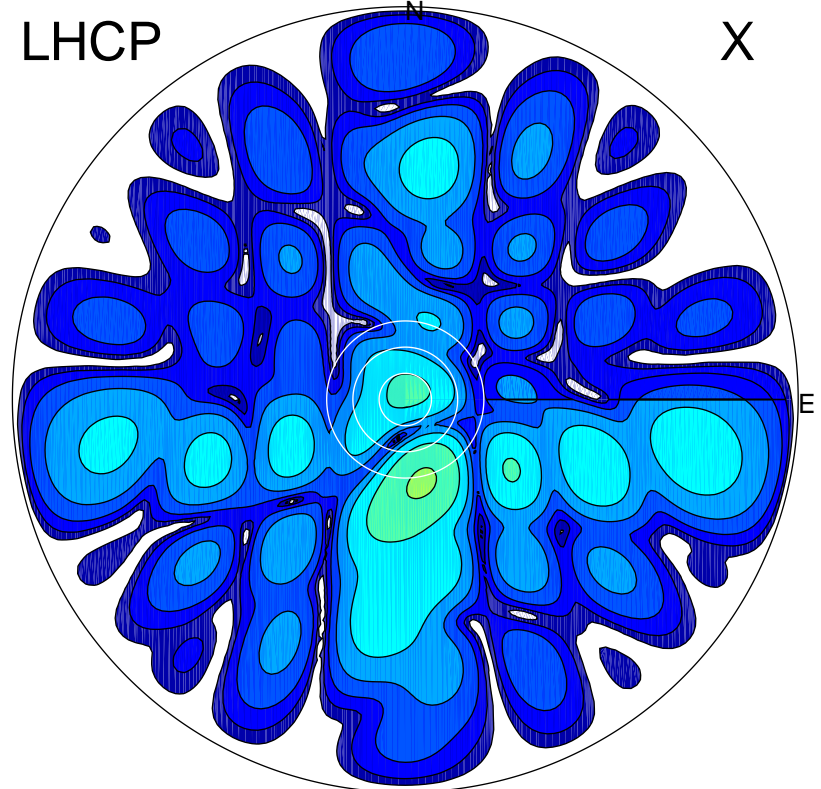


2018-10-10 09:32:05 A2 4.00000000 MHz 878.0 kW

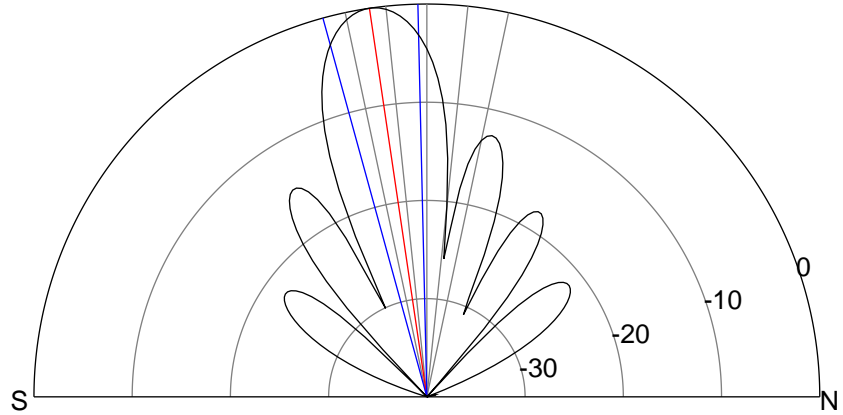
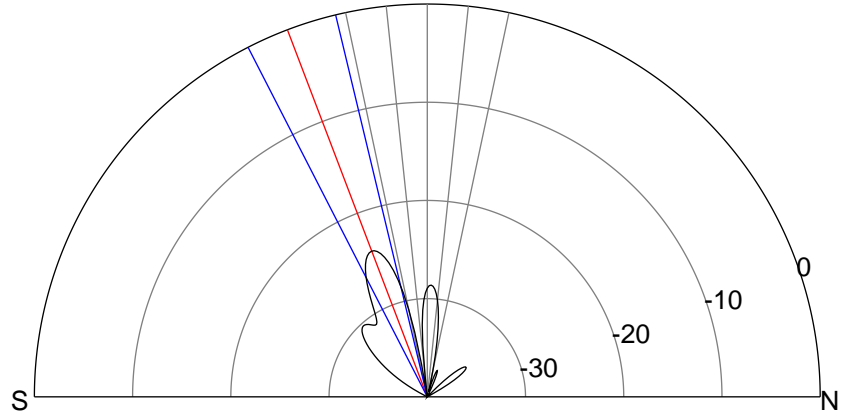
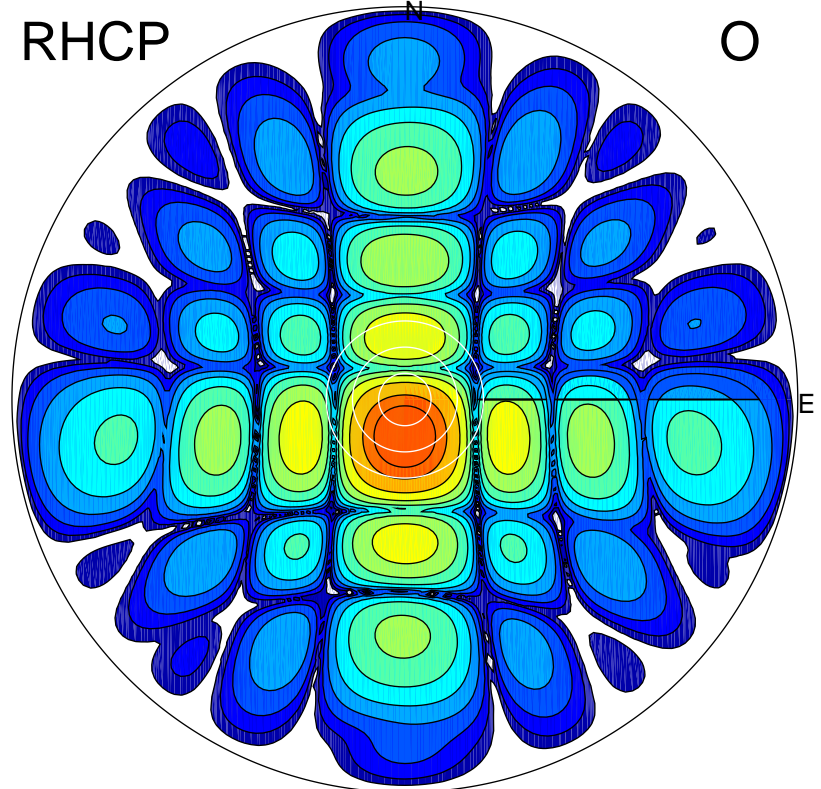
LHCP

X



RHCP

O



ERP 0.7 MW

Peak gain -0.9 dBi at Az 168 Zen 19
RHCP gain 15.0 dBi
N-S peak -1.8 dBi at Zen -20.9
N-S -3 dB beamwidth 13.6 deg.

ERP 150.9 MW

Peak gain 22.4 dBi at Az 181 Zen 8
LHCP gain -28.9 dBi
N-S peak 22.4 dBi at Zen -8.4
N-S -3 dB beamwidth 14.0 deg.