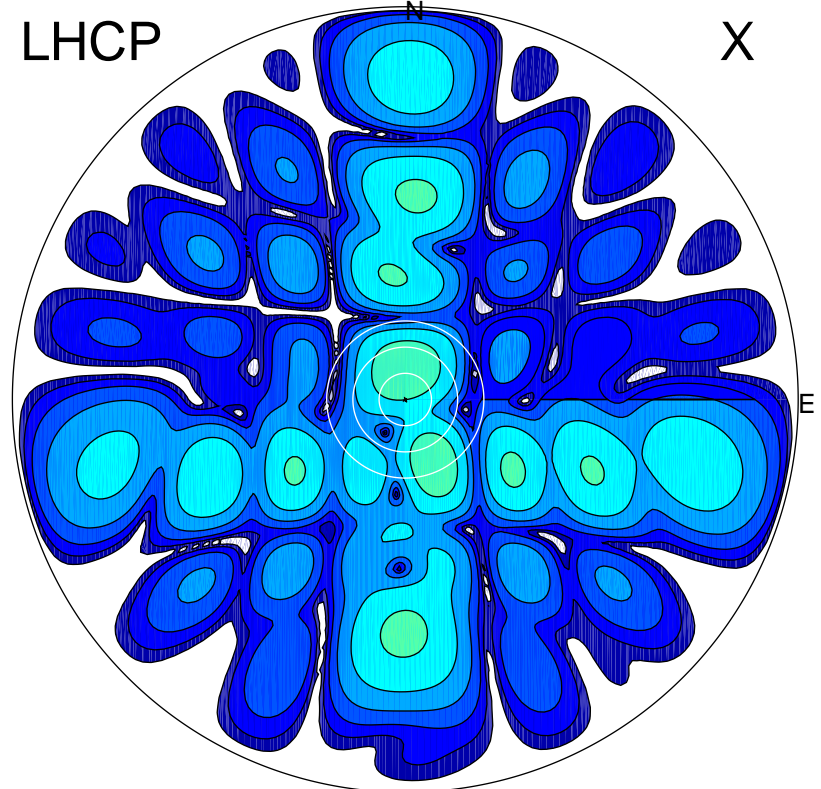


2018-10-09 13:09:00 A2 4.04000000 MHz 887.0 kW

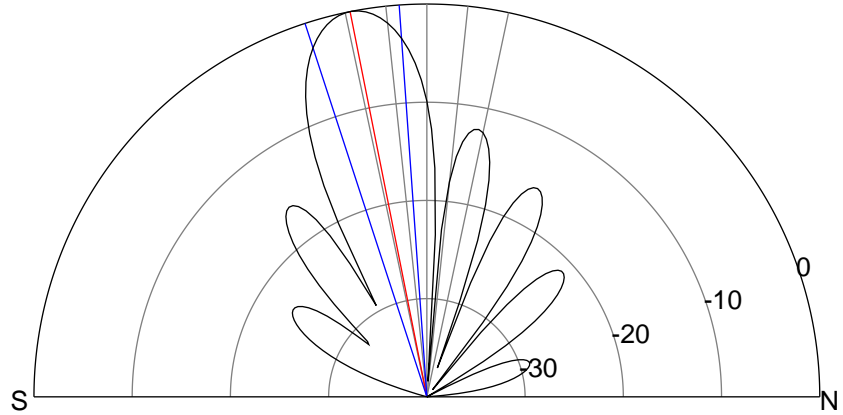
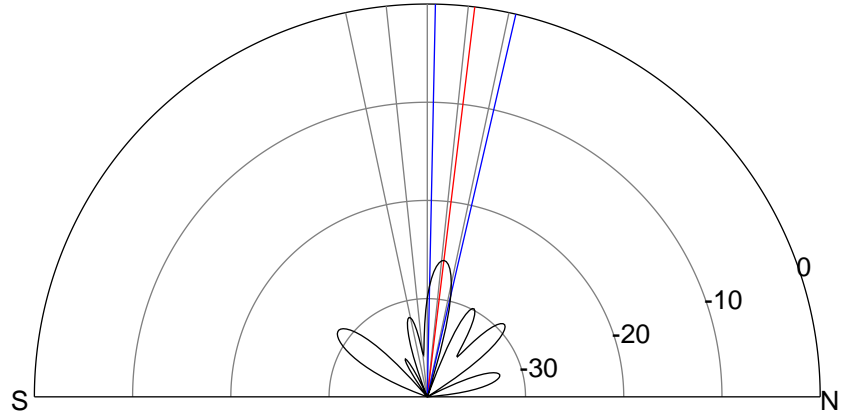
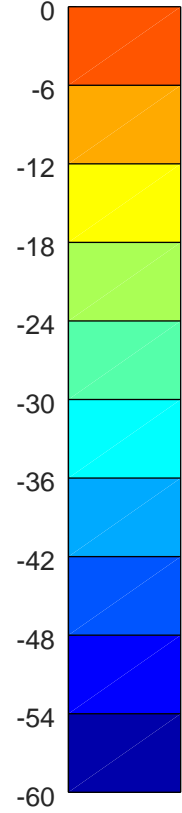
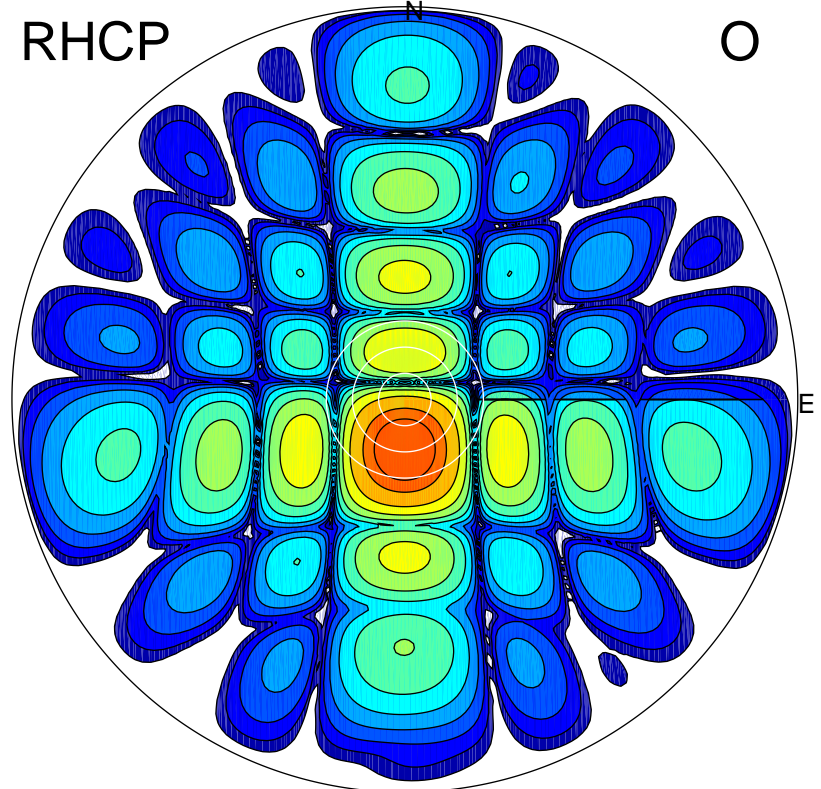
LHCP

X



RHCP

O



### ERP 0.4 MW

Peak gain -3.6 dBi at Az 1 Zen 7  
RHCP gain 7.0 dBi  
N-S peak -3.6 dBi at Zen 6.9  
N-S -3 dB beamwidth 11.8 deg.

### ERP 153.8 MW

Peak gain 22.4 dBi at Az 180 Zen 11  
LHCP gain -9.6 dBi  
N-S peak 22.4 dBi at Zen -11.3  
N-S -3 dB beamwidth 14.0 deg.