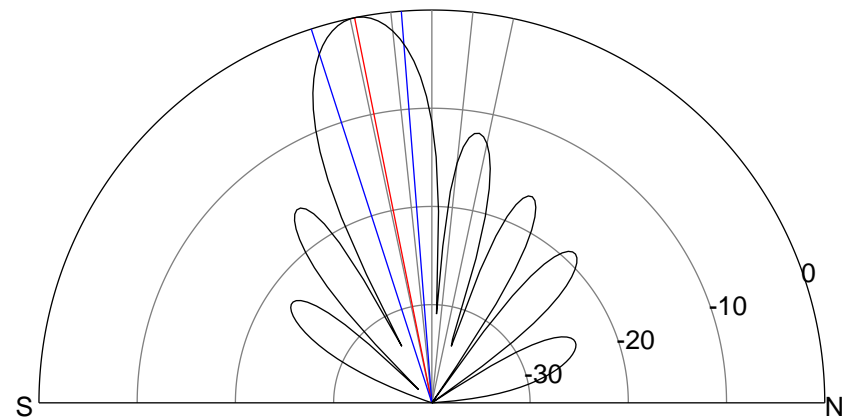
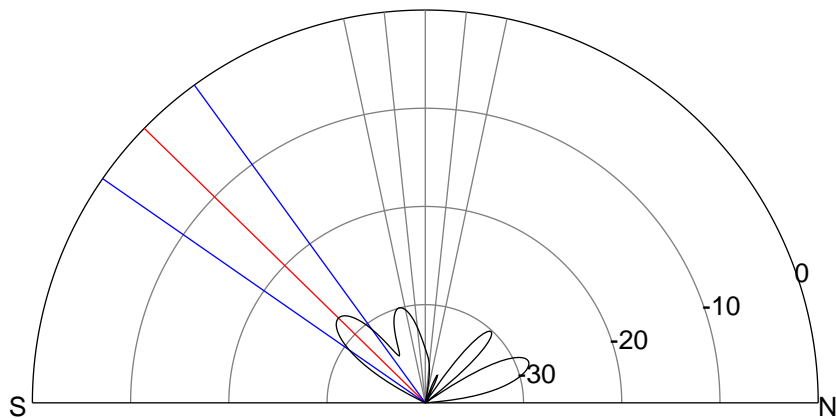
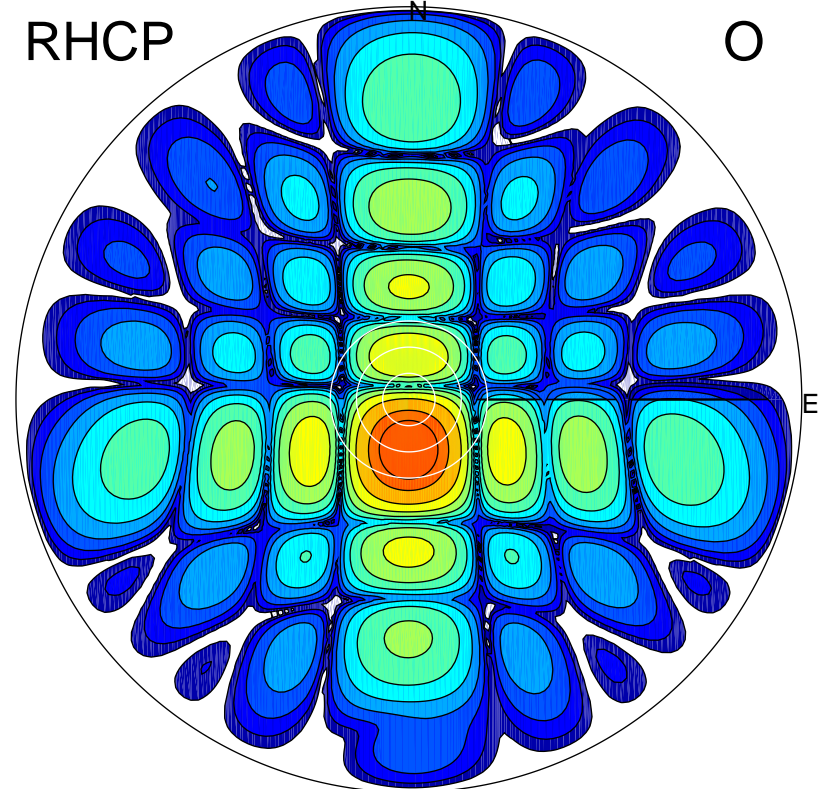
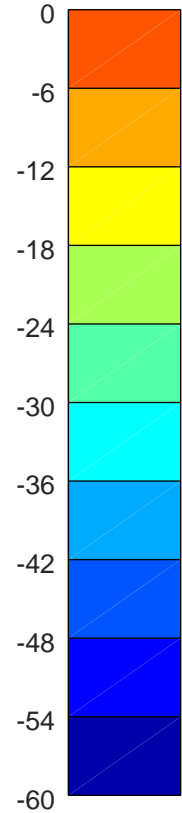
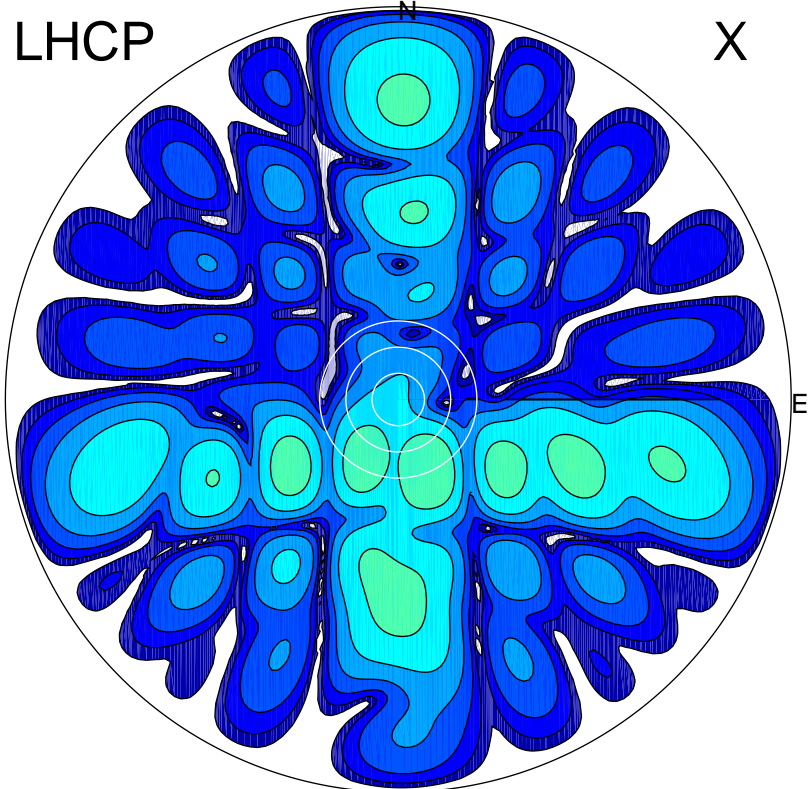


2018-09-21 16:21:41 A2 4.20000000 MHz 897.0 kW



ERP 0.6 MW

Peak gain -1.9 dBi at Az 157 Zen 18
RHCP gain 17.7 dBi
N-S peak -4.9 dBi at Zen -45.7
N-S -3 dB beamwidth 19.2 deg.

ERP 167.4 MW

Peak gain 22.7 dBi at Az 181 Zen 11
LHCP gain -7.9 dBi
N-S peak 22.7 dBi at Zen -11.3
N-S -3 dB beamwidth 13.4 deg.