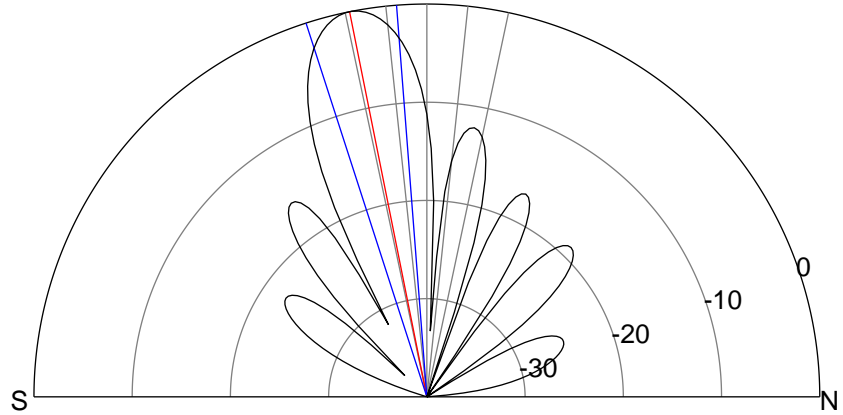
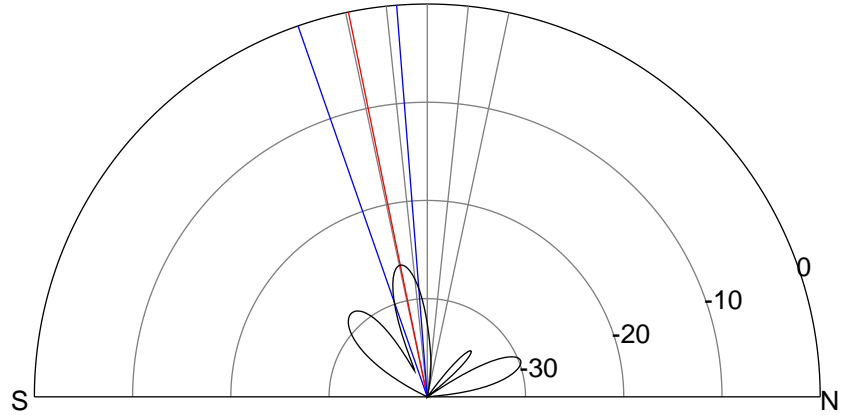
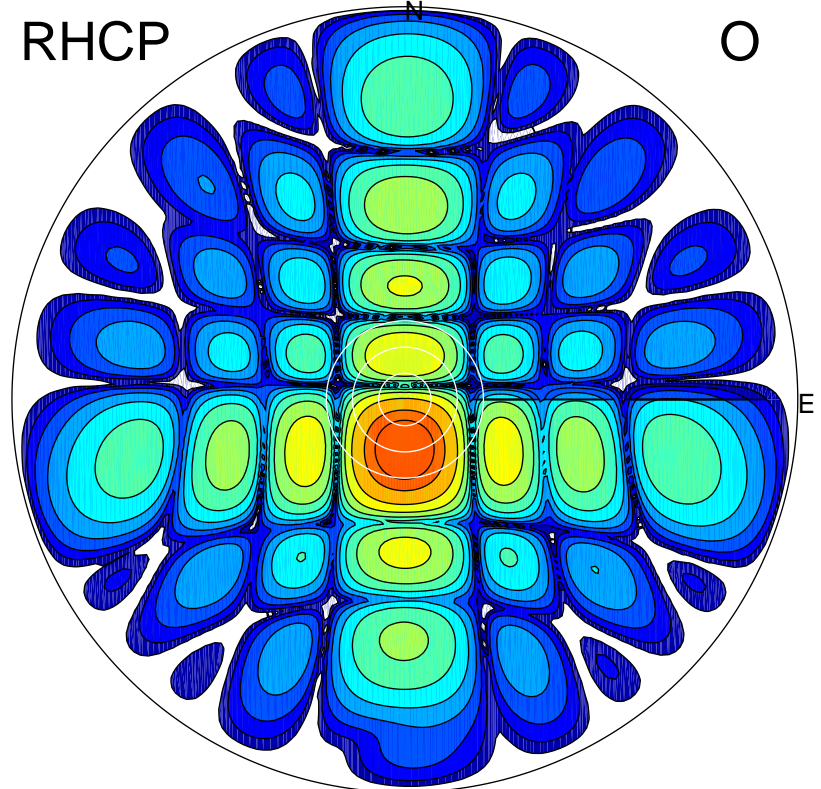
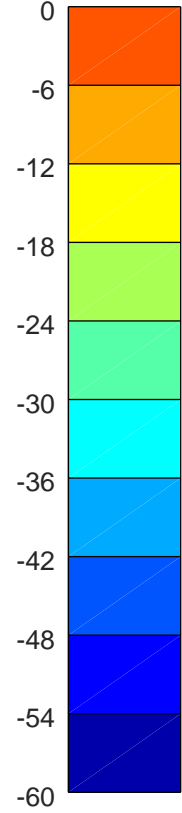
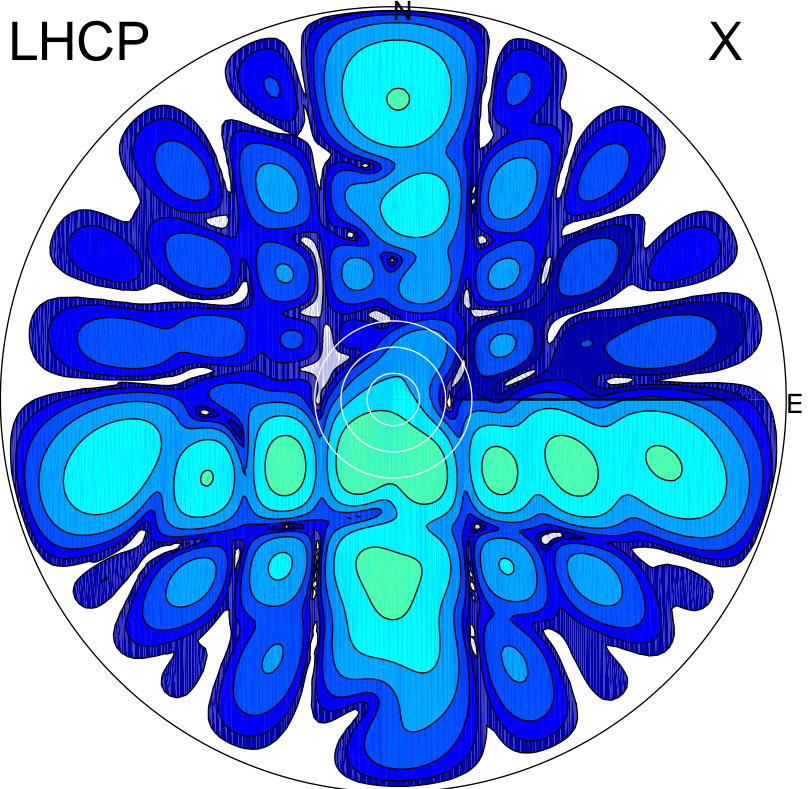


2018-09-21 16:20:41 A2 4.18000000 MHz 898.0 kW



ERP 0.6 MW

Peak gain -1.7 dBi at Az 207 Zen 15
RHCP gain 19.5 dBi
N-S peak -3.6 dBi at Zen -11.6
N-S -3 dB beamwidth 14.7 deg.

ERP 166.2 MW

Peak gain 22.7 dBi at Az 180 Zen 11
LHCP gain -3.7 dBi
N-S peak 22.7 dBi at Zen -11.3
N-S -3 dB beamwidth 13.5 deg.