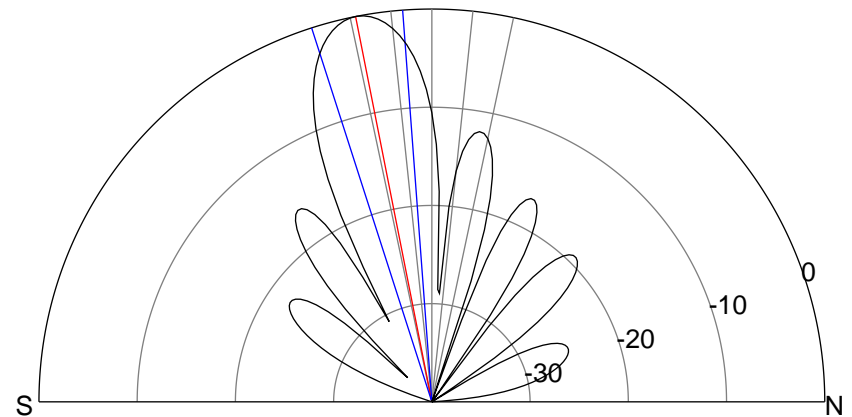
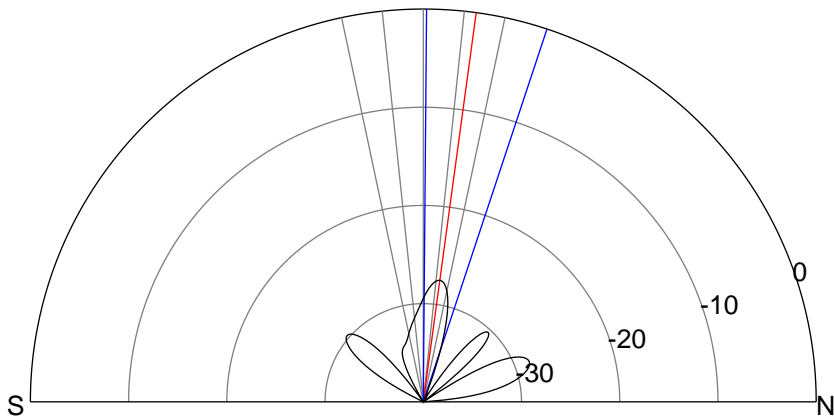
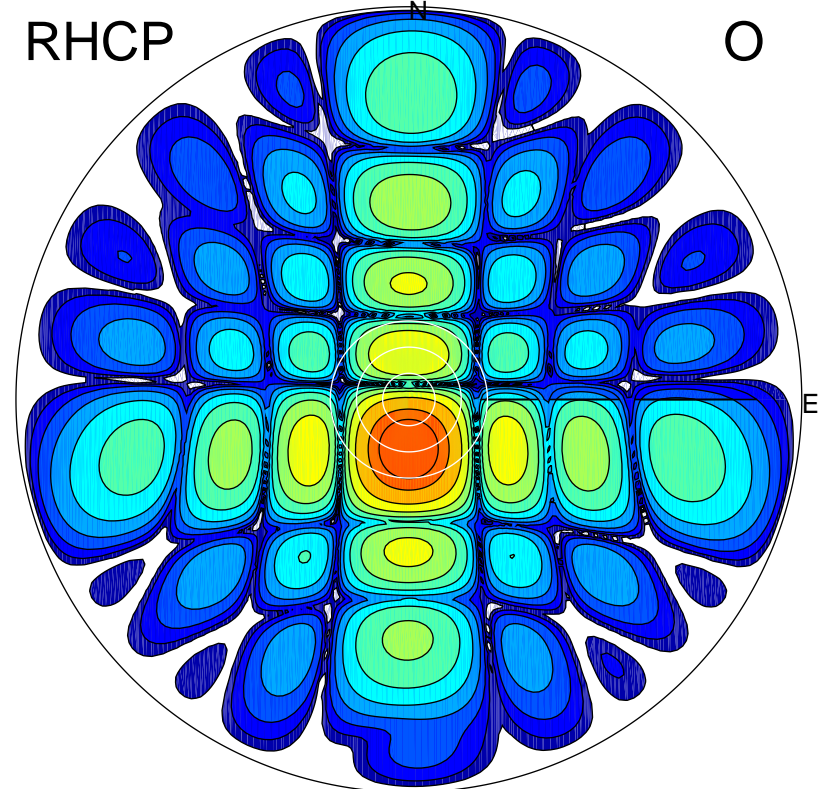
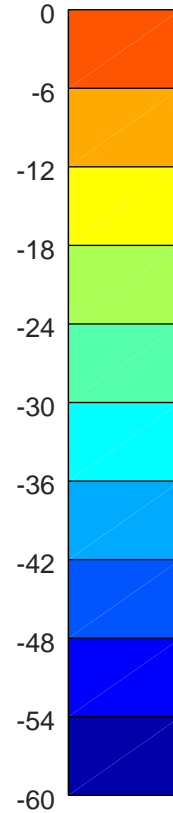
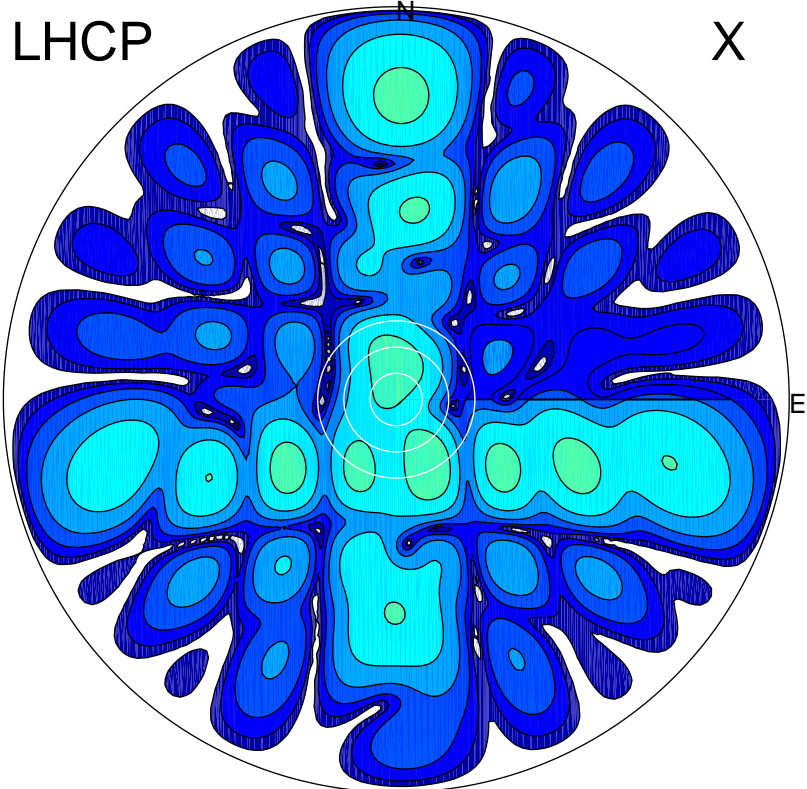


2018-09-21 16:19:41 A2 4.16000000 MHz 892.0 kW



### ERP 0.4 MW

Peak gain -3.1 dBi at Az 155 Zen 17  
RHCP gain 18.2 dBi  
N-S peak -4.9 dBi at Zen 7.7  
N-S -3 dB beamwidth 17.9 deg.

### ERP 163.8 MW

Peak gain 22.6 dBi at Az 181 Zen 11  
LHCP gain -10.3 dBi  
N-S peak 22.6 dBi at Zen -11.2  
N-S -3 dB beamwidth 13.6 deg.